

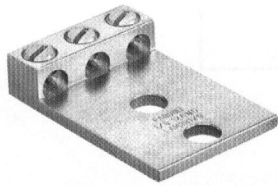
# PANDUIT® Aluminum Three Barrel Connectors (Types LAM3B, LAM3SB and LAM3D)

## Aluminum Connectors

## For Use With Aluminum Or Copper Cables For 600V Applications

### Horizontal Configuration Three Barrel Type LAM3B

#### Two-Hole Tongue



- ◆
- ◆
- ◆
- ◆
- ◆
- ◆

Part Number	Conductor Size Range	Bolt Hole Size	Hex Key Size	Dimensions (In.)						Fig. No.	Std. Pkg. Qty.
				A	W	G	S	C	T		
LAM3B2-14-6	#14 - #2	1/4"	**	2.19	1.59	.32	.87	.49	.09	1	6
LAM3B1/0-38-6	#12 - 1/0	3/8"	**	2.94	1.94	.32	1.00	.84	.19	1	6
LAM3B3/0-38-3	#6 - 3/0	3/8"	**	3.87	2.81	.62	1.75	.62	.19	1	3
LAM3B250-12-1	#6 - 250	1/2"	1/4"	4.37	2.81	.62	1.75	.62	.22	1	1
LAM3B350-12-1	#6 - 350	1/2"	5/16"	4.50	3.00	.62	1.75	.62	.25	1	1
LAM3B600-12-1	#2 - 600	1/2"	3/8"	4.62	3.75	.56	1.75	.69	.31	1	1
LAM3LB800-12-1	350 - 800	1/2"	9/16"	6.19	4.25	.62	1.75	1.07	.38	2	1
LAM3LB1000-12-1	500 - 1000	1/2"	9/16"	6.19	4.75	.62	1.75	1.07	.44	2	1

The use of PANDUIT oxide inhibiting joint compound (CMP-100) is recommended. Refer to page 34.

◆ NEMA hole sizes and spacing.

\*\* Uses slotted brand set screw.

Fig. 1

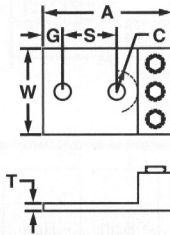
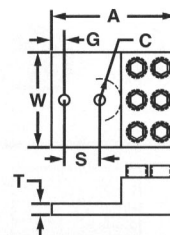
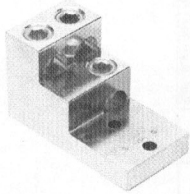


Fig. 2



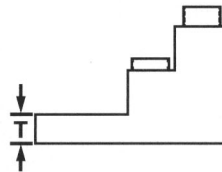
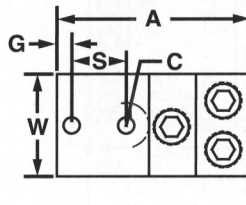
### Vertical Configuration Three Barrel Type LAM3SB

#### Two-Hole Tongue



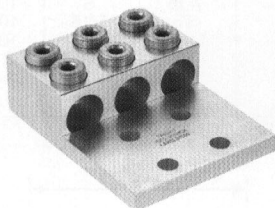
Part Number	Conductor Size Range	Bolt Hole Size	Hex Key Size	Dimensions (In.)						Std. Pkg. Qty.
				A	W	G	S	C	T	
LAM3SB600-38-1	#2 - 600	3/8"	1/2"	4.91	2.47	.37	1.38	.60	.75	1
LAM3SB750-38-1	#3/0 - 750	3/8"	3/8"	4.91	2.62	.37	1.38	.60	.75	1

The use of PANDUIT oxide inhibiting joint compound (CMP-100) is recommended. Refer to page 34.



### Three Barrel Type LAM3D

#### Four-Hole Tongue



- ◆
- ◆
- ◆
- ◆
- ◆
- ◆
- ◆

Part Number	Conductor Size Range	Bolt Hole Size	Hex Key Size	Dimensions (In.)						Fig. No.	Std. Pkg. Qty.
				A	W	G	S	C	T		
LAM3D2-14-6	#14 - #2	1/4"	**	2.19	1.59	.32	.87	.49	.09	1	6
LAM3D1/0-38-6	#12 - 1/0	3/8"	**	2.94	1.94	.32	1.00	.84	.19	1	6
LAM3D3/0-38-3	#6 - 3/0	3/8"	**	3.87	2.81	.62	1.75	.62	.19	1	3
LAM3D250-12-1	#6 - 250	1/2"	1/4"	4.37	2.81	.62	1.75	.62	.22	1	1
LAM3D350-12-1	#6 - 350	1/2"	5/16"	4.50	3.00	.62	1.75	.62	.25	1	1
LAM3D600-12-1	#2 - 600	1/2"	3/8"	4.62	3.75	.56	1.75	.69	.31	1	1
LAM3LD800-12-1	350 - 800	1/2"	9/16"	6.19	4.25	.62	1.75	1.07	.38	2	1
LAM3LD1000-12-1	500 - 1000	1/2"	9/16"	6.19	4.75	.62	1.75	1.07	.44	2	1

The use of PANDUIT oxide inhibiting joint compound (CMP-100) is recommended. Refer to page 34.

◆ NEMA hole sizes and spacing.

\*\* Uses slotted brand set screw

Fig. 1

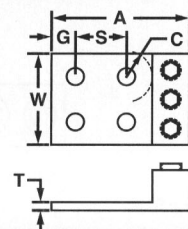


Fig. 2

