

PLEASE CHECK WWW.MOLEX.COM FOR LATEST PART INFORMATION

Part Number: [1301490024](#)
Status: **Active**
Overview: [Heavy-Duty Industrial Wiring Devices](#)
Description: Safeway Flanged Inlet, 3 Pole/3 Wire, Non-NEMA Locking, 125V/250V

Documents:

[Brochure \(PDF\)](#) [RoHS Certificate of Compliance \(PDF\)](#)

Agency Certification

CSA LR6837
 UL E10176

General

Product Family [Wiring Devices](#)
 Series [130149](#)
 IP Rating N/A
 NEMA Configuration [Non-NEMA Locking](#)
 Overview [Heavy-Duty Industrial Wiring Devices](#)
 Product Name [Safeway](#)
 Receptacle Type [Single](#)
 Specialty [N/A](#)
 Taxonomy [Wiring Devices](#)
 Type [Inlet](#)
 UPC [78678802605](#)

Physical

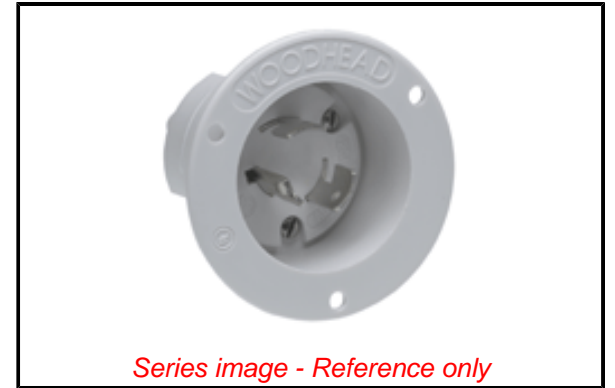
Flange Yes
 Flip Lid No
 Gender Male
 Length N/A
 Locking Blade Yes
 Poles 3-pole/3-wire

Electrical

Cord Type N/A
 Current - Maximum per Contact 20.0A
 GFCI No
 Lighted Connector No
 Voltage - Maximum 125V / 250V

Material Info

Engineering Number 2608MB



EU ELV

Not Reviewed

EU RoHS

Not Reviewed

REACH SVHC

Not Reviewed

Halogen-Free

Status

Not Reviewed

For more information, please visit [Contact US](#)

China ROHS

Not Reviewed

ELV

Not Reviewed

RoHS Phthalates

Not Reviewed

Search Parts in this Series

[130149 Series](#)

PLEASE CHECK WWW.MOLEX.COM FOR LATEST PART INFORMATION