



600-1-9SD16
(M55302/6-01)



600-1-9P
(M55302/4-01)

9 CONTACTS



600-1-17SD16
(M55302/6-02)



600-1-17P
(M55302/4-02)

17 CONTACTS



600-1-25SD16
(M55302/6-03)



600-1-25P
(M55302/4-03)

25 CONTACTS



600-1-41SD16
(M55302/6-05)



600-1-41P
(M55302/4-05)

41 CONTACTS

SERIES 600-1

MICRO-MINIATURE

RIGHT ANGLE MOUNTING

PRINTED CIRCUIT

PIN & SOCKET

CONNECTORS

FLOW SOLDER

TERMINATIONS

MEETS

MIL-C-55302/4 (PLUGS)

MIL-C-55302/6 (RECEPTACLES)

.100" (2.54MM) CONTACT SPACING

2 ROWS OFFSET .050 (1.27MM)

.100" (2.54MM) ROW SPACING

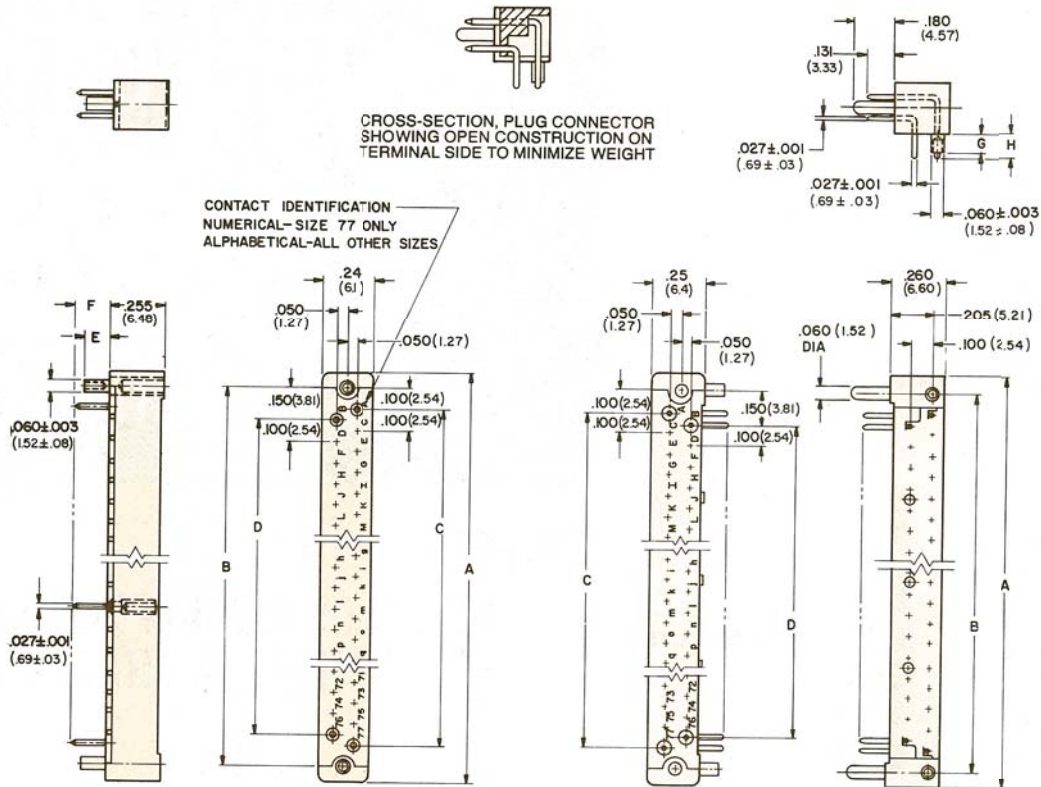
9, 17, 25, 33, 41, 61 & 77 CONTACTS

SERIES 600-1 PRINTED CIRCUIT CONNECTORS

9, 17, 25, 33, 41, 61 & 77 CONTACTS

.100" (2.54MM) CONTACT SPACING
2 ROWS OFFSET .050 (1.27MM)
.100" (2.54MM) ROW SPACING

MEETS MIL-C-55302/4 & /6



RECEPTACLE
MEETS MIL-C-55302/6

PART NO.	E	F
600-1-() SD16	.128 (3.25)	.164 (4.17)
600-1-() SD11	.090 (2.29)	.110 (2.79)
600-1-() SD16-1	.090 (2.29)	.164 (4.17)
600-1-() SD11-1	.128 (3.25)	.110 (2.79)

M55302/6-01 THRU -06

PLUG
MEETS MIL-C-55302/4

PART NO.	G	H
600-1-() P	.090 (2.29)	.110 (2.79)
600-1-() P1	.128 (3.25)	.140 (3.56)

M55302/4-01 THRU -06

↑ INSERT NO. OF CONTACTS
(9, 17, 25, 33, 41, 61 or 77)

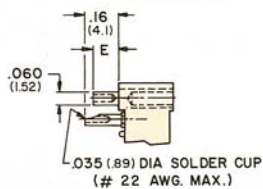
↑ INSERT NO. OF CONTACTS
(9, 17, 25, 33, 41, 61 or 77)

NO. OF CONTACTS	DIMENSIONS			
	A	B	C	D
9	.75 (19.1)	.600 (15.24)	.400 (10.16)	.300 (7.62)
17	1.15 (29.2)	1.000 (25.40)	.800 (20.32)	.700 (17.78)
25	1.55 (39.4)	1.400 (35.56)	1.200 (30.48)	1.100 (27.94)
33	1.95 (49.5)	1.800 (45.72)	1.600 (40.64)	1.500 (38.10)
41	2.35 (59.7)	2.200 (55.88)	2.000 (50.80)	1.900 (48.26)
61	3.35 (85.1)	3.200 (81.28)	3.300 (76.20)	2.900 (73.66)
77	4.15 (105.4)	4.000 (101.60)	3.800 (96.52)	3.700 (93.98)

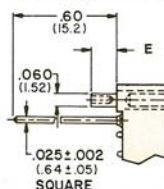
DIMENSIONS IN PARENTHESES ARE IN MILLIMETERS

ALTERNATE TERMINALS ON RECEPTACLE

SOLDER CUP



WIRE-WRAPPING



PART NO.	E
600-1-() SC	.090 (2.29)
600-1-() SC-1	.128 (3.25)

PART NO.	E
600-1-() SW	.128 (3.25)
600-1-() SW-1	.090 (2.29)