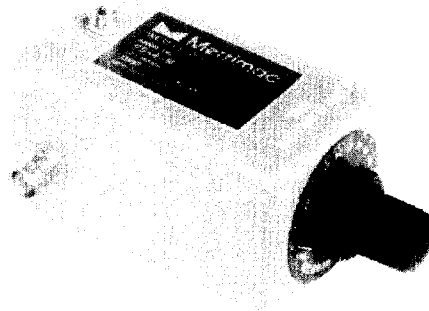
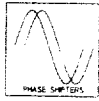


PS-4 Series

10 to 100 MHz / 0° to 180° Continuous Plus 0°/180° Switch / 10% Bandwidth / BNC Connectors



PRINCIPAL SPECIFICATIONS

Model Number	Center Frequency, f_0 , MHz	Usable Bandwidth, MHz
PS-4-30	30	28.5 - 31.5
PS-4-***B	10 to 100	$f_0 \pm 5\%$

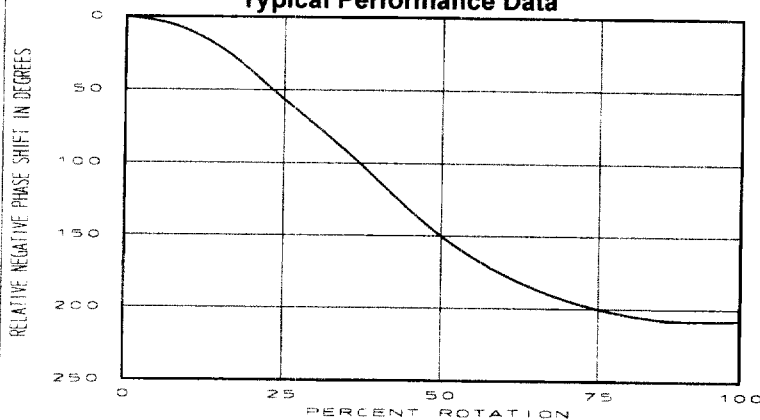
For complete Model Number replace *** with desired Center Frequency, f_0 in MHz.

GENERAL SPECIFICATIONS

Phase Shift Range: 360° min. @ f_0
 Insertion Loss: 1.75 dB max.
 Impedance: 50 Ω nom.
 VSWR: 1.75:1 max.
 CW Power: 1 Watt max.
 Drive: Knob/Lock plus Toggle Switch

Drive Rotation for maximum phase shift: Half-Turn nom.
 Connectors: BNC Female
 Weight: 10 oz. (285 g)
 Operating Temp: -55° to +85°C

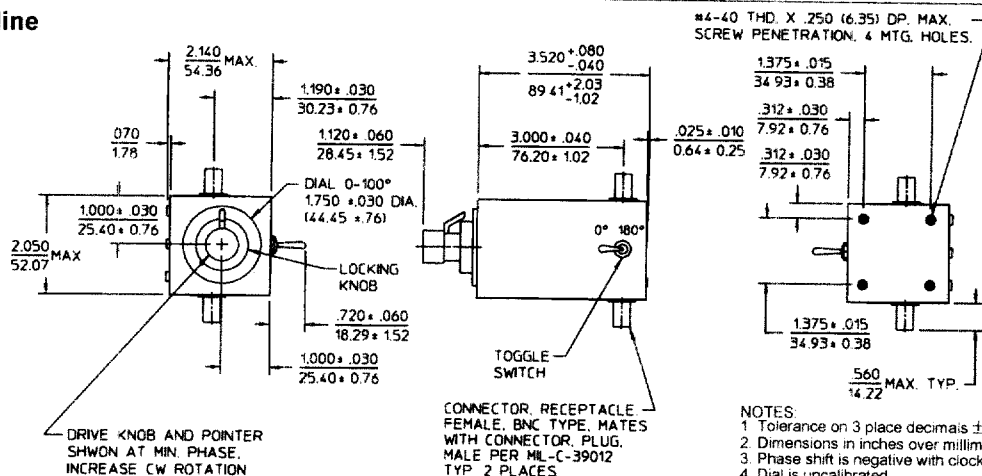
Typical Performance Data



General Notes:

- The PS-4 series mechanically adjusts phase continuously from 0° to 180°. A mechanical switch inserts an additional 180° switched shift for a total of range of 0° to 360°. A lock is included to avoid unintentionally changing the selected setting.
- These models employ a lumped element quadrature hybrid with a matched pair of L-C networks acting as sliding short circuits on the outputs. The electrical length of the short effectively delays the reflected signal which appears at the isolated port of the quadrature hybrid.
- Merrimac phase shifters can be supplied screened for specific applications.

Package Outline



- 22Feb96
- NOTES:
- Tolerance on 3 place decimals $\pm .020$ (51) except as noted.
 - Dimensions in inches over millimeters
 - Phase shift is negative with clockwise rotation of knob
 - Dial is uncalibrated.