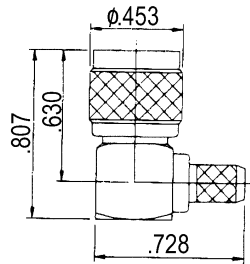


# MINI-UHF: Flexible Cable Crimp Attachment

## Right Angle Plug Crimp

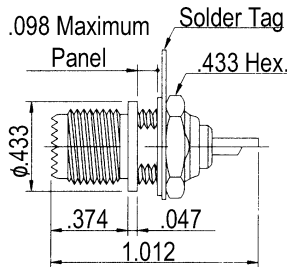


Part Number	Cable
622-900-1160Y	RG-58,58A,141A

• See page 119 for cable assembly procedures: CM-06

# MINI-UHF: Bulkhead, Panel & PCB Mount Receptacles

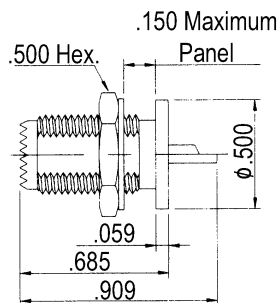
## Straight Bulkhead Jack Receptacle (Front Mount)



Part Number	Mounting Hole
621-029-0000Y	No. 029

• See page 83 for mounting hole layout.

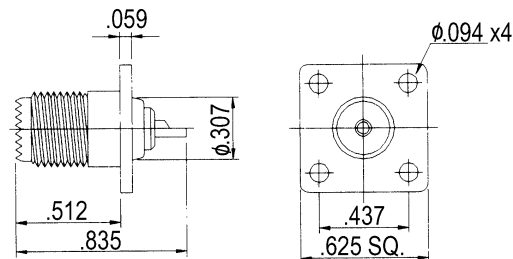
## Straight Bulkhead Jack Receptacle (Rear Mount)



Part Number	Mounting Hole
621-031-0000Y	No. 031

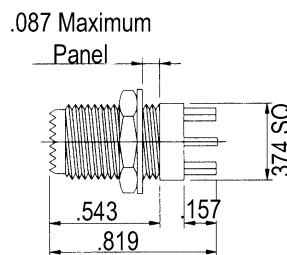
• See page 83 for mounting hole layout.

## Square Flange Jack Receptacle



Part Number
621-064-0000Y

## Straight PCB Mount Jack Receptacle



Part Number	Mounting Hole
621-092-0040Y	No. 092

• See page 83 for mounting hole layout.

Note: Dimensions shown in inches.

Winchester/Retconn

400 Park Road • Watertown, Connecticut 06795-5000 • Phone: (860) 945-5000 • FAX: (860) 945-3950 • Internet: <http://www.litton-wed.com>