

PLEASE CHECK WWW.MOLEX.COM FOR LATEST PART INFORMATION

Part Number: [0050650016](#)
Status: **Active**
Overview: [SL Modular Connectors](#)
Description: 2.54mm Pitch, SL Dual Row Wire-to-Wire Panel Mount, 16 Circuits

Documents:

[3D Model](#) [Packaging Specification PK-70022-100-001 \(PDF\)](#)
[3D Model \(PDF\)](#) [RoHS Certificate of Compliance \(PDF\)](#)
[Drawing \(PDF\)](#)

Agency Certification

CSA LR19980
 UL E29179

General

Product Family [Accessories](#)
 Series [70022](#)
 Component Type [Panel Mount](#)
 Overview [SL Modular Connectors](#)
 Product Name [SL](#)
 UPC [800753617568](#)

Physical

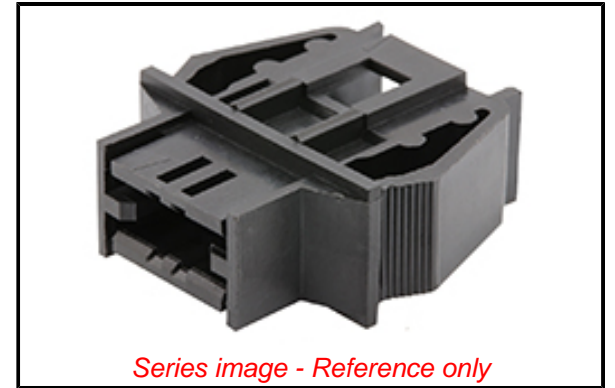
Circuits (Loaded) 16
 Circuits (maximum) 16
 Color - Resin Black
 Flammability 94V-0
 Lock to Mating Part Yes
 Material - Resin Polyester
 Net Weight 4.504/g
 Packaging Type Bag

Material Info

Engineering Number 70022-0016

Reference - Drawing Numbers

Packaging Specification [PK-70022-100-001](#)
 Sales Drawing [SD-70022-XXXX-001](#), [SD-70022-XXXX-003](#)



EU ELV

Not Relevant

EU RoHS

Compliant

REACH SVHC

Not Contained Per -
 D(2021)4569-DC (8
 July 2021)

Halogen-Free

Status

Not Low-Halogen

For more information, please visit [Contact US](#)

China ROHS

ELV

RoHS Phthalates

China RoHS

Green Image

Not Relevant

Not Contained

Search Parts in this Series

[70022 Series](#)

Use With

[70066](#) SL Crimp Housing. [70475](#) SL IDT
 Connector Assembly. [70431](#) SL FFC/FPC
 Connector

PLEASE CHECK WWW.MOLEX.COM FOR LATEST PART INFORMATION

Mouser Electronics

Authorized Distributor

Click to View Pricing, Inventory, Delivery & Lifecycle Information:

[Molex:](#)

[50-65-0016](#)