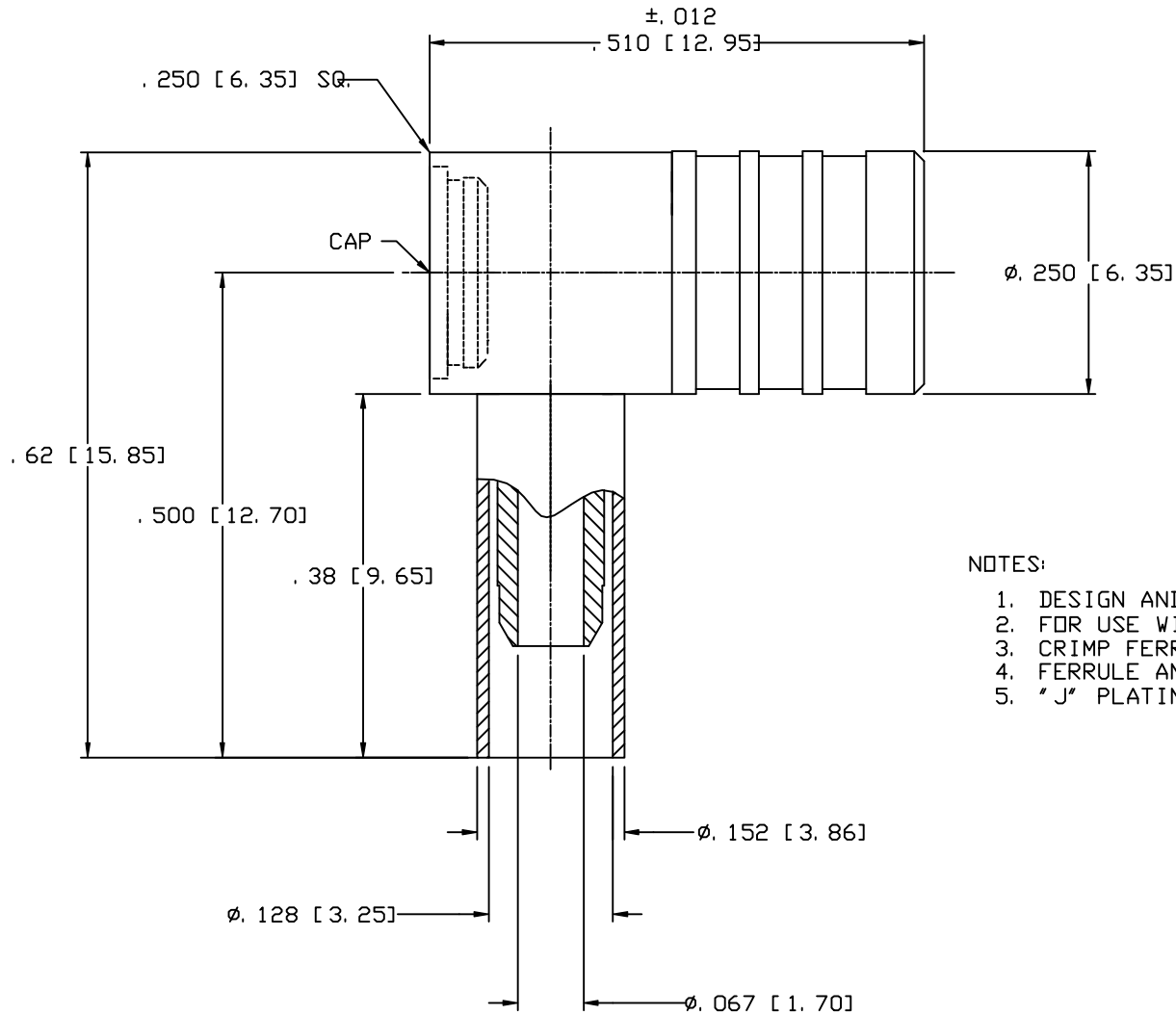


CAD DRAWING - NO MANUAL REVISIONS



NOTES:

1. DESIGN AND INTERFACE PER I. D. S. -09.
2. FOR USE WITH RG 174, 179, 188, 316 CABLES.
3. CRIMP FERRULE USING Y-196 (M22520/5-03), .128 HEX.
4. FERRULE AND CAP SHIPPED LOOSE.
5. "J" PLATING -TEST TO 20 GAMMA MAX.

				<p>PALCO CONNECTOR</p> <p>22 GREAT HILL RD., NAUGATUCK, CT 06770</p> <p>UNLESS OTHERWISE SPECIFIED, PALCO WORKMANSHIP STANDARDS APPLY</p> <p>TOLERANCES ON: DECIMALS: XX ±.01 .XXX ±.005 ANGLES ±1/2° 32'</p> <p>DIMENSIONS IN INCHES OR (METRIC) DO NOT SCALE PRINTS</p>	DRAWN EK	CHECKED JEM	ENGINEER EK	APPROVED JEM	FSCM 58167
						DESCRIPTION SMB, PLUG, RT ANGLE CRIMP			
H	PER ECN 7984	05/16/05	JEM		DATE 05/16/05	DRAWING NO. 09-2800-0670	PLATING OPT. J		
REV.	DESCRIPTION	DATE	APPR.		CATALOG ITEM				

THE INFORMATION IN THIS DOCUMENT IS CONFIDENTIAL AND PROPRIETARY AND MAY NOT BE USED FOR ANY PURPOSE WITHOUT THE WRITTEN CONSENT OF PALCO.