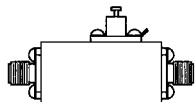
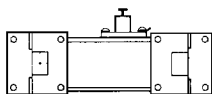


Wideband Millimeter Amplifiers: 18.0 to 26.5 GHz

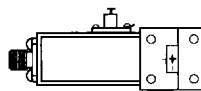
Case Types (See Section 5 for detailed case drawings.)



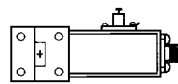
Coax



WR-42



Coax/WR-42



WR-42/Coax

AMT Series—High Performance Connectorized Amplifiers³

Guaranteed Specifications @ 25°C Case Temperature

Model	Frequency Response (GHz) Min.	Gain (dB)	Gain (dB)	Noise Figure (dB)	Power Output for 1 dB Gain Compression (dBm)	Gain Flatness (±dB)	Typical Third Order Intercept Point (dBm)	VSWR (50 ohms) Maximum		Input Power Voltage (VDC) ¹	Input Power Current (mA) Max.	Case Type ²
		Min.	Max.	Max.	Min.	Max.		In	Out			
AMT-26135-XX	18-26.5	25	31	6.0	+21	2.50	+28	2.2	2.2	+12	1050	IQ6
AMT-26137-XX	18-26.5	37	45	6.0	+21	3.00	+28	2.2	2.2	+12	1150	IQ8
AMT-26175-XX	18-26.5	25	31	5.5	+12	2.50	+19	2.2	2.2	+12	380	IQ6
AMT-26176-XX	18-26.5	30	36	5.5	+12	2.50	+19	2.2	2.2	+12	460	IQ8
AMT-26177-XX	18-26.5	37	45	5.5	+12	3.00	+19	2.2	2.2	+12	540	IQ8

AMT Series —Temperature Compensated Connectorized Amplifiers³

Guaranteed Specifications @ -54° to +71°C Case Temperature

AMT-26185-XX	18-26.5	20	27	8.5	+12	2.5	+19	2.2	2.2	+12	400	IQ8
AMT-26187-XX	18-26.5	31	39	8.0	+12	3.0	+19	2.2	2.2	+12	480	IQ10
AMT-26188-XX	18-26.5	38	46	8.0	+12	3.0	+19	2.2	2.2	+12	520	IQ10

Notes:

1. Units contain internal voltage regulator and operate with +12 to +15 VDC.
2. For case drawings, refer to AMT-26XXX series, Section 5.
3. Maximum safe input power: +10 dBm