

.100" (2.54 mm) Contact 1400 Series, "TERMACON"



1400 Series crimp contacts are designed specifically to crimp 22 - 28 gauge wire. These contacts are required to produce complete assemblies of 1300 and 1500 series connector housings.

Standard Contacts

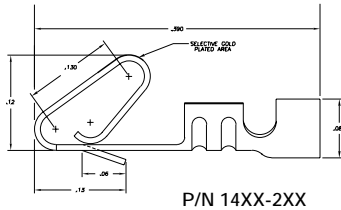
Recommended for 1300-0XX, 1300-1XX, and 1300-2XX series crimp receptacles

Tin Plated

14X0 - 113 Loose style
14X0 - 114 Chain Style

Gold Plated

14X2 - 113 Loose style
14X2 - 114 Chain style



Selective Gold Plated

14X8 - 113 Chain style (.000015)
14XF - 114 Chain style (.000030)



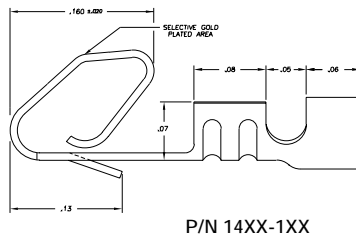
Recommended for
1500 series card edge style receptacles

Tin Plated

14X0 - 213 Loose style
14X0 - 214 Chain Style

Gold Plated

14X2 - 213 Loose style
14X2 - 214 Chain style



Selective Gold

14X8 - 213 Chain style (.000015)
14XF - 214 Chain style (.000030)

Anti-Tangle Contact

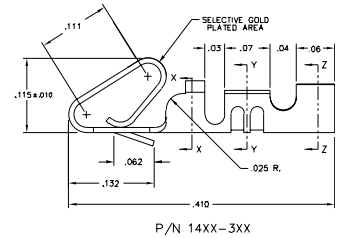
Recommended for 1300-3XX, 1300-4XX, and 1300-5XX series crimp receptacles

Tin Plated Anti-tangle

14X0 - 312 Loose style
14X0 - 314 Chain Style

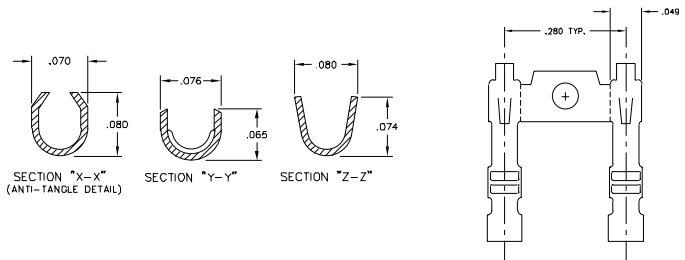
Gold Plated Anti-tangle

14X2 - 312 Loose style
14X2 - 314 Chain style



Selective Gold Plated Anti-tangle

14X8 - 314 Chain style (.000015)



Tin Plated Anti-tangle with high pressure/point contact

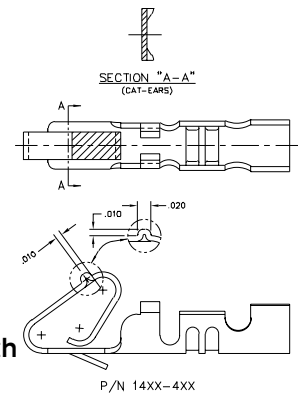
14X0 - 412 Loose style
14X0 - 414 Chain Style

Gold Plated Anti-tangle with high pressure/point contact

14X2 - 412 Loose style
14X2 - 414 Chain style

Selective Gold Anti-tangle with high pressure/point contact

14X8 - 414 Chain style (.000015)
14XF - 414 Chain style (.000030)



NOTES:

- CONTACT MATERIAL: 140X-XXX - COPPER ALLOY
141X-XXX - PHOSPHOR BRONZE, ALLOY 510
- CONTACT FINISH: 14X0-11X - BRITE TIN PLATE OVER COPPER PLATE.
14X7-11X - .000030 MIN. OVERALL GOLD PLATE OVER NICKEL PLATE
14X8-11X - 90/10 TIN/LEAD OVER NICKEL PLATE.
14X8-11X - .000015 MIN. SELECTIVE GOLD PLATE IN CONTACT AREA OVER .000050 NICKEL PLATE ALL OVER.
14XF-11X - .000030 MIN. SELECTIVE GOLD PLATE IN CONTACT AREA OVER .000050 NICKEL PLATE ALL OVER.

NOTES:

- CONTACT MATERIAL:
P/N 140X-XXXX-XXX = .008±.004 THICK BRASS ALLOY CDA 260, SPRING TEMPER, TENSILE STRENGTH=91-100 KSI, ELONGATION=3% (STRIP WIDTH=.900±.003)
P/N 141X-XXXX-XXX = .008±.004 THICK PHOSPHOR BRONZE ALLOY 510, FULL HARD TEMPER, TENSILE STRENGTH=76-91 KSI, ELONGATION=9-11% (STRIP WIDTH=.900±.003)
- CONTACT FINISH:
P/N 14X0-XXX = .000100/.000200 BRITE TIN OVER .000100/.000200 COPPER (-206);
P/N 14X2-XXX = .000015 MIN. GOLD OVER .000050 MIN. NICKEL (-802);
P/N 14X8-XXX = .000015 MIN. SELECT GOLD OVER .000050 MIN. NICKEL (-801);
P/N 14XB-XXX = .000150/.000250 BRITE TIN OVER .000030/.000100 NICKEL (-209);
P/N 14XF-XXX = .000030 MIN. SELECT GOLD OVER .000050 MIN. NICKEL (-820);

APPLICATION TOOLING