

AFCI CONFIDENTIAL

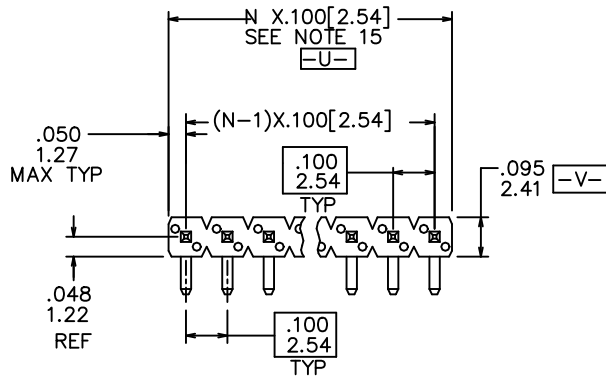
Amphenol FCI

This document is the property of and embodies CONFIDENTIAL and PROPRIETARY information of AFCI. No part of the information shown on this document may be used in any way or disclosed to others without the written consent of Amphenol Corporation. © 2020 Amphenol Corporation

PRODUCT NUMBER

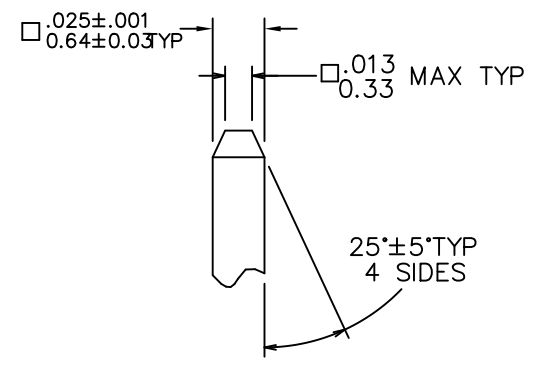
XXXXX-YYYHTLF

- LEAD FREE OPTION  
SEE NOTE 1,8
- PACKAGING OPTION  
SEE NOTE 1
- HIGH TEMPERATURE PLASTIC  
SEE NOTE 1
- NO OF POSITIONS  
SEE NOTE 1
- PIN PLATING  
SEE SHEET 2
- BASE PART NO.

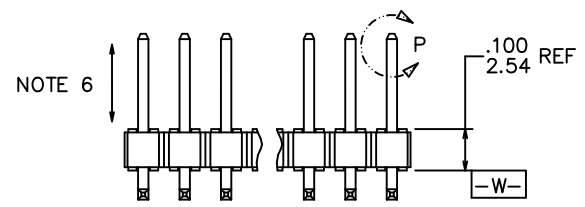


TOP VIEW

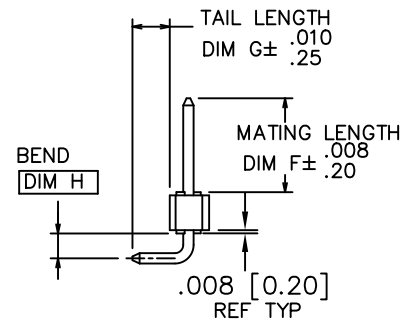
⊕ ∅.020/0.51 (M) U (M) V (S) W  
NOTE 4



DETAIL P  
TYP BOTH ENDS



SIDE VIEW



END VIEW

68015-X XX-XXX XXX LF

- TAIL LENGTH (EXAMPLE BELOW)  
3.0mm=030 12.8mm=128 (SEE NOTE 11 & 12)
- MATING LENGTH (EXAMPLE BELOW)  
5.0mm=050 25.5mm=255 (SEE NOTE 11 & 12)
- TOTAL NUMBER OF POSITION  
FROM 2 THRU 36 POS. (SEE NOTE 1)
- PIN PLATING (SEE NOTE 13)  
1=0.76µm Au  
4= PURE TIN  
8=0.36µm Au
- BASE PART NO.  
SINGLE ROW RIGHT ANGLE

|                             |                |     |    |                       |                                       |                               |                  |                |       |   |  |
|-----------------------------|----------------|-----|----|-----------------------|---------------------------------------|-------------------------------|------------------|----------------|-------|---|--|
| mat'l. code<br>SEE NOTE 2&3 |                |     |    | surface<br>ISO 1302 ✓ |                                       | tolerance<br>ISO 406 ISO 1101 |                  | projection<br> |       | product family<br>BERGSTIK                |  |
| ltr                         | ecn            | no  | dr | date                  | tolerances unless otherwise specified |                               | INCH/mm          |                | title |   |  |
| BA                          | N11-0118       | J.Z |    | 04/11/11              | angles                                | linear                        | .xxx±0.01/.X±0.3 | scale 1:1      |       | BERGSTIK® II HEADER<br>.100/2.54cc SR R/A |  |
| BB                          | ELX-N-16105    | ZK  |    | 10/22/13              |                                       | .xxx±0.005/.XX±0.13           |                  |                |       |   |  |
| BC                          | ELX-N-16356    | ZK  |    | 11/25/13              | X°±2°                                 | .xxx±0.0020/±0.051            |                  |                |       |   |  |
| BD                          | ELX-N-42692    | MK  |    | 11/03/21              | dr                                    | T.BREWBAKER                   | 01/31/95         | dwg no         |       | sheet 1 of 4 size                         |  |
| BE                          | ELX-N-48897    | JJ  |    | 08/01/23              | enr                                   | T.HANNA                       | 01/31/95         | 68015          |       | A4  |  |
|                             |                |     |    |                       | chr                                   | T.HANNA                       | 01/31/95         | type           |       | Product Customer Drawing                  |  |
|                             |                |     |    |                       | appd                                  | T.HANNA                       | 01/31/95         |                |       |   |  |
| sheet index                 | revision sheet | BE  | BE | BE                    | BE                                    |                               |                  |                |       |   |  |

AFCI CONFIDENTIAL


Amphenol FCI

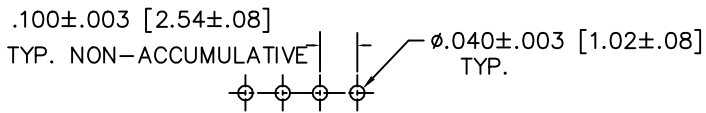
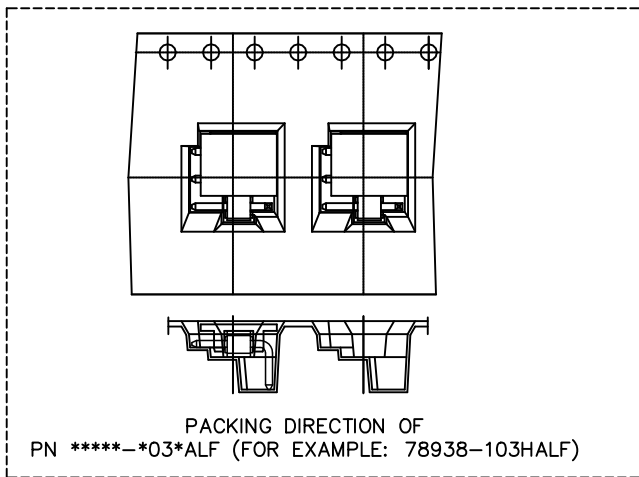
This document is the property of and embodies CONFIDENTIAL and PROPRIETARY information of AFCI. No part of the information shown on this document may be used in any way or disclosed to others without the written consent of Amphenol Corporation. © 2020 Amphenol Corporation

| PIN PLATING CODES: |   |
|--------------------|---|
| XXXX-1YY           | 30u"/0.76u MIN (SEE NOTE 9) OVER 50u"/1.27u MIN Ni      |
| XXXX-2YY           | 15u"/0.38u MIN (SEE NOTE 9) OVER 50u"/1.27u MIN Ni      |
| XXXX-3YY           | 50u"/1.27u MIN (SEE NOTE 9) OVER 50u"/1.27u MIN Ni      |
| XXXX-4YY           | 100u"/2.54u MIN Sn OVER 50u"/1.27u MIN Ni (SEE NOTE 10) |
| XXXX-4YYHLF        |   |
| XXXX-5YY           | 15u"/0.38u MIN (SEE NOTE 9) OVER 50u"/1.27u MIN Ni      |
| XXXX-6YY           | 30u"/0.76u MIN (SEE NOTE 9) OVER 50u"/1.27u MIN Ni      |
| XXXX-7YY           | 30u"/0.76u MIN (SEE NOTE 9) OVER 50u"/1.27u MIN Ni      |
| XXXX-8YY           | 15u"/0.38u MIN (SEE NOTE 9) OVER 50u"/1.27u MIN Ni      |
| XXXX-9YY           | 15u"/0.38u MIN (SEE NOTE 9) OVER 50u"/1.27u MIN Ni      |
| XXXX-0YY           | 30u"/0.76u MIN (SEE NOTE 9) OVER 50u"/1.27u MIN Ni      |

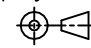
- 10. THIS PRODUCT HAS 100% TIN PLATING IN THE INTERFACE AND HAS NOT BEEN TESTED FOR WHISKER GROWTH IN ALL INTERCONNECT ENVIRONMENTS.
- 11. THE QAL DON'T EXCEED 31mm  
QAL= MATTING DIM+4.0mm<31mm WHERE THE SUM OF TAIL AND MATTING LENGTH DON'T EXCEED 27mm
- 12. INCREMENTS BY 0.1mm IN LENGTHS ONLY
- 13. FOR SPECIAL PACKAGING REQUEST PLEASE CONTACT PRODUCT MANAGER FOR AVAILABILITY
- 14. BEND DIMENSIONS AT 1.5mm ONLY
- 15. TO DETERMINE DIMENSIONS:  
N=NUMBER OF POSITION PER ROW  
EXAMPLE: 10 POS. N X .100/2.54

NOTES

- 1. PART NUMBER OPTIONS:  
PIN PLATING CODES (SEE ABOVE)  
HIGH TEMP. MATERIAL:  
PART NUMBERS WITH AND WITHOUT "H" WILL BE SUPPLIED WITH HIGH TEMPERATURE PLASTIC.  
NUMBER OF POSITION:  
ANY NUMBER OF POSITIONS FROM 2 THRU 36.   
PACKAGING:  
PACKAGED IN POLY BAGS.  
EIGHT DIGIT PART NUMBERS FOLLOWED BY A "T" ARE PACKAGED IN TUBES. SEE SPECIFIC PART NUMBERS FOR AVAILABILITY.  
EIGHT DIGIT PART NUMBERS FOLLOWED BY A "A" ARE PACKAGED IN TAPE & REEL WITH PICK UP CAP, COMMONLY CAP IS ASSEMBLED AT THE CENTER OF THE PRODUCT EXCEPT FOR THE PN \*\*\*\*\*-03\*ALF TO SEE RIGHT FIG.  
LEAD FREE:  
ADD "HLF" SUFFIX AT THE END OF PART NUMBER FOR LEAD FREE OPTION, NOT AVAILABLE FOR -5YY,-5YYH,-6YY & -6YYH.
- 2. BODY MATERIAL:  
MANUFACTURER'S OPTION OF NYLON OR PCT, GLASS FIBER REINFORCED, OR LCP MINERAL FILED FLAME RETARDENT PER UL-94V-0.  
COLOR: BLACK.  
PART NUMBERS WITH AND WITHOUT "H" SUFFIX WILL WITHSTAND EXPOSURE TO 260°C PEAK TEMPERATURE FOR 20 SECONDS IN WAVE SOLDER, INFRA-RED OR VAPOR PHASE SOLDER PROCESS.
- 3. PIN MATERIAL: PHOS-BRONZE.
- 4. MEASURED WITH PART IN RESTRAINED CONDITION.
- 5. TWO SIDES OF PIN TIPS NOT PLATED. TYPICAL BOTH ENDS.
- 6. 2LBS/0.9KG MIN PIN RETENTION IN EITHER DIRECTION.
- 7. MILITARY BERGSTIK HEADER  
P/N XXXXX-XY-MIL  
NOT AVAILABLE.
- 8. THESE PRODUCTS MEETS EUROPEAN UNION DIRECTIVES AND OTHER COUNTRY REGULATION AS DESCRIBED IN GS-22-008.
- 9. PLATING OPTIONS:  
PERFORMANCE PLATING WILL BE EITHER GOLD OR GXT ON POST OR TAIL, OPTIONALLY (78~295u"/2~7.5u) TIN ON TAIL.



RECOMMENDED HOLE PATTERN

|                             |     |                       |    |                               |                                       |   |           |                               |                     |
|-----------------------------|-----|-----------------------|----|-------------------------------|---------------------------------------|---|-----------|-------------------------------|---------------------|
| mat'l. code<br>SEE NOTE 2&3 |     | surface<br>ISO 1302 ✓ |    | tolerance<br>ISO 406 ISO 1101 |                                       | projection<br> |           | product family<br>BERGSTIK    |                     |
| ltr                         | ecn | no                    | dr | date                          | tolerances unless otherwise specified |   | title     |                               |                     |
| BE                          |     |                       |    |                               | angles                                | linear  | INCH/mm   |                               | BERGSTIK® II HEADER |
|                             |     |                       |    |                               | X±2'                                  |   | scale 1:1 |                               | .100/2.54cc SR R/A  |
|                             |     |                       |    |                               | dr                                    | T.BREWBAKER   | 01/31/95  | dwg no                        |                     |
|                             |     |                       |    |                               | enr                                   | T.HANNA   | 01/31/95  | sheet 2 of 4                  |                     |
|                             |     |                       |    |                               | chr                                   | T.HANNA   | 01/31/95  | size                          |                     |
|                             |     |                       |    |                               | appd                                  | T.HANNA   | 01/31/95  | A4                            |                     |
| sheet index                 |     | revision sheet        |    |                               |                                       | Amphenol FCI  |           | type Product Customer Drawing |                     |

AFCI CONFIDENTIAL

Amphenol FCI

This document is the property of and embodies CONFIDENTIAL and PROPRIETARY information of AFCI. No part of the information shown on this document may be used in any way or disclosed to others without the written consent of Amphenol Corporation. © 2020 Amphenol Corporation

| PRODUCT NUMBER       | MATING LENGTH    |                  | TAIL LENGTH      |                  | BEND DIM         |                 | PACKAGING            | LF OPTION |
|----------------------|------------------|------------------|------------------|------------------|------------------|-----------------|----------------------|-----------|
|                      | DIM F            | DIM F            | DIM G            | DIM G            | DIM H            | DIM H           |                      |           |
|                      | ENGLISH          | METRIC           | ENGLISH          | METRIC           | ENGLISH          | METRIC          |                      |           |
| 68015-YYY            | 0.230            | 5.84             | 0.090            | 2.29             | 0.060            | 1.52            | POLY BAGS/TUBES      | NOTE 1,8  |
| 68016-YYY            | 0.230            | 5.84             | 0.120            | 3.05             | 0.060            | 1.52            | POLY BAGS/TUBES      |           |
| 68023-YYY            | 0.135            | 3.43             | 0.305            | 7.75             | 0.135            | 3.43            | POLY BAGS            |           |
| 68417-YYY            | 0.230            | 5.84             | 0.390            | 9.91             | 0.060            | 1.52            | POLY BAGS            |           |
| 68423-YYY            | 0.318            | 8.08             | 0.120            | 3.05             | 0.060            | 1.52            | POLY BAGS/TUBES      |           |
| 68458-YYY            | 0.318            | 8.08             | 0.110            | 2.79             | 0.060            | 1.52            | POLY BAGS            |           |
| 68461-YYY            | 0.400            | 10.16            | 0.320            | 8.13             | 0.260            | 6.60            | POLY BAGS            |           |
| <del>68468-YYY</del> | <del>0.230</del> | <del>5.84</del>  | <del>0.195</del> | <del>4.95</del>  | <del>0.160</del> | <del>4.06</del> | <del>POLY BAGS</del> |           |
| 68488-YYY            | 0.230            | 5.84             | 0.180            | 4.57             | 0.060            | 1.52            | POLY BAGS            |           |
| <del>68494-YYY</del> | <del>0.400</del> | <del>10.16</del> | <del>0.110</del> | <del>2.79</del>  | <del>0.060</del> | <del>1.52</del> | <del>POLY BAGS</del> |           |
| 68498-YYY            | 0.230            | 5.84             | 0.220            | 5.59             | 0.160            | 4.06            | POLY BAGS            |           |
| 68626-YYY            | 0.230            | 5.84             | 0.295            | 7.49             | 0.060            | 1.52            | POLY BAGS            |           |
| <del>68627-YYY</del> | <del>0.120</del> | <del>3.05</del>  | <del>0.185</del> | <del>4.70</del>  | <del>0.150</del> | <del>3.81</del> | <del>POLY BAGS</del> |           |
| <del>68628-YYY</del> | <del>0.230</del> | <del>5.84</del>  | <del>0.590</del> | <del>14.99</del> | <del>0.060</del> | <del>1.52</del> | <del>POLY BAGS</del> |           |
| <del>68641-YYY</del> | <del>0.230</del> | <del>5.84</del>  | <del>0.490</del> | <del>12.45</del> | <del>0.060</del> | <del>1.52</del> | <del>POLY BAGS</del> |           |
| <del>68660-YYY</del> | <del>0.110</del> | <del>2.79</del>  | <del>0.230</del> | <del>5.84</del>  | <del>0.135</del> | <del>3.43</del> | <del>POLY BAGS</del> |           |
| <del>68694-YYY</del> | <del>0.600</del> | <del>15.24</del> | <del>0.120</del> | <del>3.05</del>  | <del>0.060</del> | <del>1.52</del> | <del>POLY BAGS</del> |           |
| 68757-YYY            | 0.350            | 8.89             | 0.220            | 5.59             | 0.100            | 2.54            | POLY BAGS            |           |
| 68758-YYY            | 0.275            | 6.99             | 0.120            | 3.05             | 0.060            | 1.52            | POLY BAGS            |           |
| 68764-YYY            | 0.100            | 2.54             | 0.120            | 3.05             | 0.060            | 1.52            | POLY BAGS            |           |
| <del>68782-YYY</del> | <del>0.318</del> | <del>8.08</del>  | <del>0.180</del> | <del>4.57</del>  | <del>0.060</del> | <del>1.52</del> | <del>POLY BAGS</del> |           |
| 68798-YYY            | 0.110            | 2.79             | 0.230            | 5.84             | 0.160            | 4.06            | POLY BAGS            |           |
| <del>69189-YYY</del> | <del>0.310</del> | <del>7.87</del>  | <del>0.250</del> | <del>6.35</del>  | <del>0.060</del> | <del>1.52</del> | <del>POLY BAGS</del> |           |
| <del>71270-YYY</del> | <del>0.600</del> | <del>15.24</del> | <del>0.180</del> | <del>4.80</del>  | <del>0.060</del> | <del>1.52</del> | <del>POLY BAGS</del> |           |
| <del>72342-YYY</del> | <del>0.120</del> | <del>3.05</del>  | <del>0.250</del> | <del>6.35</del>  | <del>0.060</del> | <del>1.52</del> | <del>POLY BAGS</del> |           |
| <del>78230-YYY</del> | <del>0.310</del> | <del>7.87</del>  | <del>0.330</del> | <del>8.38</del>  | <del>0.060</del> | <del>1.52</del> | <del>POLY BAGS</del> |           |
| <del>78231-YYY</del> | <del>0.310</del> | <del>7.87</del>  | <del>0.290</del> | <del>7.37</del>  | <del>0.060</del> | <del>1.52</del> | <del>POLY BAGS</del> |           |

|                             |                |                                       |                               |                |  |
|-----------------------------|----------------|---------------------------------------|-------------------------------|----------------|--|
| mat'l. code<br>SEE NOTE 2&3 |                | surface<br>ISO 1302 ✓                 | tolerance<br>ISO 406 ISO 1101 | projection<br> | product family<br>BERGSTIK                         |
| ltr                         | ecn no dr date | tolerances unless otherwise specified |                               | INCH/mm        | title<br>BERGSTIK® II HEADER<br>.100/2.54cc SR R/A |
| BE                          |                | angles                                | linear                        |                |  |
|                             |                | X±2'                                  |                               | scale 1:1      | dwg no   |
|                             |                | dr                                    | T.BREWBAKER                   | 01/31/95       | sheet 3 of 4                                       |
|                             |                | enr                                   | T.HANNA                       | 01/31/95       | size   |
|                             |                | chr                                   | T.HANNA                       | 01/31/95       | 68015  |
|                             |                | appd                                  | T.HANNA                       | 01/31/95       | A4   |
| sheet index                 | revision sheet |                                       |                               |                | type Product Customer Drawing                      |

AFCI CONFIDENTIAL

Amphenol FCI

This document is the property of and embodies CONFIDENTIAL and PROPRIETARY information of AFCI. No part of the information shown on this document may be used in any way or disclosed to others without the written consent of Amphenol Corporation. © 2020 Amphenol Corporation

| PRODUCT NUMBER | MATING LENGTH |        | TAIL LENGTH |        | BEND DIM |        | PACKAGING | LF OPTION |
|----------------|---------------|--------|-------------|--------|----------|--------|-----------|-----------|
|                | DIM F         | DIM F  | DIM G       | DIM G  | DIM H    | DIM H  |           |           |
|                | ENGLISH       | METRIC | ENGLISH     | METRIC | ENGLISH  | METRIC |           |           |
| 78234-XY       | 0.230         | 5.84   | 0.140       | 3.56   | 0.160    | 4.06   | POLY BAGS | OB        |
| 78541-XY       | 0.318         | 8.08   | 0.080       | 2.03   | 0.060    | 1.52   | POLY BAGS | OB        |
| 78587-YYY      |               |        | UNAVAILABLE |        |          |        |           |           |
| 78938-XY       | 0.120         | 3.05   | 0.120       | 3.05   | 0.060    | 1.52   | POLY BAGS | NOTE 1,8  |
| 78955-XY       | 0.075         | 1.91   | 0.090       | 2.29   | 0.060    | 1.52   | POLY BAGS | OB        |
| 78978-XY       | 0.120         | 3.05   | 0.318       | 8.08   | 0.135    | 3.43   | POLY BAGS | OB        |
| 79409-YYY      |               |        | UNAVAILABLE |        |          |        |           |           |
| 84846-XYH      | 0.140         | 3.56   | 0.290       | 7.37   | 0.153    | 3.89   | POLY BAGS | OB        |
| 84917-XYH      | 0.090         | 2.29   | 0.195       | 4.95   | 0.190    | 4.83   | POLY BAGS | OB        |
| 84935-XYH      | 0.450         | 11.43  | 0.320       | 8.13   | 0.260    | 6.60   | POLY BAGS | OB        |
| 84936-XYH      | 0.350         | 8.89   | 0.120       | 3.05   | 0.060    | 1.52   | POLY BAGS | OB        |
| 87532-XYH      | 0.230         | 5.84   | 0.890       | 22.61  | 0.060    | 1.52   | POLY BAGS | OB        |
| 88813-XY       | 0.230         | 5.84   | 0.085       | 2.16   | 0.060    | 1.52   | POLY BAGS | OB        |
| 92050-XY       | 0.162         | 4.11   | 0.120       | 3.05   | 0.060    | 1.52   | POLY BAGS | OB        |
| 92632-XY       | 0.100         | 2.54   | 0.318       | 8.08   | 0.060    | 1.52   | POLY BAGS | OB        |
| 92909-XY       | 0.400         | 10.16  | 0.220       | 5.59   | 0.060    | 1.52   | POLY BAGS | OB        |
| 94099-XY       | 0.157         | 3.99   | 0.090       | 2.29   | 0.060    | 1.52   | POLY BAGS | OB        |
| 94529-XYH      | 0.120         | 3.05   | 0.295       | 7.49   | 0.135    | 3.43   | POLY BAGS | OB        |
| 94671-XYH      | 0.090         | 2.29   | 0.085       | 2.16   | 0.180    | 4.57   | POLY BAGS | OB        |
| 95653-XYH      | 0.330         | 8.38   | 0.310       | 7.87   | 0.160    | 4.06   | POLY BAGS | OB        |
| 95666-XYH      | 0.230         | 5.84   | 0.145       | 3.68   | 0.060    | 1.52   | POLY BAGS | OB        |
| 10089061-YYY   | 0.125         | 3.18   | 0.318       | 8.08   | 0.135    | 3.43   | POLY BAGS | OB        |

|                             |                |                                       |  |                               |  |      |
|-----------------------------|----------------|---------------------------------------|--|-------------------------------|--|------|
| mat'l. code<br>SEE NOTE 2&3 |                | surface<br>ISO 1302 ✓                 | tolerance<br>ISO 406 ISO 1101                              | projection<br>                | product family<br>BERGSTIK                         |      |
| ltr                         | ecn no dr date | tolerances unless otherwise specified |  | INCH/mm                       | title<br>BERGSTIK® II HEADER<br>.100/2.54cc SR R/A |      |
| BE                          |                | angles                                | linear   |                               |  |      |
|                             |                | X°±2'                                 | .xxx±0.01/X±0.3<br>.xxx±0.005/X±0.13<br>.xxx±0.0020/±0.051 | scale 1:1                     |  |      |
|                             |                | dr                                    | T.BREWBAKER 01/31/95                                       | Amphenol<br>FCI               | dwg no   |      |
|                             |                | enr                                   | T.HANNA 01/31/95   |                               | sheet 4 of 4                                       | size |
|                             |                | chr                                   | T.HANNA 01/31/95   |                               | 68015  | A4   |
|                             |                | appd                                  | T.HANNA 01/31/95   | type Product Customer Drawing |  |      |
| sheet index                 | revision sheet |                                       |  |                               |  |      |