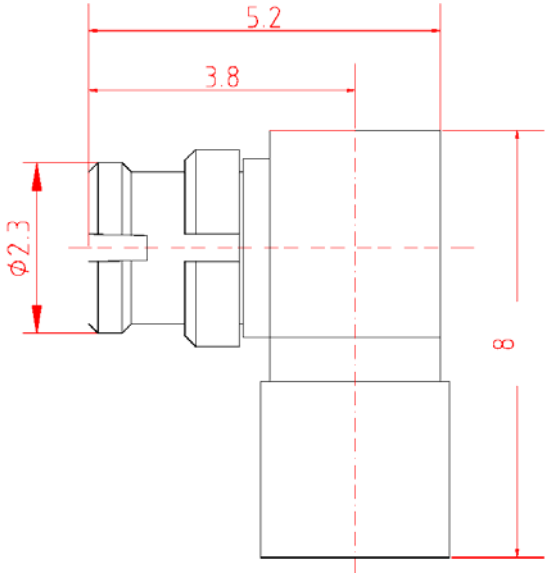


SPECIFICATIONS

Impedance: 50ohm
 Frequency Range: DC-50GHz
 VSWR: $\leq 1.1 + 0.01f$
 Body Material: Beryllium Copper, gold plated
 Contact Material: Beryllium Copper, gold plated
 Insulator Material: Teflon



RoHS compliant

Rev.	Description	Date	Approved	Drawing	Name	Date
				Approved	Howard	01/05/08
				Checked	Lizzy	01/05/08
				Drawn	Tina	01/05/08
				0.0 ± 0.35	0.00 ± 0.20	Angles ± 3'
						UNIT: mm

Central Components Manufacturing
 440 Lincoln Blvd., Middlesex, New Jersey 08846
 Phone 732 469-5720 888 288-5152 Fax 732 469-1919

Part No.: **CRF-SMPM-KWB1**

Description: Mini SMP Connector