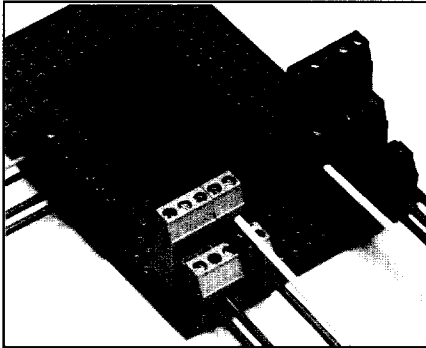


EL1M, EL2M, & EL3M Multi-Tier Modular Terminal Blocks

.200"



MATERIALS:

Contact: Copper alloy
Plating: Electrolytic tin
Hardware: M3 Copper alloy, Nickel plated
Housing: Black or green UL94V-0 thermoplastic

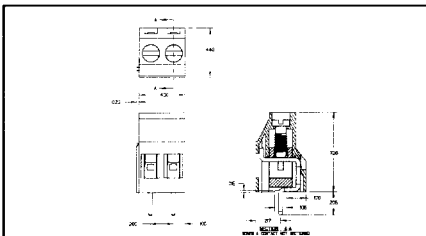
SPECIFICATIONS:

Maximum Operating Temperature: 105° C
Dielectric Withstanding: 1600 V
Current Rating: 20A (28A Derated)

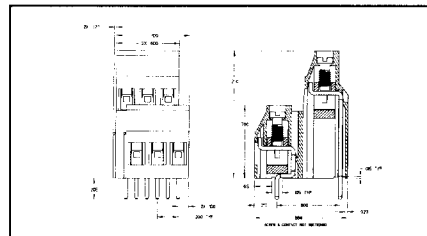
Operating Voltage: 300 V
Insulation Resistance: 10⁹ ohms
Wire Range: # 12-30 AWG
Wire Pullout Force: Per UL486E
INSTALLATION:
Wire Strip Length: .310"
Tightening Torque: 7 in.-lbs.
PCB Hole Diameter: .053"

APPROVALS:

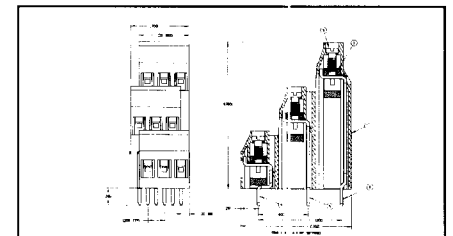
UL recognized, CSA approval pending.
 Part numbers listed are for black. To order green, change the 8th character in the part number from B to G.



POS	CATALOG #	L INCHES
EL1M MODULE		
2	EL1M022B00	.40
3	EL1M032B00	.60
EL1M ASSEMBLY		
4	EL1M042B00	.80
5	EL1M052B00	1.00
6	EL1M062B00	1.20
7	EL1M072B00	1.40
8	EL1M082B00	1.60
9	EL1M092B00	1.80
10	EL1M102B00	2.00
11	EL1M112B00	2.20
12	EL1M122B00	2.40
13	EL1M132B00	2.60
14	EL1M142B00	2.80
15	EL1M152B00	3.00
16	EL1M162B00	3.20
17	EL1M172B00	3.40
18	EL1M182B00	3.60
19	EL1M192B00	3.80
20	EL1M202B00	4.00
21	EL1M212B00	4.20
22	EL1M222B00	4.40
23	EL1M232B00	4.60
24	EL1M242B00	4.80
25	EL1M252B00	5.00
26	EL1M262B00	5.20
27	EL1M272B00	5.40
28	EL1M282B00	5.60
29	EL1M292B00	5.80
30	EL1M302B00	6.00
31	EL1M312B00	6.20
32	EL1M322B00	6.40



POS	CATALOG #	L INCHES
EL2M MODULE		
4	EL2M042B00	.50
6	EL2M062B00	.70
EL2M ASSEMBLY		
8	EL2M082B00	.90
10	EL2M102B00	1.10
12	EL2M122B00	1.30
14	EL2M142B00	1.50
16	EL2M162B00	1.70
18	EL2M182B00	1.90
20	EL2M202B00	2.10
22	EL2M222B00	2.30
24	EL2M242B00	2.50
26	EL2M262B00	2.70
28	EL2M282B00	2.90
30	EL2M302B00	3.10
32	EL2M322B00	3.30
34	EL2M342B00	3.50
36	EL2M362B00	3.70
38	EL2M382B00	3.90
40	EL2M402B00	4.10
42	EL2M422B00	4.30
44	EL2M442B00	4.50
46	EL2M462B00	4.70
48	EL2M482B00	4.90
50	EL2M502B00	5.10
52	EL2M522B00	5.30
54	EL2M542B00	5.50
56	EL2M562B00	5.70
58	EL2M582B00	5.90
60	EL2M602B00	6.10
62	EL2M622B00	6.30
64	EL2M642B00	6.50



POS	CATALOG #	L INCHES
EL3M MODULE		
6	EL3M062B00	.50
9	EL3M092B00	.70
EL3M ASSEMBLY		
12	EL3M122B00	.90
15	EL3M152B00	1.10
18	EL3M182B00	1.30
21	EL3M212B00	1.50
24	EL3M242B00	1.70
27	EL3M272B00	1.90
30	EL3M302B00	2.10
33	EL3M332B00	2.30
36	EL3M362B00	2.50
39	EL3M392B00	2.70
42	EL3M422B00	2.90
45	EL3M452B00	3.10
48	EL3M482B00	3.30
51	EL3M512B00	3.50
54	EL3M542B00	3.70
57	EL3M572B00	3.90
60	EL3M602B00	4.10
63	EL3M632B00	4.30
66	EL3M662B00	4.50
69	EL3M692B00	4.70
72	EL3M722B00	4.90
75	EL3M752B00	5.10
78	EL3M782B00	5.30
81	EL3M812B00	5.50
84	EL3M842B00	5.70
87	EL3M872B00	5.90
90	EL3M902B00	6.10
93	EL3M932B00	6.30
96	EL3M962B00	6.50