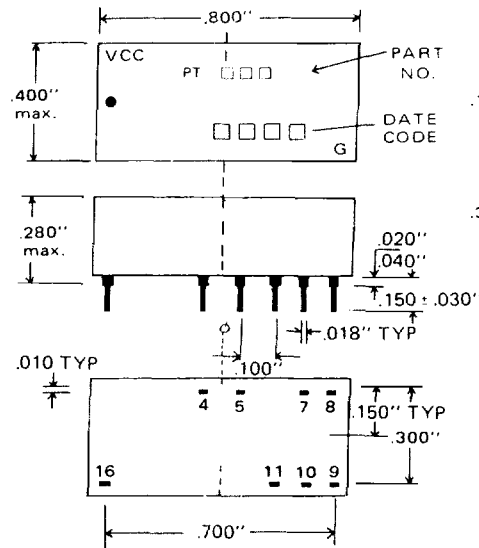


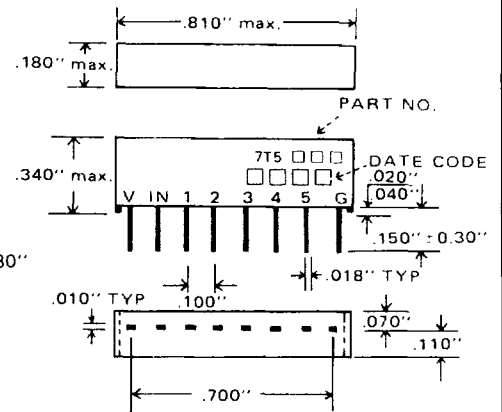
SPECIFICATIONS:

- Operating temperature range 0°C to +70°C (-55°C to +125°C on request).
- Supply voltage: 5.0 ± 0.25VDC.
- Supply Current: ICCH 30mA max. ICCL 60mA max.
- Input pulse amplitude: 3.2volts.
- Input pulse width: min 100% of total delay.
- Input pulse PPR: min 3 × pulse width.
- Input rise time: 2.0ns.
- Output rise time: 4.0ns max.

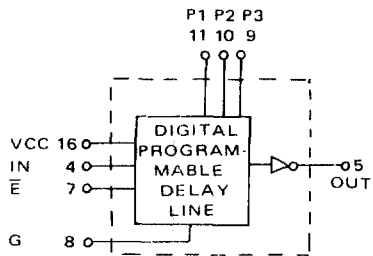
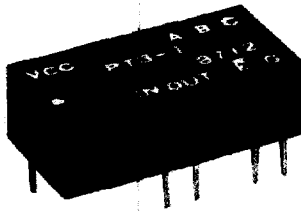
MECHANIC: PT



7T



PT

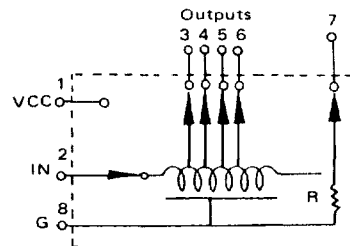
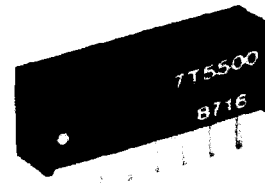


PART NO.	ZERO STEP (ns)	TOTAL (ns)	PER STEP (ns)
PT3-1	7 ± 1	14 ± 2	1 ± 0.5
PT3-2		21 ± 2	2 ± 0.6
PT3-3		28 ± 2	3 ± 0.7
PT3-4		35 ± 2	4 ± 0.8
PT3-5		42 ± 2.1	5 ± 1.0
PT3-6		49 ± 2.4	6 ± 1.2

PART NO.	ZERO STEP (ns)	TOTAL (ns)	PER STEP (ns)
PT3-7	7 ± 2	56 ± 2.8	7 ± 1.4
PT3-8		63 ± 3.1	8 ± 1.6
PT3-9		70 ± 3.5	9 ± 1.8
PT3-10		77 ± 3.8	10 ± 2.0
PT3-11		84 ± 4.2	11 ± 2.0
PT3-12		91 ± 4.5	12 ± 2.0

*New Four bits programmable Delay Line available

7T



Schematic Diagram for 5 Delays Output

PART NO.	TOTAL DELAY (ns)	TAP TO TAP (ns)
7T5200	20 ± 2	4 ± 2
7T5250	25 ± 2	5 ± 2
7T5300	30 ± 2	6 ± 2
7T5400	40 ± 2	8 ± 2
7T5500	50 ± 2.5	10 ± 2
7T5600	60 ± 3	12 ± 2
7T5750	75 ± 3.7	15 ± 2

PART NO.	TOTAL DELAY (ns)	TAP TO TAP (ns)
7T5101	100 ± 5	20 ± 2
7T5125	125 ± 6.2	25 ± 2
7T5151	150 ± 7.5	30 ± 2
7T5175	175 ± 8.7	35 ± 2
7T5201	200 ± 10	40 ± 2
7T5251	250 ± 12.5	50 ± 2.5