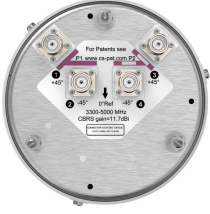


UU-360S-F



4-port small cell antenna, 4x 3300-5000 MHz. 360° Horizontal Beamwidth, fixed tilt.

- Light weight, low profile omnidirectional antenna ideal for low to moderate gain applications
- Compact and small footprint, space-saving design for high-density environments
- Supports up to 4T4R applications

General Specifications

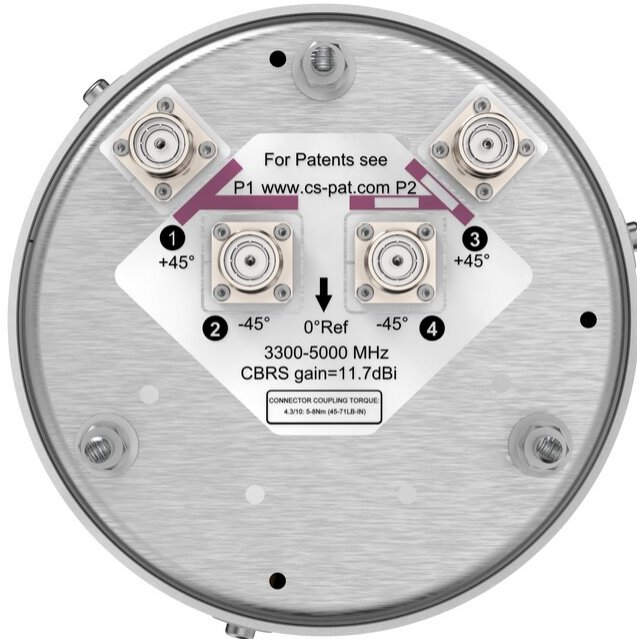
Antenna Type	Small Cell
Band	Single band
Color	Light Gray (RAL 7035)
Grounding Type	RF connector inner conductor and body grounded to reflector and mounting bracket
Performance Note	Outdoor usage
Radome Material	ASA, UV stabilized
Reflector Material	Aluminum
RF Connector Interface	4.3-10 Female
RF Connector Location	Bottom
RF Connector Quantity, high band	4
RF Connector Quantity, total	4

Dimensions

Width	200 mm 7.874 in
Depth	200 mm 7.874 in
Length	600 mm 23.622 in
Net Weight, without mounting kit	4.7 kg 10.362 lb

Port Configuration

UU-360S-F



Electrical Specifications

Impedance	50 ohm
Operating Frequency Band	3300 – 5000 MHz
Polarization	±45°
Total Input Power, maximum	360 W

Electrical Specifications

Frequency Band, MHz	3300–3600	3550–3700	3600–3900	3900–4200	4200–4500	4500–5000
Gain, dBi	11.5	11.7	11.6	11.9	11.7	14.1
Beamwidth, Horizontal, degrees	360	360	360	360	360	360
Beamwidth, Vertical, degrees	9.1	9.1	8.5	7.8	7.1	6.7
Beam Tilt, degrees	4	4	4	4	4	4
USLS (First Lobe), dB	15	15	15	15	15	15
Isolation, Cross Polarization, dB	25	25	25	25	25	25

UU-360S-F

Isolation, Inter-band, dB	28	28	28	28	28	28
VSWR Return loss, dB	1.5 14.0	1.5 14.0	1.5 14.0	1.5 14.0	1.5 14.0	1.5 14.0
Input Power per Port at 50°C, maximum, watts	125	125	125	125	125	125

Electrical Specifications, BASTA

Frequency Band, MHz	3300–3600	3550–3700	3600–3900	3900–4200	4200–4500	4500–5000
Gain by all Beam Tilts, average, dBi	11.2	11.2	11.3	11.4	11.4	13.3
Gain by all Beam Tilts Tolerance, dB	±0.5	±0.4	±0.4	±0.7	±0.4	±1.8
Beamwidth, Vertical Tolerance, degrees	±0.7	±0.8	±1	±0.9	±1	±0.8

Mechanical Specifications

Wind Loading @ Velocity, frontal	58.0 N @ 150 km/h (13.0 lbf @ 150 km/h)
Wind Loading @ Velocity, lateral	58.0 N @ 150 km/h (13.0 lbf @ 150 km/h)
Wind Loading @ Velocity, maximum	150.0 N @ 150 km/h (33.7 lbf @ 150 km/h)
Wind Loading @ Velocity, rear	58.0 N @ 150 km/h (13.0 lbf @ 150 km/h)
Wind Speed, maximum	241 km/h 149.75 mph

Packaging and Weights

Width, packed	300 mm 11.811 in
Depth, packed	320 mm 12.598 in
Length, packed	850 mm 33.465 in
Weight, gross	7.3 kg 16.094 lb

Regulatory Compliance/Certifications

Agency	Classification
CHINA-ROHS	Above maximum concentration value
ISO 9001:2015	Designed, manufactured and/or distributed under this quality management system
ROHS	Compliant/Exempted
UK-ROHS	Compliant/Exempted



* Footnotes

UU-360S-F

Performance Note

Severe environmental conditions may degrade optimum performance