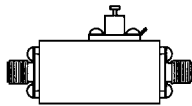
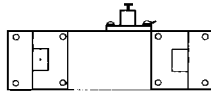


Wideband Millimeter Amplifiers: 26.5 to 40.0 GHz

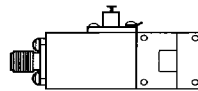
Case Types (See Section 5 for detailed case drawings.)



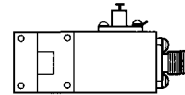
Coax



WR-28



Coax/WR-28



WR-28/Coax

AMT Series—High Performance Connectorized Amplifiers³

Guaranteed Specifications @ 25°C Case Temperature

Model	Frequency Response (GHz) Min.	Gain (dB) Min.	Gain (dB) Max.	Noise Figure (dB) Max.	Power Output for 1 dB Gain Compression (dBm) Min.	Gain Flatness (±dB) Max.	Typical Third Order Intercept Point (dBm)	VSWR (50 ohms) Maximum		Input Power Voltage (VDC) ¹	Input Power Current (mA) Max.	Case Type ²
								In	Out			
AMT-40074-XX	26.5-40	20	26	6.0	+10	1.5	+16	2.5	2.5	+12	170	IQ6
AMT-40076-XX	26.5-40	31	38	6.0	+10	2.5	+16	2.5	2.5	+12	250	IQ8
AMT-40077-XX	26.5-40	38	46	6.0	+10	3.0	+16	2.5	2.5	+12	300	IQ8

AMT Series —Temperature Compensated Connectorized Amplifiers³

Guaranteed Specifications @ -54° to +71°C Case Temperature

AMT-40086-XX	26.5-40	24	32	9.0	+6	2.5	+13	2.5	2.5	+12	325	IQ8
AMT-40087-XX	26.5-40	27	35	8.0	+6	3.0	+13	2.5	2.5	+12	375	IQ10
AMT-40088-XX	26.5-40	34	43	8.0	+6	3.5	+13	2.5	2.5	+12	425	IQ10

Notes:

1. Units contain internal voltage regulator and operate with +12 to +15 VDC.
2. For case drawings, refer to AMT-26XXX series, Section 5.
3. Maximum safe input power: +10 dBm