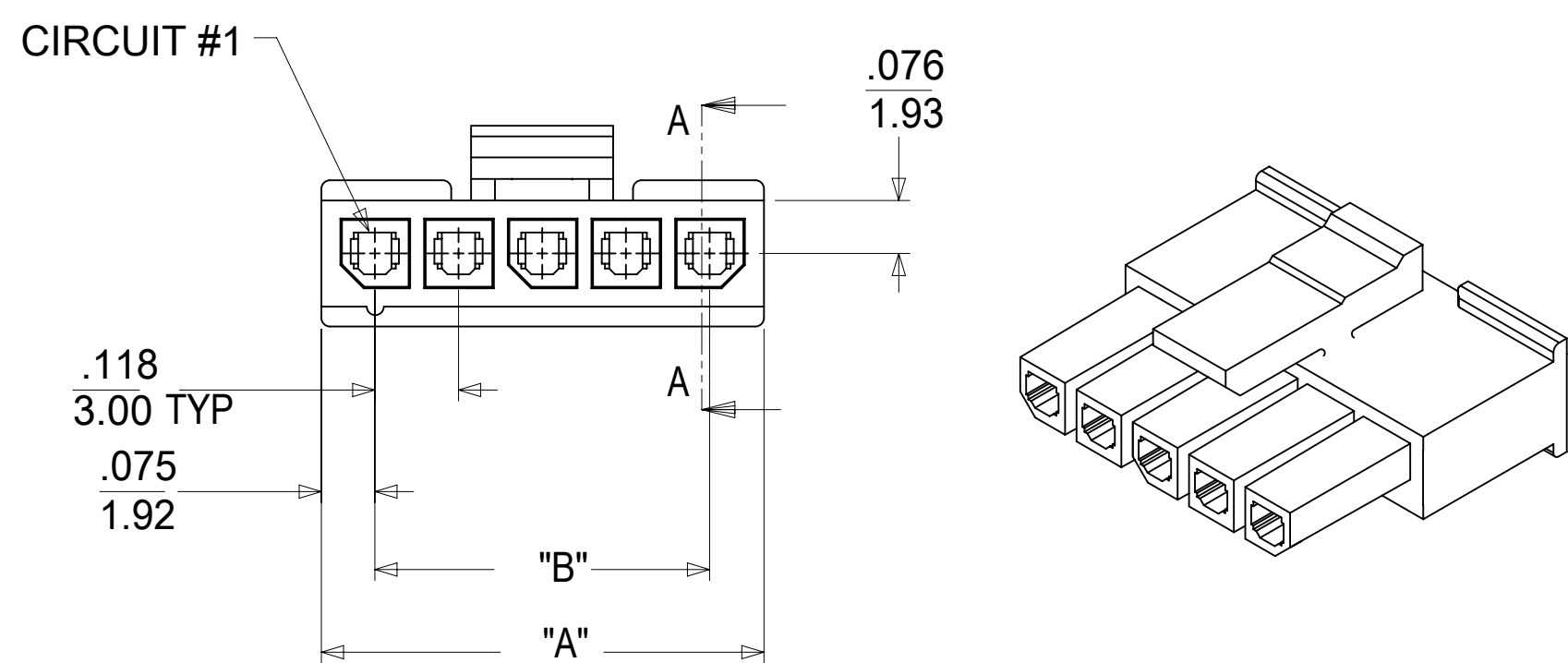
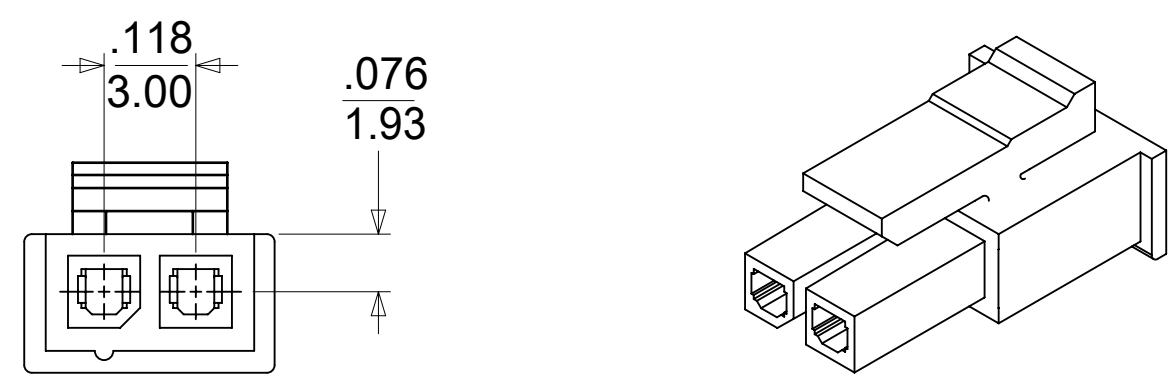
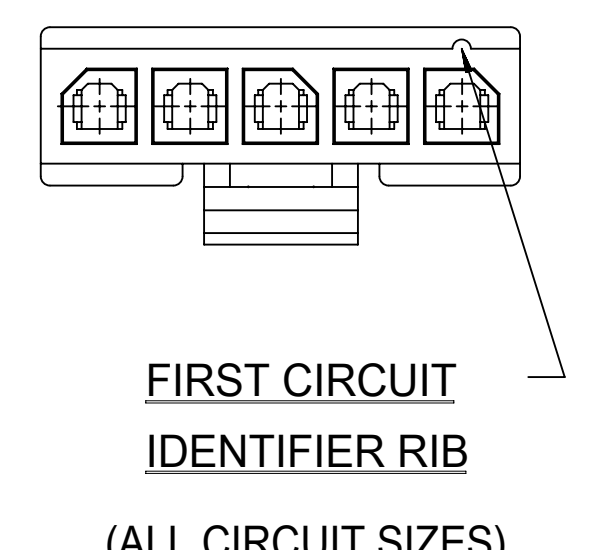


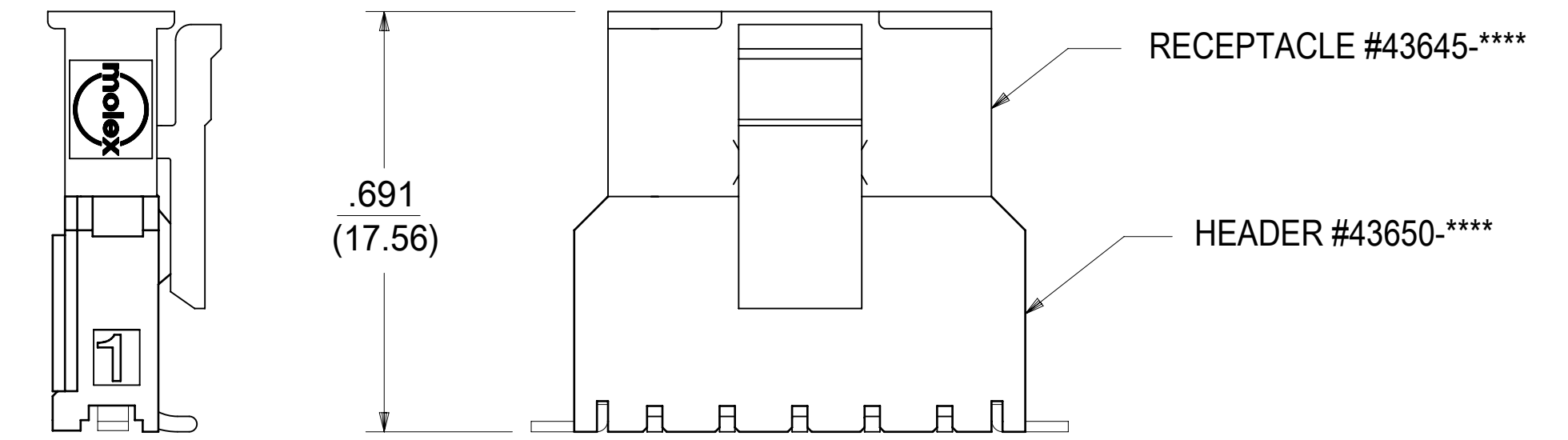
TOOLED	MATERIAL NUMBER	NUMBER OF CIRCUIT	DIM. "A"	DIM. "B"
YES	43645-0210	02	SEE DETAIL	.118/(3.00)
YES	43645-0310	03	.388/(9.85)	.236/(6.00)
YES	43645-0410	04	.506/(12.85)	.354/(9.00)
YES	43645-0510	05	.624/(15.85)	.472/(12.00)
YES	43645-0610	06	.742/(18.85)	.591/(15.00)
NO	43645-0710	07	.860/(21.85)	.709/(18.00)
NO	43645-0810	08	.978/(24.85)	.827/(21.00)
NO	43645-0910	09	1.096/(27.85)	.945/(24.00)
NO	43645-1010	10	1.215/(30.85)	1.063/(27.00)
NO	43645-1110	11	1.333/(33.85)	1.181/(30.00)
NO	43645-1210	12	1.451/(36.85)	1.299/(33.00)



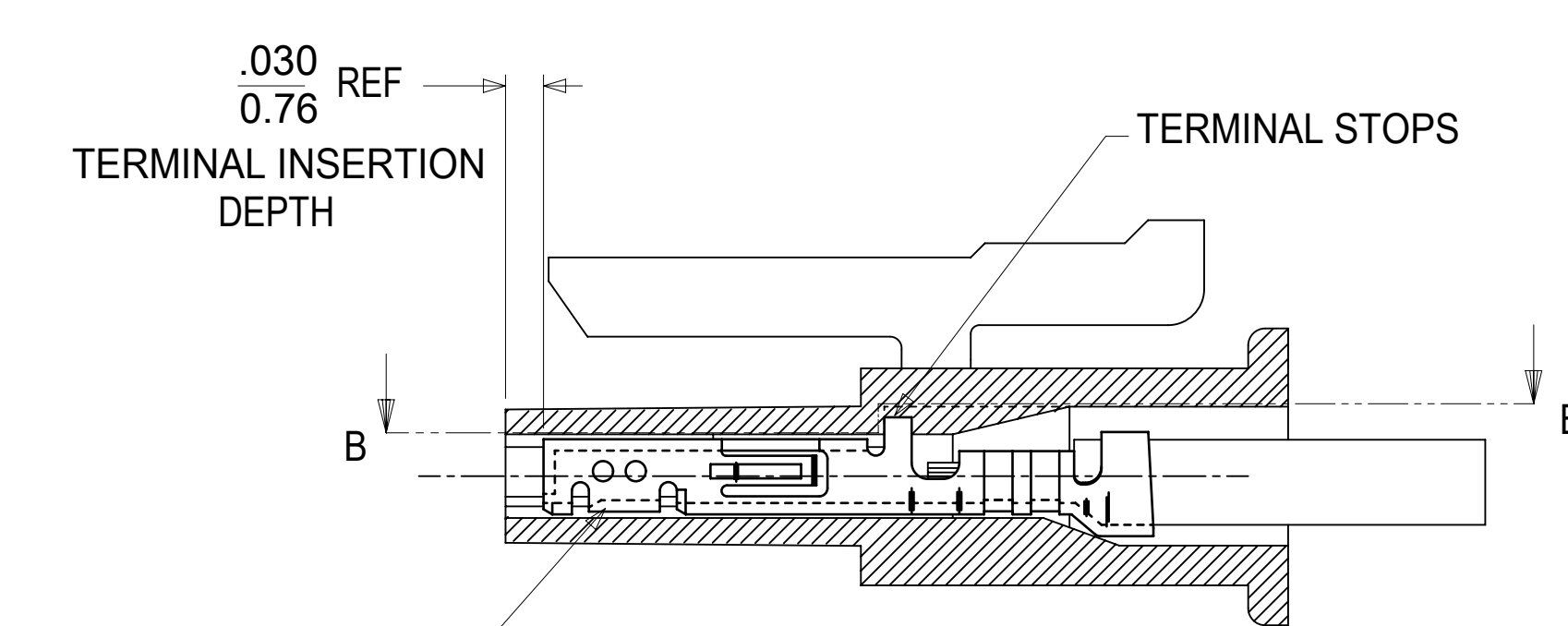
(3-12 CIRCUIT HOUSING)



(2 CIRCUIT HOUSING)

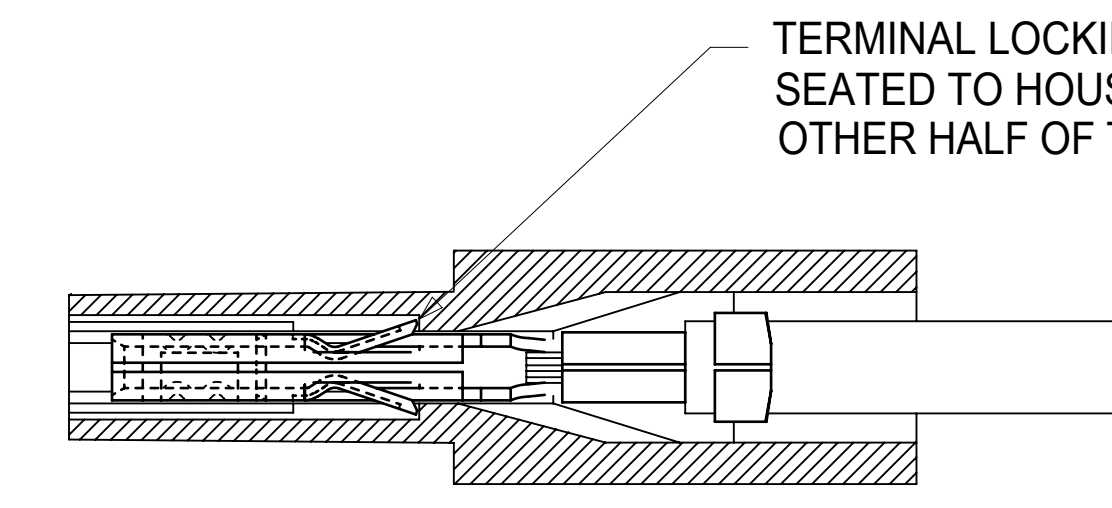


MATED MICRO-FIT CONNECTOR



SECTION "A"- "A"

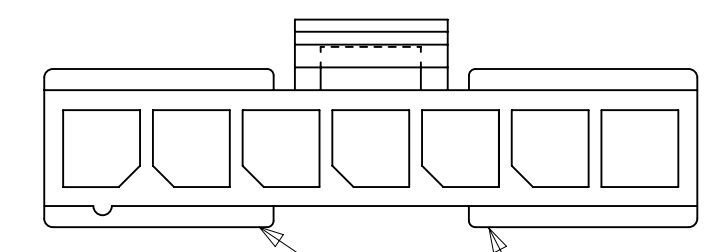
SHOWN WITH TERMINAL INSTALLED



SECTION "B"- "B"

NOTES:

1. MATERIAL : UNFILLED NYLON, UL94V-2, IEC 60335-1 GLOW WIRE CAPABLE, COLOR - BLACK. * MATERIAL NUMBERS ON THIS DRAWING ARE GLOW WIRE CAPABLE SINCE INCEPTION.
2. FINISH : N/A
3. PRODUCT SPECIFICATION : PS-43650
4. PACKAGING SPECIFICATION: PK-43645-001.
5. THIS RECEPTACLE TO BE USED WITH MOLEX FEMALE TERMINAL SERIES 43030 OR 46235. SEE SECTION "A"- "A" FOR TERMINAL ORIENTATION IN HOUSING.
6. FOR OVERMOLDING PARAMETERS SEE APPLICATION SPECIFICATON 430250000-AS.
7. THIS RECEPTACLE MATES WITH MOLEX PCB HEADER 43650 SERIES AND MOLEX PLUG 43640 SERIES (WIRE TO WIRE APPLICATIONS).
8. MOLEX RECOMMENDS THE USE OF MICRO-FIT TEST PLUG, SERIES 44242-**** WHENEVER CONTINUITY TESTING IS PERFORMED. TEST PLUGS MUST NOT BE USED TO MAKE OR BREAK UNDER LOAD. MOLEX DOES NOT RECOMMEND USING STANDARD MATING COMPONENTS FOR HARNESS TESTING PURPOSES.
9. THIS RIB IS DISCONTINUOUS ON CIRCUIT SIZES 7 THROUGH 12
10. THIS PART CONFORMS TO CLASS 'B' REQUIREMENTS OF COSMETIC SPECIFICATION PS-45499-002, WITH THE EXCEPTION OF FLASH, DISCOLORATION, AND SINK MEET CLASS "C" REQUIREMENTS.
11. HOUSINGS MAY HAVE DISCOLORATION AREAS THAT DO NOT AFFECT FUNCTIONALITY. DISCOLORATION AREAS MAY EXTEND ACROSS THE ENTIRE LENGTH OF THE FACES OF THE PART.
12. TEXT ON PART IS FOR REFERENCE ONLY. TEXT AND TEXT LOCATION MAY VARY DEPENDING ON PART NUMBER AND/OR TOOL.



SEE NOTE 9

SYMBOLS		THIS DRAWING CONTAINS INFORMATION THAT IS PROPRIETARY TO MOLEX ELECTRONIC TECHNOLOGIES, LLC AND SHOULD NOT BE USED WITHOUT WRITTEN PERMISSION		CURRENT REV DESC: UPDATE NOTE 6	
▽ = 0	IN/MM	SCALE		NTS	
▽ = 0	GENERAL TOLERANCES (UNLESS SPECIFIED)		EC NO: 168740		
▽ = 0	4 PLACES ±	MM	INCH	DRWN: AZAHIROVIC	2018/01/03
▽ = 0	3 PLACES ±	± 0.01		CHK'D: SSOUSEK	2018/06/01
▽ = 0	2 PLACES ±	0.25	± 0.014	APPR: FSMITH	2018/06/01
▽ = 0	1 PLACE ±	0.35	±	INITIAL REVISION:	
▽ = 0	0 PLACES ±	±		DRWN: JDFOX	2015/02/09
▽ = 0	ANGULAR TOL ± 0.5 °		APPR: FSMITH		2016/08/12
▽ = 0	DRAFT WHERE APPLICABLE MUST REMAIN WITHIN DIMENSIONS		THIRD ANGLE PROJECTION	DRAWING	SERIES
▽ = 0			⊕	D-SIZE	43645
DOCUMENT STATUS		P1	RELEASE DATE	2018/06/01	21:26:27
DOCUMENT NUMBER		DOC TYPE		DOC PART	REVISION
SD-43645-002		PSD	001	A3	
MATERIAL NUMBER		CUSTOMER		SHEET NUMBER	
SEE CHART		GENERAL MARKET		1 OF 1	