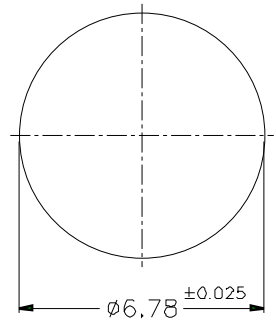
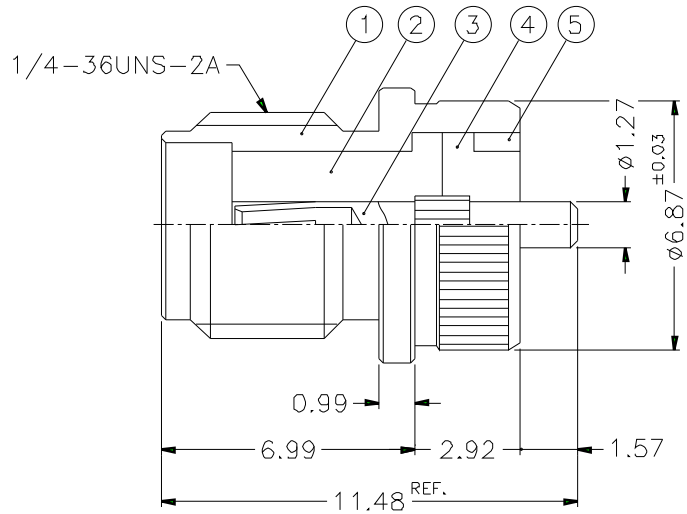


1			2			3			4			5			6			7			8		
REVISIONS																							
ISS	ZONE	DESCRIPTION\PER REQUEST\DATE																					



RECOMMENDED MOUNTING HOLE

- NOTES. FINISH (PLATING THICKNESS IN MICRO-INCHES)
1. STAINLESS STEEL PER QQ-S-764, TYPE 303
 2. PASSIVATED PER QQ-P-35
 3. BERYLLIUM COPPER PER QQ-C-530
 4. GOLD PL. 50 MIN. THICK OVER NICKEL PL. 100 MIN. THICK OVER COPPER STRIKE
 5. TEFLON MIL-P-1946B

DIMENSIONS ARE IN MILLIMETERS										PART NO.	
UNLESS OTHERWISE SPECIFIED TOLERANCES										SMA6051A1-006-S/PT50G-50	
0.5-6 = ±0.2										APPROVED	
6-30 = ±0.4										DATE	
30-120 = ±0.6										10-11-01'	
120-315 = ±1										CHECKED	
315-1000 = ±1.6										DATE	
1000-2000 = ±2.4										10-11-01'	
DRAWN										DATE	
10-11-01'											

5	RING	NOTE 1	NOTE 2	1	SMA7530-5-B
4	INSULATOR	NOTE 5	NATURAL	1	SMA7530-4T-50
3	CONTACT PIN	NOTE 3	NOTE 4	1	132264-3
2	INSULATOR	NOTE 5	NATURAL	1	SMA6051A1-004-2
1	BODY	NOTE 1	NOTE 2	1	SMA6051A1-004-1
NO.	DESCRIPTION	MATERIAL	FINISH	Q'TY	DRAWING NO.

<h1>Amphenol</h1>			
		TITLE	SMA PANEL RECEPT. JACK
		DRAWING NO.	KJ-SMA6051A1-006-S/PT50G-50
		ITEM NO.	

1	2	3	4	5	6	7	8
---	---	---	---	---	---	---	---