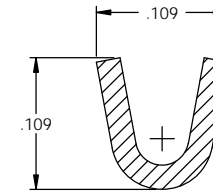
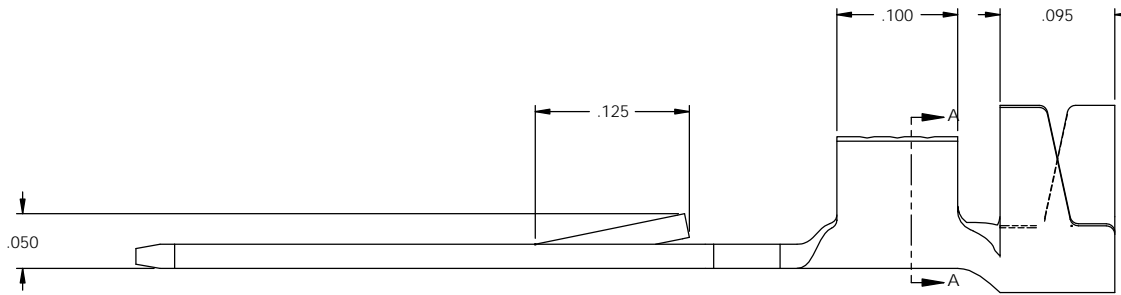
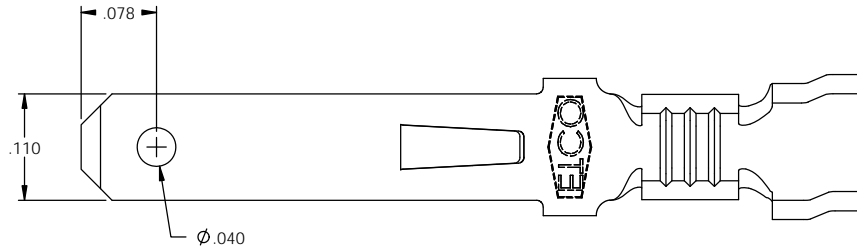
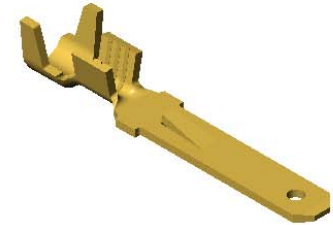


NOTES:

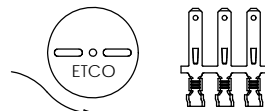
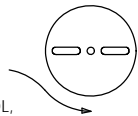
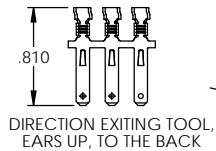
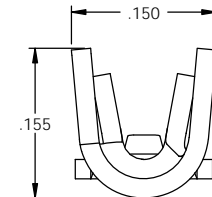
1. MATERIAL: .020 THICK, BRASS, #4 TEMPER (FULL HARD), PER ETCO METAL CODE 00403.
2. MATERIAL: .020 THICK, PRE-TINNED BRASS, #4 TEMPER, (FULL HARD), PER ETCO METAL CODE 001462.
3. PARTS MAY BE COATED WITH A LIGHT FILM OF LUBRICATION USED IN THE MANUFACTURING PROCESS.
4. WIRE RANGE: 22-18 AWG.
5. INSUL RANGE: \varnothing .055-.105

P/C	DESCRIPTION	MAT'L
07935	M62LL-HB	NOTE 1

Rev	Description of Change/ SCN#	Date
1	REDRAWN ON SOLIDWORKS NO CHANGES SCJ	7-30-08



SECTION A-A
SCALE 10 : 1



DIRECTION TOWARD APPLICATOR,
FROM LEFT, EARS UP, TO THE FRONT

THIS PRINT IS THE PROPERTY OF ETCO INCORPORATED. NO PART OF THIS DESIGN MAY BE USED IN ANY WAY WITHOUT WRITTEN CONSENT FROM ETCO INCORPORATED.

UNCONTROLLED COPY

<p>THIRD ANGLE PROJECTION TOLERANCES UNLESS OTHERWISE SPECIFIED INCHES: .XX - \pm.030 .XXX - \pm.015 ANGLES: \pm5°</p>	TOOL NO. 0138	Title: MALE LOCKING DISCONNECT	
	DO NOT SCALE DWG.	Drawn By: S. JOHNSON	Date: 7-30-08
<p>ETCO Incorporated Engineered Products 25 Bellows Street Warwick, RI 02888 Phone: (401) 467-2400 Fax: (401) 467-9230 www.ETCO.com</p>	Chk'd/App'd By:	Scale: 10X	Size B
	Dwg. No.:	M62LL cust	