



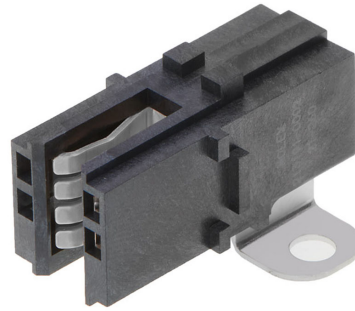
Part Number : [2131910002](#)

Product Description : PowerPlane Busbar Assembly, Small Size, Right-Angle, Screw Mount, 3.00mm and 3.18mm Bus Bar Thickness

Series Number : 213191

Status : Active

Product Category : PCB Headers and Receptacles



Documents & Resources

Drawings

[Drawing 2131910002_sd.pdf](#)

[Packaging Design Drawing 2131910002-PK-000.pdf](#)

3D Models and Design Files

[3D Model 2131910002_stp.zip](#)

[3D Model PDF 2131910002.pdf](#)

Specifications

[Application Specification 2131910001-AS-000.pdf](#)

[Product Specification 2131910001-PS-000.pdf](#)

Product Environment Compliance

Compliance

GADSL/IMDS	Not Relevant
China RoHS	
EU ELV	Not Relevant
Low-Halogen Status	Low-Halogen per IEC 61249-2-21
REACH SVHC	Not Contained per D(2023)3788-DC (14 Jun 2023)
EU RoHS	Compliant per EU 2015/863

Multiple Part Product Compliance Statements

- Eu RoHS
- REACH SVHC
- Low-Halogen

Multiple Part Industry Compliance Documents

- IPC 1752A Class C
- IPC 1752A Class D
- Molex Product Compliance Declaration
- IEC-62474
- chemSHERPA (xml)

EU RoHS Certificate of Compliance

Part Details

General

Status	Active
Category	PCB Headers and Receptacles
Series	213191
Description	PowerPlane Busbar Assembly, Small Size, Right-Angle, Screw Mount, 3.00mm and 3.18mm Bus Bar Thickness
Application	Power
Component Type	PCB Receptacle
Product Family	PowerPlane Busbar Power Connectors
Product Name	PowerPlane
UPC	195842395930

Agency

UL	E29179
----	--------

Electrical

Current - Maximum per Contact	130.0A
Voltage - Maximum	600V AC

Physical

Circuits (Loaded)	1
Circuits (maximum)	1
Color - Resin	Black
Durability (mating cycles max)	200
Flammability	94V-0

Glow-Wire Capable	No
Guide to Mating Part	No
Keying to Mating Part	None
Lock to Mating Part	None
Material - Metal	Copper Alloy
Material - Plating Mating	Silver
Material - Resin	Liquid Crystal Polymer
Net Weight	7.924/g
Number of Rows	1
Orientation	Right Angle
Packaging Type	Tray
PCB Locator	No
PCB Retention	Yes
Pitch - Mating Interface	N/A
Polarized to Mating Part	No
Polarized to PCB	Yes
Stackable	No
Temperature Range - Operating	-40° to +125°C
Termination Interface Style	Screw