

AN5764N

Horizontal picture position control IC for CRT monitor

Overview

The AN5764N is an IC for CRT monitor horizontal picture position control. The picture position can be controlled by DC voltage, and the adoption of fin-attached SIL 7-pin package contributes to the rationalization of monitor set.

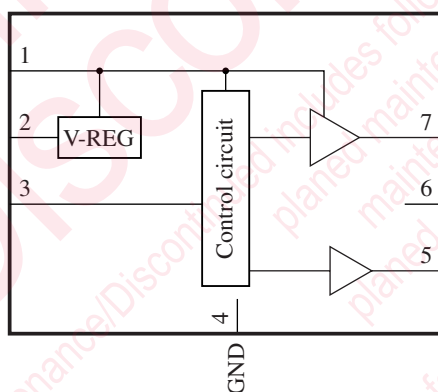
Features

- CRT monitor position control
- Built-in low voltage output circuit
- Built-in DC control circuit

Applications

- CRT monitor

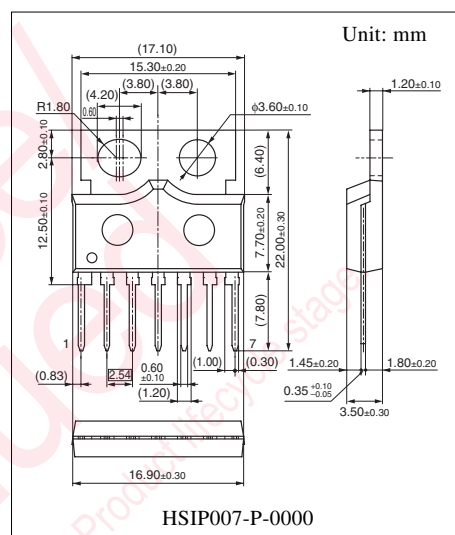
Block Diagram



Pin Descriptions

Pin No.	Description
1	V_{CC}
2	Constant voltage output (3 V)
3	Control input
4	GND
5	Out1 (Positive output)
6	N.C.
7	Out2 (Negative output)

Note) The fin is at the same potential as GND.



Note) The package of this product will be changed to lead-free type (HSIP007-P-0000B). See the new package dimensions section later of this datasheet.

■ Absolute Maximum Ratings

Parameter	Symbol	Rating	Unit
Supply voltage	V_{CC}	8.0	V
Supply current	I_{CC}	500	mA
Power dissipation *2	P_D	1 400	mW
Operating ambient temperature *1	T_{opr}	-20 to +75	°C
Storage temperature *1	T_{stg}	-55 to +150	°C

Note) *1: Except for the operating ambient temperature and storage temperature, all ratings are for $T_a = 25^\circ\text{C}$.

*2: The power dissipation shown is for the independent IC without a heat sink at $T_a = 75^\circ\text{C}$. (Refer to "■ Application Note".)

■ Recommended Operating Range

Parameter	Symbol	Range	Unit
Supply voltage	$V_{CC1, 2}$	5 to 7	V
Control input	V_{3-4}	0 to V_2	V
Out1 output maximum output current	I_{5max}	-400 to +400	mA
Out2 output maximum output current	I_{7max}	-400 to +400	mA
Constant voltage maximum output current	I_{2max}	-2.0 to +0.02	mA

Note) For the circuit currents, '+' denotes current flowing into the IC, and '-' denotes current flowing out of the IC.

■ Electrical Characteristics at $T_a = 25^\circ\text{C}$

Parameter	Symbol	Conditions	Min	Typ	Max	Unit
Circuit current pin 1	I_{CC1}	$V_{CC} = 5.5\text{ V}$, $V_3 = 1.5\text{ V}$ At load (R_L) = Open	7	14	28	mA
Circuit voltage pin 2	V_{2-4}	$V_{CC} = 5.5\text{ V}$, $V_3 = 1.5\text{ V}$ At load (R_L) = Open	2.8	3.0	3.2	mA
Circuit voltage pin 5	V_{5-4}	$V_{CC} = 5.5\text{ V}$, $V_3 = 1.5\text{ V}$ At load (R_L) = Open	2.3	2.6	2.9	V
Circuit voltage pin 7	V_{7-4}	$V_{CC} = 5.5\text{ V}$, $V_3 = 1.5\text{ V}$ At load (R_L) = Open	2.3	2.6	2.9	V
Circuit voltage pin 5-7	V_{5-7}	$V_{CC} = 5.5\text{ V}$, $V_3 = 1.5\text{ V}$ At load (R_L) = Open	-0.35	0.0	0.35	V
Out1 high-level output voltage	V_{5HI}	$V_{CC} = 5.5\text{ V}$, $V_3 = 3\text{ V}$ At $R_L = 7.5\ \Omega$ connection	4.2	4.5	4.7	V
Out1 low-level output voltage	V_{5LOW}	$V_{CC} = 5.5\text{ V}$, $V_3 = 0\text{ V}$ At $R_L = 7.5\ \Omega$ connection	1.3	1.8	2.3	V
Out2 high-level output voltage	V_{7HI}	$V_{CC} = 5.5\text{ V}$, $V_3 = 0\text{ V}$ At $R_L = 7.5\ \Omega$ connection	4.3	4.5	4.7	V
Out2 low-level output voltage	V_{7LOW}	$V_{CC} = 5.5\text{ V}$, $V_3 = 3\text{ V}$ At $R_L = 7.5\ \Omega$ connection	1.3	1.8	2.3	V
Output voltage difference min.	V_{5-7min}	$V_{CC} = 5.5\text{ V}$, $V_3 = 0\text{ V}$ At $R_L = 7.5\ \Omega$ connection	-3.2	-2.5	-2.2	V

■ Electrical Characteristics at $T_a = 25^\circ\text{C}$ (continued)


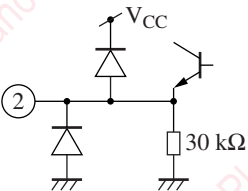
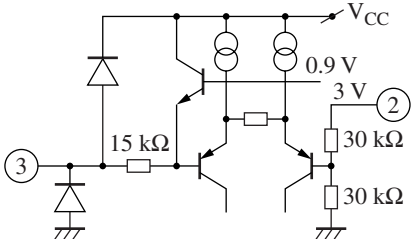
Parameter	Symbol	Conditions	Min	Typ	Max	Unit
Output voltage difference typ.	$V_{5-7\text{typ}}$	$V_{CC} = 5.5\text{ V}$, $V_3 = 1.5\text{ V}$ At $R_L = 7.5\ \Omega$ connection	-0.4	0.0	0.4	V
Output voltage difference max.	$V_{5-7\text{max}}$	$V_{CC} = 5.5\text{ V}$, $V_3 = 3\text{ V}$ At $R_L = 7.5\ \Omega$ connection	2.2	2.5	3.2	V

• Design reference data


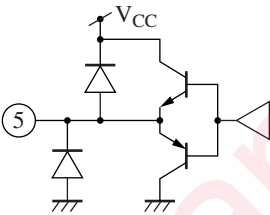

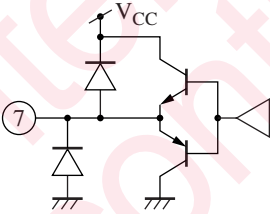
Note) The characteristics listed below are theoretical values based on the IC design and are not guaranteed.

Parameter	Symbol	Conditions	Min	Typ	Max	Unit
Control input pin circuit current max.	$I_{3\text{min}}$	Current of pin 3, at $V_{CC} = 5.5\text{ V}$, $V_4 = 0\text{ V}$	-100	-10	0	μA
Control input pin circuit current typ.	$I_{3\text{max}}$	Current of pin 3, at $V_4 = 0.5\text{ V}$ to 3 V	-50	-5	0	μA
Out1 maximum output current (Positive)	$I_{5\text{max}}$	Output current of pin 5, at $V_{CC} = 5.5\text{ V}$	300	—	400	mA
Out1 maximum output current (Negative)	$I_{5\text{min}}$	Output current of pin 5, at $V_{CC} = 5.5\text{ V}$	-400	—	-300	mA
Out2 maximum output current (Positive)	$I_{7\text{max}}$	Output current of pin 7, at $V_{CC} = 5.5\text{ V}$	300	—	400	mA
Out2 maximum output current (Negative)	$I_{7\text{min}}$	Output current of pin 7, at $V_{CC} = 5.5\text{ V}$	-400	—	-300	mA

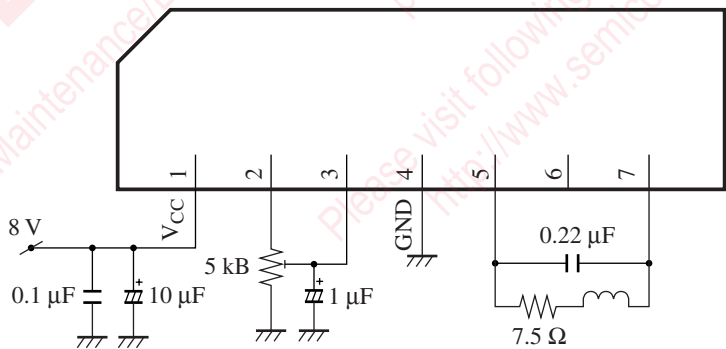
■ Terminal Equivalent Circuits

Pin No.	Equivalent circuit	Description
1		V_{CC} : Power supply pin DC 5.5 V (typ.) application
2		Constant voltage output: 3 V constant-voltage output DC 3 V
3		Control input: Input pin for control Output voltage balances at ($V_3 = \frac{1}{2} V_2$) 0 V to 3 V variable

■ Terminal Equivalent Circuits (continued)

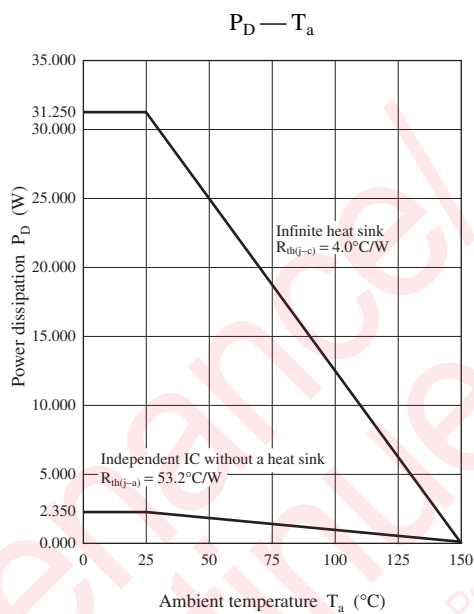
Pin No.	Equivalent circuit	Description
4		GND: GND (Earth) pin Fin becomes the same potential, too. 0 V
5		Out1 output: Output pin Outputs the same polarity as pin 3 control voltage DC 1.2 V to 4.3 V
6		N.C.: N.C. pin
7		Out2 output: Output pin Outputs the reverse polarity of pin 3 control voltage. DC 1.2 V to 4.3 V

■ Application Circuit Examples



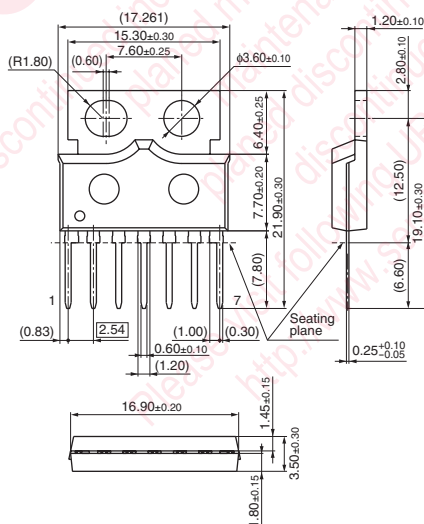
■ Application Note

- $P_D - T_a$ curve of HSIP007-P-0000



■ New Package Dimensions (Unit: mm)

- HSIP007-P-0000B (Lead-free package)



Request for your special attention and precautions in using the technical information and semiconductors described in this book

- (1) If any of the products or technical information described in this book is to be exported or provided to non-residents, the laws and regulations of the exporting country, especially, those with regard to security export control, must be observed.
- (2) The technical information described in this book is intended only to show the main characteristics and application circuit examples of the products, and no license is granted under any intellectual property right or other right owned by our company or any other company. Therefore, no responsibility is assumed by our company as to the infringement upon any such right owned by any other company which may arise as a result of the use of technical information described in this book.
- (3) The products described in this book are intended to be used for standard applications or general electronic equipment (such as office equipment, communications equipment, measuring instruments and household appliances).
Consult our sales staff in advance for information on the following applications:
 - Special applications (such as for airplanes, aerospace, automobiles, traffic control equipment, combustion equipment, life support systems and safety devices) in which exceptional quality and reliability are required, or if the failure or malfunction of the products may directly jeopardize life or harm the human body.
 - Any applications other than the standard applications intended.
- (4) The products and product specifications described in this book are subject to change without notice for modification and/or improvement. At the final stage of your design, purchasing, or use of the products, therefore, ask for the most up-to-date Product Standards in advance to make sure that the latest specifications satisfy your requirements.
- (5) When designing your equipment, comply with the range of absolute maximum rating and the guaranteed operating conditions (operating power supply voltage and operating environment etc.). Especially, please be careful not to exceed the range of absolute maximum rating on the transient state, such as power-on, power-off and mode-switching. Otherwise, we will not be liable for any defect which may arise later in your equipment.
 - Even when the products are used within the guaranteed values, take into the consideration of incidence of break down and failure mode, possible to occur to semiconductor products. Measures on the systems such as redundant design, arresting the spread of fire or preventing glitch are recommended in order to prevent physical injury, fire, social damages, for example, by using the products.
- (6) Comply with the instructions for use in order to prevent breakdown and characteristics change due to external factors (ESD, EOS, thermal stress and mechanical stress) at the time of handling, mounting or at customer's process. When using products for which damp-proof packing is required, satisfy the conditions, such as shelf life and the elapsed time since first opening the packages.
- (7) This book may be not reprinted or reproduced whether wholly or partially, without the prior written permission of Matsushita Electric Industrial Co., Ltd.