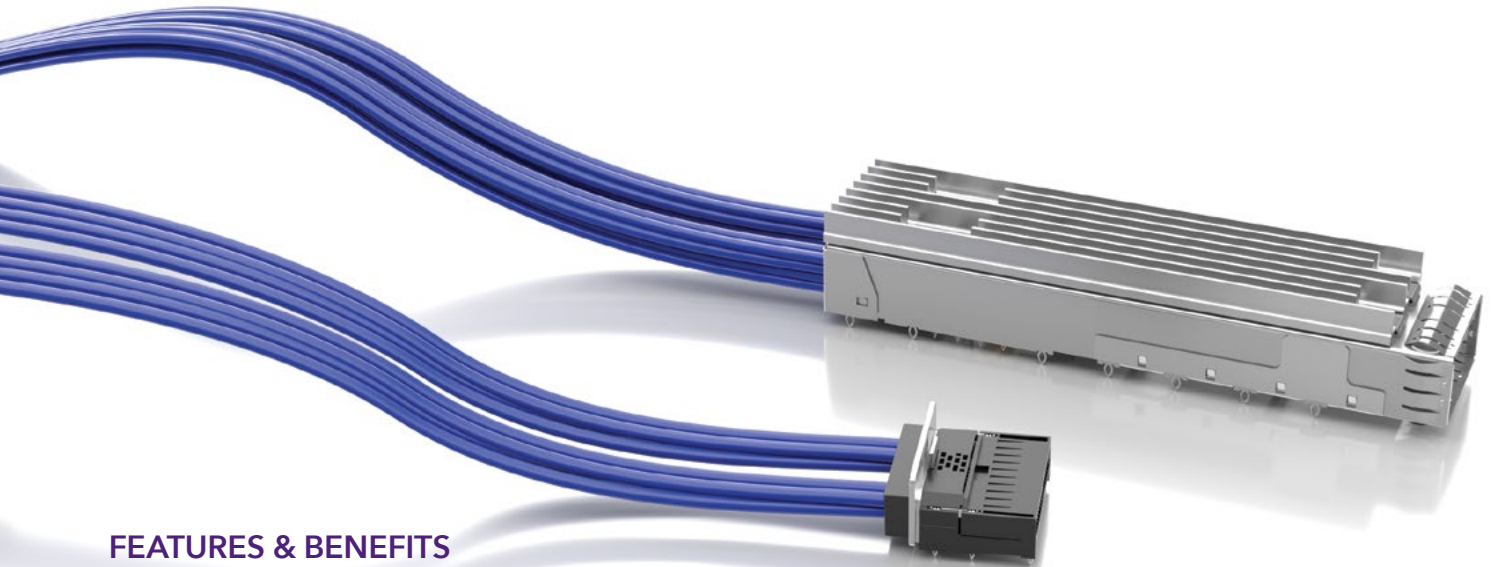


FLYOVER® QSFP CABLE ASSEMBLIES



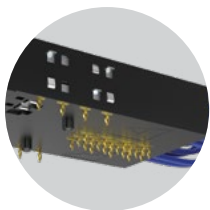
FEATURES & BENEFITS

QSFP28, QSFP-DD and QSFP-D8 systems utilize Samtec Flyover® technology to route data above lossy PCB, simplifying board layout and extending signal reach. The modular design enables optimized systems that improve heat management, increase signal integrity performance, build in scalability for future upgrades and reduces costs by creating a multifunction board.

NRZ	PAM4
56 Gbps	112 Gbps

FLYOVER® QSFP SYSTEM

- 4 Channels (x4 bidirectional, 8 differential pairs)
- Up to 400 Gbps aggregate (112 Gbps PAM4)
- Compatible with all MSA QSFP pluggables
- Multiple heat sink options available for optimal dissipation
- Eye Speed® 30 or 34 AWG twinax cable
- Multiple end 2 options for design flexibility
- Evaluation Kits available (REF-205303-X.XX-XX and REF-200471-X.XX-XX), visit samtec.com/kits



Localized press-fit control and power contacts eliminate the need for a secondary cable and connector



High-speed contacts directly soldered to Eye Speed® ultra low skew twinax

FLYOVER® QSFP DOUBLE DENSITY

- 8 Channels (x8 bidirectional, 16 differential pairs)
- Up to 400 Gbps aggregate (56 Gbps PAM4)
- Belly-to-belly mating for maximum density
- Backward compatible with QSFP modules
- Multiple heat sink options available for optimal dissipation
- Variety of end 2 options
- Evaluation Kits available (REF-205605-X.XX-XX and REF-203423-X.XX-XX), visit samtec.com/kits

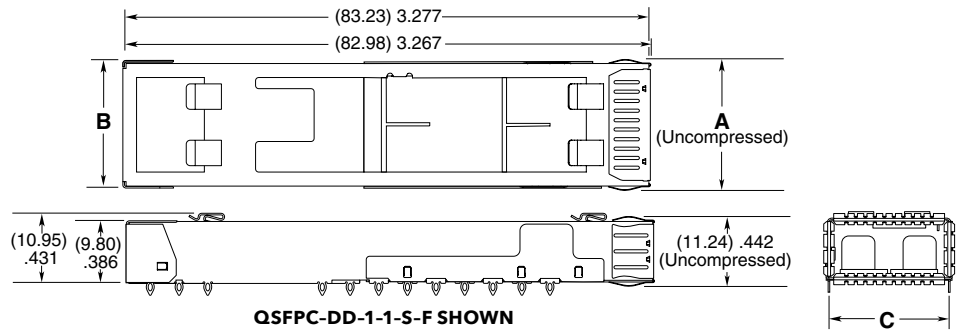
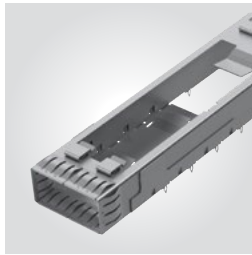
800G FLYOVER® DOUBLE DENSITY

- 8 Channels (x8 bidirectional, 16 differential pairs)
- Up to 800 Gbps aggregate (112 Gbps PAM4)
- Belly-to-belly mating for maximum density
- Backward compatible with QSFP & QSFP-DD modules
- Multiple heat sink options available for optimal dissipation
- Variety of end 2 options

CAGE & HEAT SINK FOR QSFP-DD

QSFP	DD	STACK	NO. OF PORTS	EMI PANEL OPTION	FLYOVER
		-1 =Single Stack	-1 = One Port -3 = Three Ports	-S = Spring Fingers	-F = Flyover

QSFP-DD



TOOLING

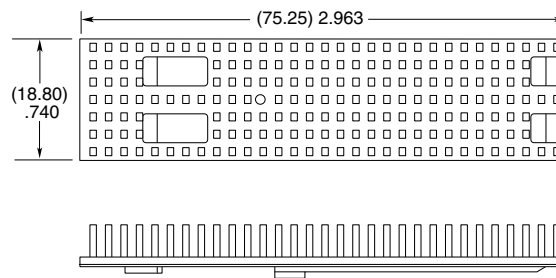
Press-fit: CAT-PT-QSFP-DD-02

NO OF PORTS	A	B	C
-1	(20.62) .812	(19.87) .782	(19.00) .748
-3	(58.62) 2.308	(57.87) 2.278	(57.00) 2.244

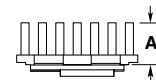
View complete specifications at: samtec.com?QSFP-DD

HS-QSFP	DD	HEAT SINK STYLE	HEAT SINK HEIGHT
		-P1 = Pin (Aluminum)	-1 = (4.20 mm) .165" height -2 = (6.50 mm) .256" height -3 = (13.50 mm) .531" height

HS-QSFP-DD



HEAT SINK HEIGHT	A
-1	(4.20) .165
-2	(6.50) .256
-3	(13.50) .531



View complete specifications at: samtec.com?HS-QSFP-DD

Note:
Some sizes, styles and options are non-standard, non-returnable.