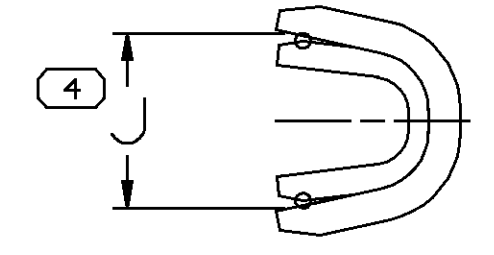
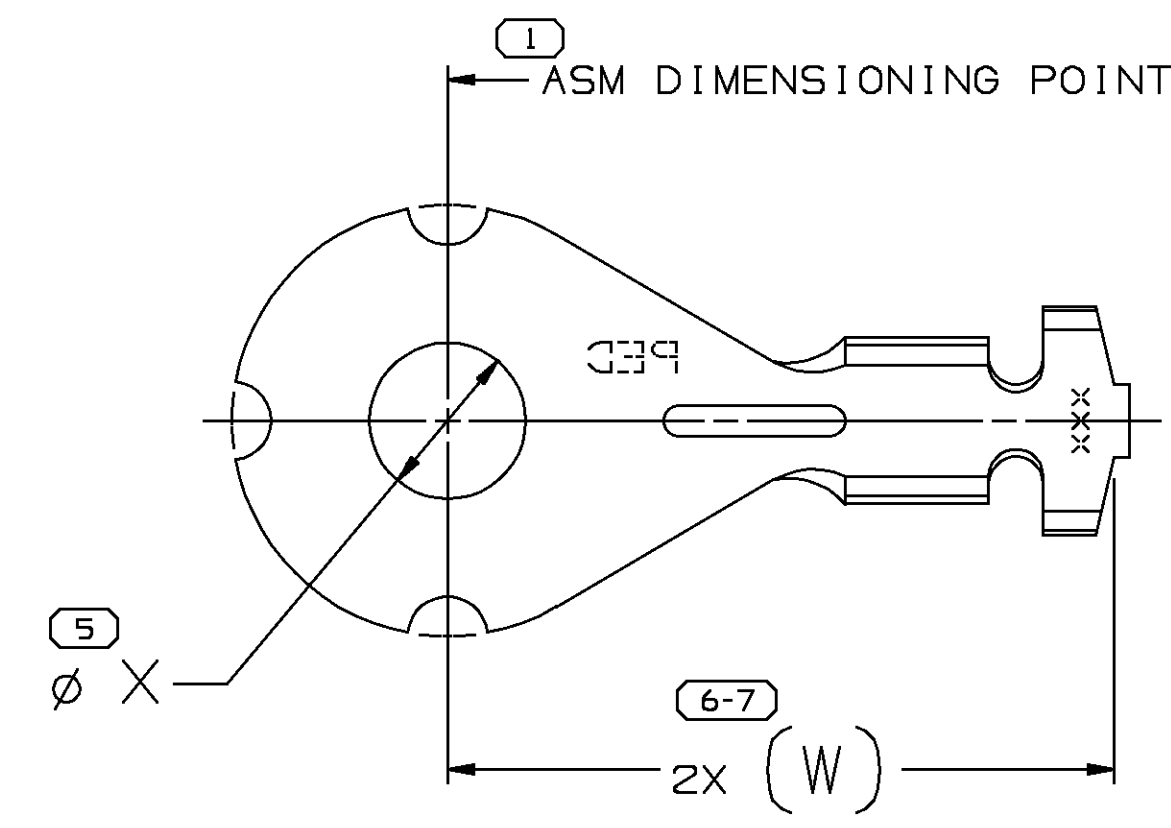
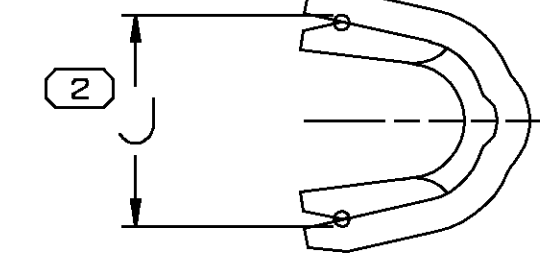


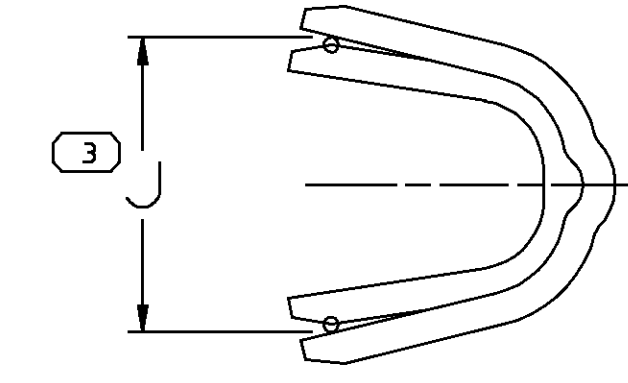
SYMBOL DEFINITION		MISSING NUMBERS		DWG STATUS			REVISION HISTORY			AUTH					
THE NUMBER INSIDE THE SYMBOL CORRESPONDS TO THE NUMBER ON THE INSPECTION REPORT FOR THIS DRAWING/PART NUMBER	TOTAL NO. OF SYMBOLS ON DRAWING	10	25	DATE	STG	REV	CHG	N/P	ZONE	DATE	STG	REV	CHG	N/P	ZONE
				28JUN99	R	001	-	-		CLEARED REV COLUMN: 12004796, 12004800, 12045818, 12047584, 12110398 & 12176670 - REVISED	195086	JHN	JHV	JF	
				28AUG99	R	002	-	-		12004797 & 12110398 - REVISED	196629	LMG	GGI	JF	
				06MAY00	R	003	-	-		15358955 - RELEASED	000005	EAH	FKV	JGK	
				04AUG00	R	004	-	-		15358955 - REVISED BARB CONSTRUCTION 4X 3.95±0.3 WAS 4X 3.65±0.3	202188	JHH	JHH	JF	



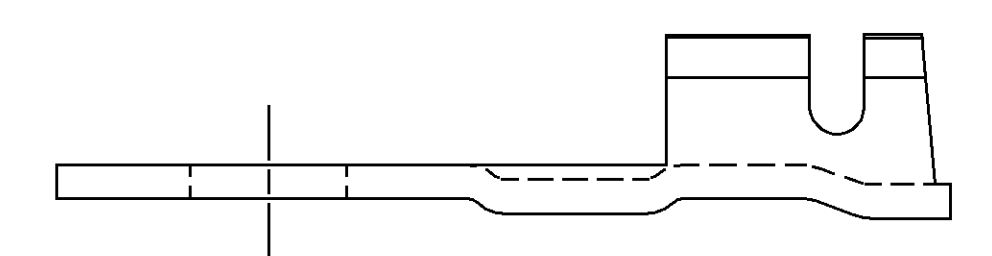
WING CONST I



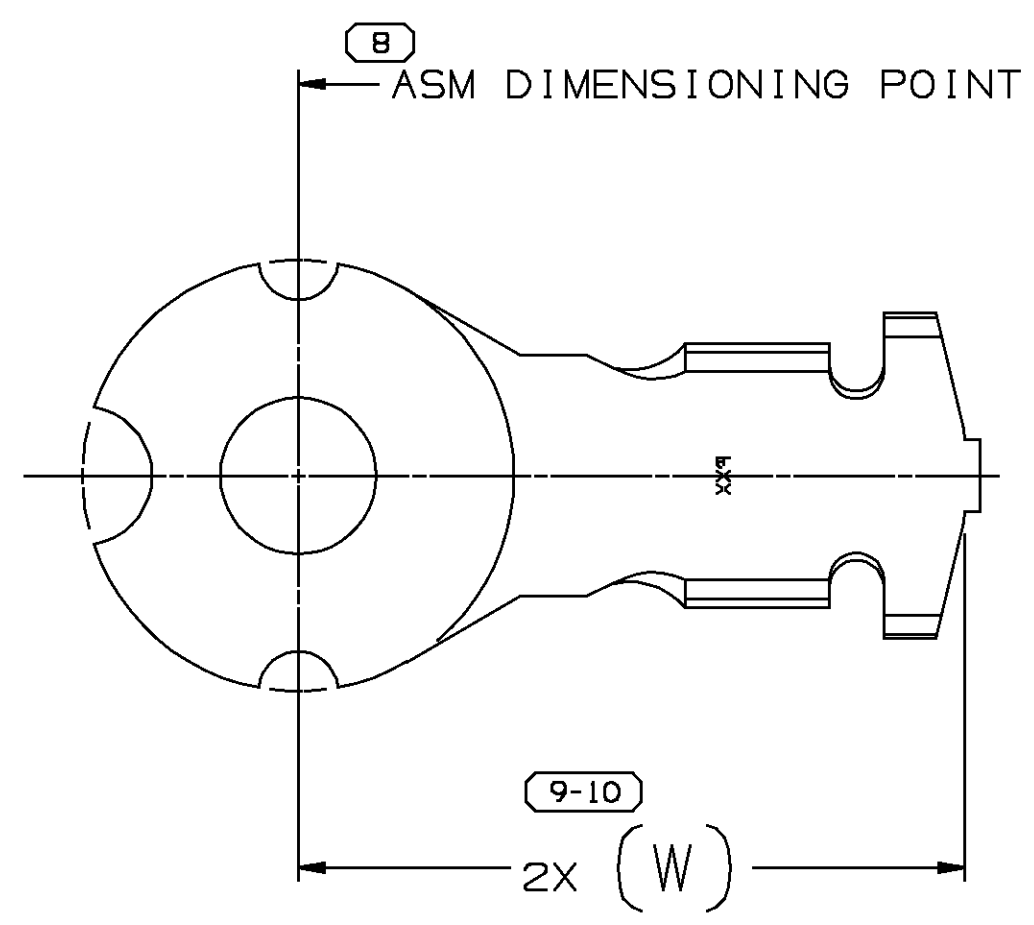
WING CONST II



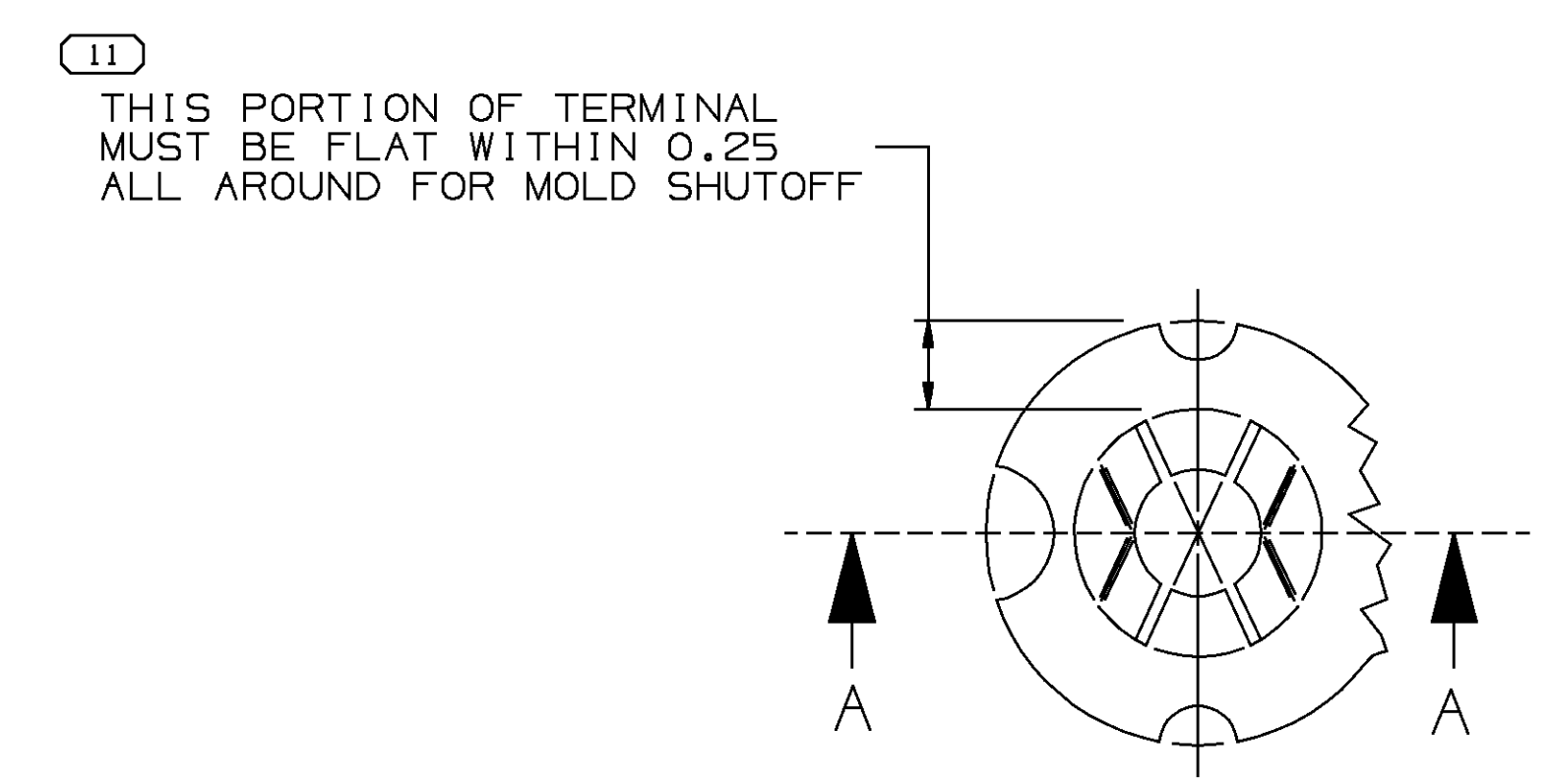
WING CONST III



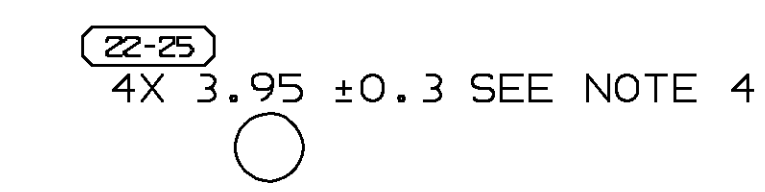
BEND ANGLE VIEW
(FOR 12176358)



OPTIONAL CONSTRUCTION



SECTION A-A
BARB CONST
SCALE 2:1



- NOTES
- UNLESS OTHERWISE SPECIFIED AND/OR INDICATED: DIMENSIONS ARE TO FACE OF VIEW SHOWN AND AUTOMATICALLY ROUNDED BY COMPUTER FOR INSPECTION. (SEE MATH MODEL FOR PRECISE DIMENSIONS.) FOR ALL OTHER DIMENSIONS NOT SHOWN BUT REQUIRED FOR TOOL BUILD, SEE MATH MODEL FOR PRECISE TOOL PATH DATA.
 - "PXX" INDICATES "P" PLUS LAST TWO DIGITS OF MAKE DIE SERIES NUMBER (P01, P02, P03, ETC.).
 - "▲" INDICATES MATERIAL AND/OR DIMENSION THAT PERTAINS TO OPTIONAL CONSTRUCTION.
 - ONE (1) BARB ALLOWED TO BE 3.25 MIN.

PART NO	STG	REV	N/P	STATUS	MAT'L SIZE	MAT'L SPEC	SIZE (MM²)	ID. CABLE	MAX DIA	WING CONST	STRIP ±0.3	DEDUCT ±0.3	W	J	X	BARBS
15358955	R	001	AA		2.13 X 63.5	PM001546 300 210 GILDING EX SPR	103	4/0	18.97	I	15.7	27.2	48.1	24.8±0.4	10.335±0.075	X
12176671	R	002	AA		2.13 X 33.3	PM001546 298 210 GILDING EX SPR	13	5	7.19	I	12.7	24.8	44.1	11±0.4	13.535±0.125	
12176670▲	R	003	-		2.13 X 63.5	PM001546 300 210 GILDING EX SPR	103	4/0	18.97	I	15.7	27.2	48.1	24.8±0.4	10.335±0.075	
12176358	R	002	AA		-	12047584	-	-	-	-	-	-	-	-	-	-
12110398▲	R	003	AA		2.13 X 47.6	PM001546 299 210 GILDING EX SPR	32	19	2	10.89	I	12.7	24.8	44.1	12.6±0.4	13.535±0.125
12092115	R	002	AA		2.13 X 63.5	PM001546 300 210 GILDING EX SPR	81	000	17.38	III	14.3	27.2	48.1	21.3±0.4	10.335±0.075	
12084825▲	R	004	-		2.13 X 47.6	PM001546 299 210 GILDING EX SPR	62	00	16 & *	I	12.7	24.8	44.1	19.3±0.4	10.335±0.075	
12047584▲	R	003	-		2.13 X 47.6	PM001546 299 210 GILDING EX SPR	62	00	16	I	12.7	24.8	44.1	19.3±0.4	13.535±0.125	
12045818▲	R	003	-		2.13 X 47.6	PM001546 299 210 GILDING EX SPR	50	0	12.82	I	12.7	24.8	44.1	16.9±0.4	13.535±0.125	
12045818	R	003	-		2.13 X 47.6	PM001546 299 210 GILDING EX SPR	50	0	12.82	I	12.7	24.8	44.1	16±0.4	13.535±0.125	
12004800▲	R	004	-		2.13 X 63.5	PM001546 300 210 GILDING EX SPR	103	4/0	18.97	I	15.7	27.2	48.1	24.8±0.4	10.335±0.075	
12004799	R	003	AA		2.13 X 63.5	PM001546 300 210 GILDING EX SPR	81	000	17.38	I	15.7	27.2	48.1	21.6±0.4	10.335±0.075	
12004798	R	002	-	OBSOLETE	2.13 X 47.6	PM001581 299 151 CU ALLOY HI COND	62	00	15.73	I	12.7	24.8	44.1	18.5±0.4	10.335±0.075	
12004797▲	R	004	-		2.13 X 47.6	PM001546 299 210 GILDING EX SPR	19	2	9.17 & 3.05	I	12.7	24.8	44.1	12.6±0.4	10.335±0.075	
12004796▲	R	004	-		2.13 X 47.6	PM001546 299 210 GILDING EX SPR	50	0	12.82	I	12.7	24.8	44.1	16.9±0.4	10.335±0.075	
12004796	R	004	-		2.13 X 47.6	PM001546 299 210 GILDING EX SPR	50	0	12.82	I	12.7	24.8	44.1	16±0.4	10.335±0.075	
12004795	R	003	AA		2.13 X 33.3	PM001546 298 210 GILDING EX SPR	32	19	3	10.89	I	12.7	24.8	44.1	13±0.4	10.335±0.075
12004791	R	003	AA		2.13 X 33.3	PM001546 298 210 GILDING EX SPR	13	5	7.19	I	12.7	24.8	44.1	11±0.4	10.335±0.075	

DELPHI
Automotive Systems

MATERIAL SPEC SEE CHART		DIMENSIONAL RANGE (MM) CHART D	
FROM	TO	D	> 12
TOLERANCE UNLESS OTHERWISE SPECIFIED		±0.1	±0.2
ANGULAR TOLERANCE ± 2°			

PART DRAWING

CODE NUMBER 6900,6901	DWG DATE 15NOV75	SCALE 2:1
OC SPEC	STYLE	VOLUME cm³

DISTR CODE
D

PART GEOMETRY PLANAR CHANGE RESTRICTED NO MANUAL CHANGES	UNLESS OTHERWISE SPECIFIED:		
	PERFECT FORM REQUIRED FOR FEATURES OF SIZE AT MMC. TRUE POSITION TOLERANCES AND RELATED DATUMS APPLY AT CONDITION OF SIZE INDICATED IN FEATURE CONTROL FRAME. ALL OTHER GEOMETRIC TOLERANCES AND RELATED DATUMS APPLY RFS. SEPARATE TRUE POSITION CALLOUTS MAY BE GAGED SEPARATELY, REGARDLESS OF DATUM REFERENCE.		
	COPY OF MATH DATA DO NOT SCALE	REFERENCE 001,701	DATE
	METRIC UNLESS OTHERWISE SPECIFIED, ALL DIMENSIONS ARE IN MILLIMETERS	DR	
	THIRD ANGLE PROJECTION	APVD1 C. RAMIREZ	14JN96
	APVD2 J. VAZQUEZ S.	17JN96	
	APVD3 R. STANG	26JN96	
	APVD4		
	APVD5		

TAXI TERM BATT STRIGHT RING

(5) PROCESS SENSITIVE DIMENSION	SHEET NUMBER	DRAWING NUMBER	DWG STATUS	SIZE
DIMENSIONS ENCLOSED IN () INDICATE REFERENCE DIMENSIONS AND NO TOLERANCE LIMITS ARE ESTABLISHED	1 OF 1	12004786	R 004	A0