

Adjustable Type Coils S Type Series

Coils, Filters

S4-S

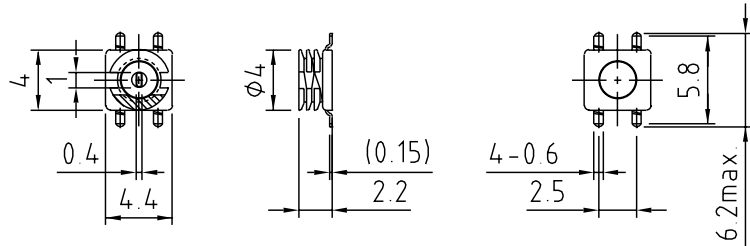


Specifications

- (1) 0.03~1 μ H
- (2) 30~200MHz
- (3) F: \pm 1.5%
L: \pm 3%
- (4) -
- (5) 40~60

Features

- SMD
- 1000pcs./Reel



S4-S2

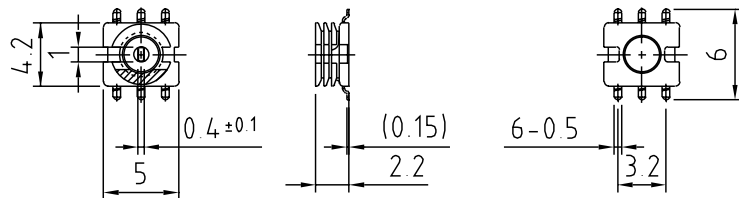


Specifications

- (1) 0.03~1 μ H
- (2) 30~200MHz
- (3) F: \pm 1.5%
L: \pm 3%
- (4) -
- (5) 40~60

Features

- SMD
- 1000pcs./Reel



S5-C

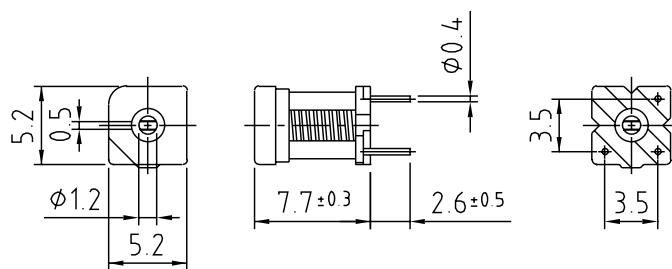


Specifications

- (1) 0.02~0.2 μ H
- (2) 30~200MHz
- (3) L: \pm 3%
- (4) -
- (5) 50~130

Features

- Ferrite or aluminium core used
- Can be used also shielded case.



S7-T4

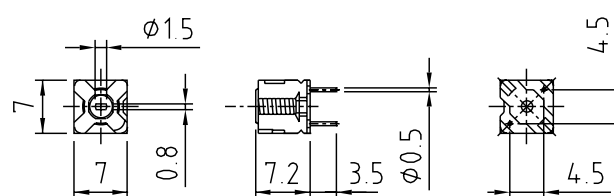


Specifications

- (1) 0.03~0.25 μ H
- (2) 20~200MHz
- (3) F: \pm 2%
L: \pm 4%
- (4) -
- (5) 60~100

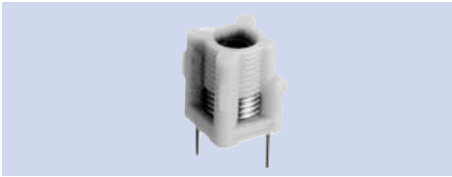
Features

- Ferrite or aluminium core used.
- Can be used also shielded case.



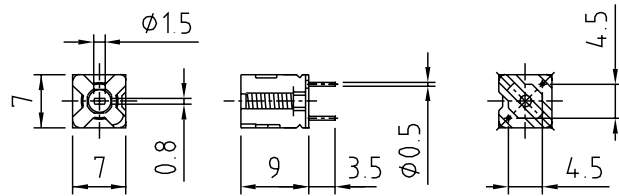
- (1) Inductance
- (2) Operational frequency
- (3) Variable range of F & L
- (4) Internal capacitance
- (5) Unloaded Q

S7-T3



Specifications
 (1) 0.03~0.5 μ H
 (2) 20~200MHz
 (3) F: \pm 2%
 L: \pm 5%
 (5) 60~120

Features
 Ferrite or aluminium core used.
 Can be used also shielded case.

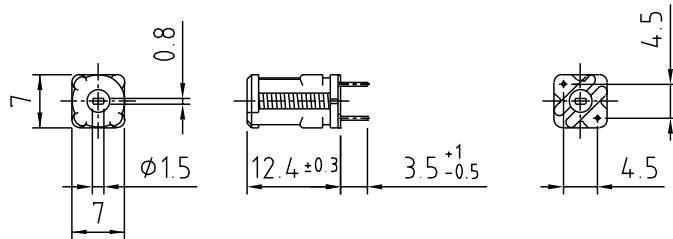


S7-M



Specifications
 (1) 0.03~0.7 μ H
 (2) 20~200MHz
 (3) L: \pm 5%
 (5) 100~180

Features
 Ferrite or aluminium core used.
 Can be used also shielded case.

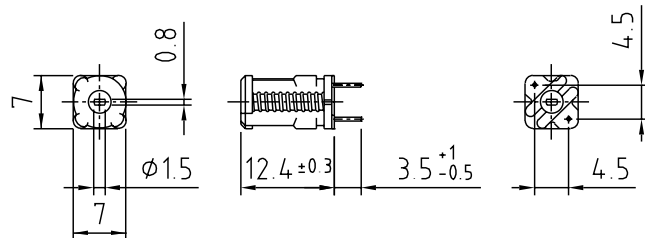


S7-M1



Specifications
 (1) 0.03~0.3 μ H
 (2) 20~200MHz
 (3) L: \pm 5%
 (5) 100~180

Features
 Ferrite or aluminium core used.
 Can be used also shielded case.



- (1) Inductance
- (2) Operational frequency
- (3) Variable range of F & L
- (4) Internal capacitance
- (5) Unloaded Q