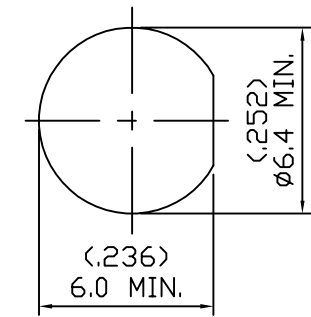
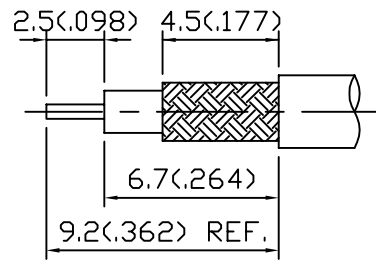
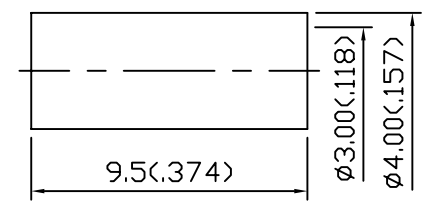
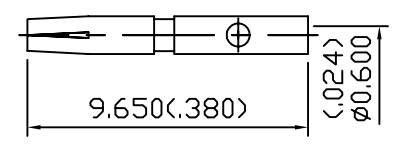
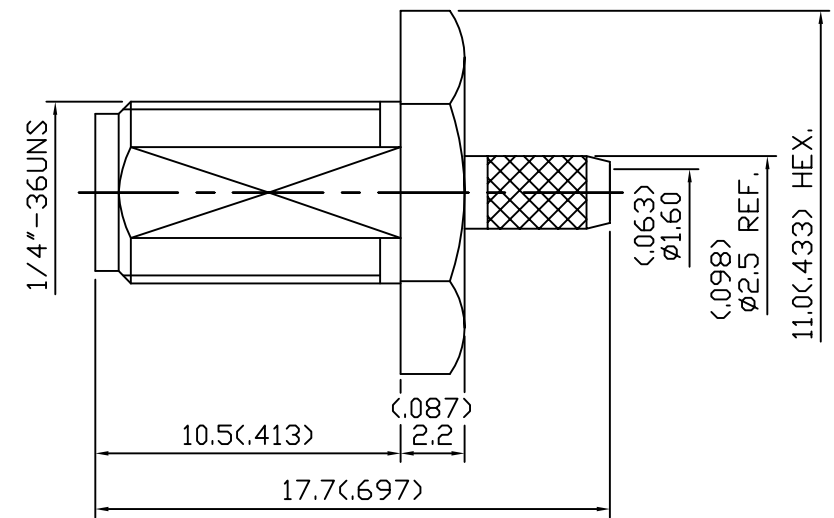
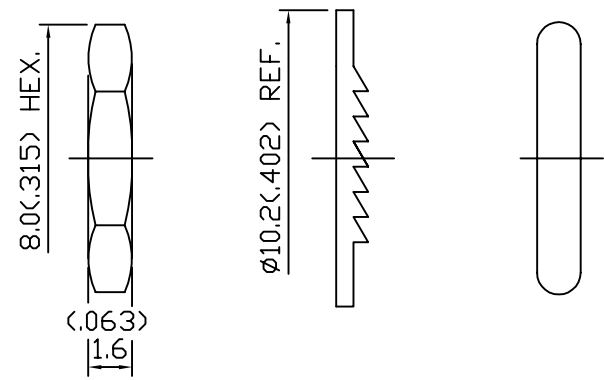


DRAWING REVISIONS			
REV	DOCUMENT	APP	DATE
2	PRELIM.		



MOUNTING HOLE

NOTES:
 1. SPECIFICATIONS:
 MATERIALS:
 BODY, FERRULE, WASHER AND NUT: BRASS
 PLATING: GOLD 3 MICRO INCHES MIN.
 CENTER CONTACT: Be Cu
 PLATING: GOLD 50 MICRO INCHES MIN.
 INSULATOR: TEFLON
 O-RING: SILICONE

ELECTRICAL

IMPEDANCE: 50 Ohms
 FREQUENCY RANGE: 0 TO 18 GHz
 WORKING VOLTAGE: <= 335V rms
 INSULATION RESISTANCE: >= 5000 MOhms
 CONTACT RESISTANCE:
 CENTER CONTACT: 3 MILLI Ohms MAX.
 OUTER CONTACT: 2 MILLI Ohms MAX.

MECHANICAL:

DURABILITY: 500 MATING CYCLES.
 OPERATING TEMPERATURE: -65°C TO 165°C.
 CONNECTOR INTERFACE PER MIL-STD-348A

2. ALL DIMENSIONS ARE IN MM AND DIMENSIONS IN () ARE IN INCHES.

CINCH PART NO.	CINCH CATALOG NO.
299 99 00 440	SMA50-8201

UNITS METRIC		AUTOCAD		Cinch	1700 FINLEY RD LOMBARD, IL. 60148
DO NOT SCALE DRAWING	DRAWN BY A.BALI	DATE 04/28/03	TITLE SMA SOCKET/JACK/STRA CABLE 50 Ohms.		
UNLESS OTHERWISE SPECIFIED, DIMENSIONS ARE IN MILLIMETERS	DESIGN ENGINEER A.BALI	04/28/03	MATERIAL SEE NOTE		CONTROL SPEC NUMBER
FILLET/RADIUS 0.50 MAX.	DESIGN ENGINEERING MGR.		MATERIAL SPEC NUMBER	FINISH	PROJECT NUMBER C14526
TOLERANCES AND LIMITS APPLY OVER ADDITIVE FINISH	MFG. ENGINEERING		CAD FILE NUMBER SMA50-8201	DRAWING NUMBER SMA50-8201	
THIS DOCUMENT IS THE PROPERTY OF CINCH. NEITHER THIS DOCUMENT NOR ANY OF THE INFORMATION CONTAINED IN IT MAY BE DUPLICATED OR DISCLOSED WITHOUT PRIOR WRITTEN CONSENT OF CINCH.	QUALITY ASSURANCE		CAGE IDENT NO. 71785	SIZE B	SCALE NTS
					SHEET 1 OF 1