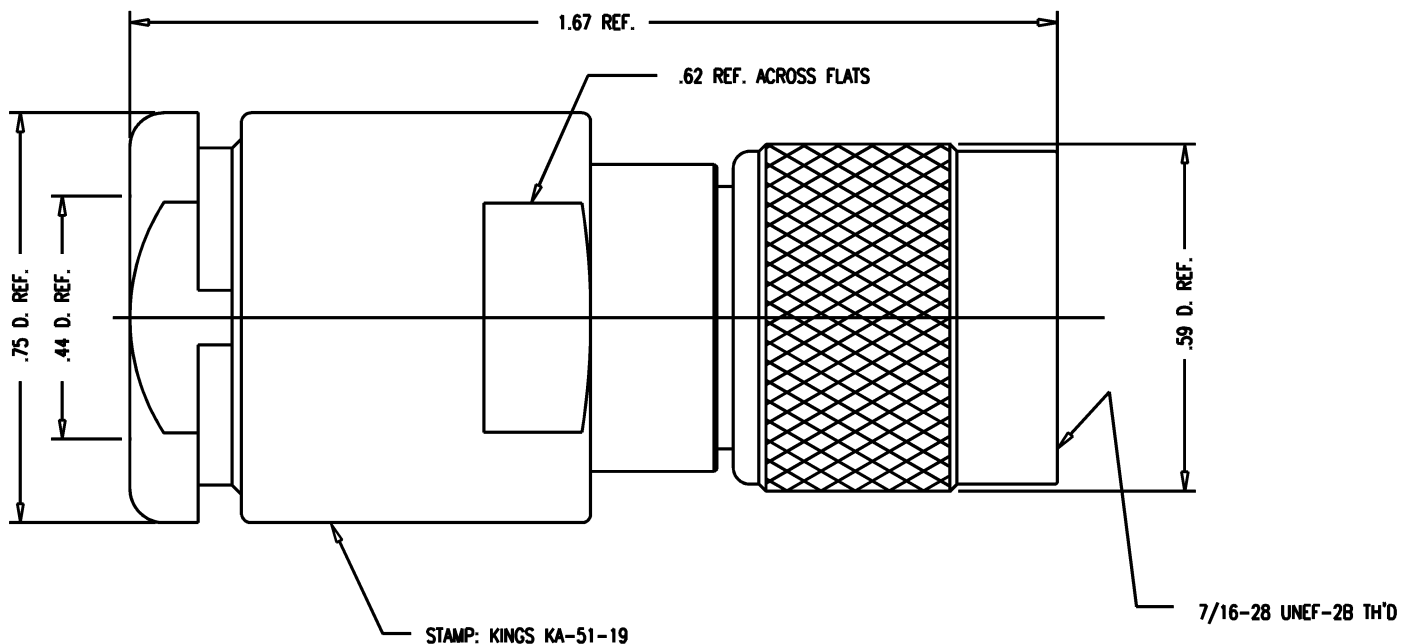


DASH NO.	M CODE	MADE FROM
----------	--------	-----------

SD

KA-51-19

REVISIONS	
ISSUE	CHANGES
0	ER 6378 AME 09/09/68
1	CN 7564 C RWV 05/28/98
2	CN 12197 A JGL 04/30/73
3	CN 15773 A JHP 05/04/76
4	CN 25098 C GL 09/08/83



NOTES:

- FOR USE WITH RG-8, 9, 213, 214 & 225/U CABLE GROUPS.
- FOR CABLING INSTRUCTIONS SEE CP-1005.
- MATERIALS:  
 INSULATORS: TEFLON, ASTM-D-1457  
 GASKETS: SIL. RUB., ZZ-R-765  
 OUTER CONTACT: BER. COP., ASTM-B-196  
 ALL OTHER PARTS: BRASS, QQ-B-626
- FINISHES:  
 ALL METAL PARTS: SILVER PLT. PER QQ-S-365
- ELECTRICAL CHARACTERISTICS:  
 NOMINAL IMPEDANCE: 50 OHMS  
 VOLTAGE RATING: 500 VRMS  
 FREQUENCY RANGE: DC TO 11 GHz
- INTERFACE PER MIL-STD-348, FIG. 313.1.

SCALE	4:1	
APPROX SURFACE AREA		
USED ON		
REF:		
TNC PLUG		
DRAWN	VLS	DATE 09/02/98
DESIGN	VLS	DATE 09/02/98
APPR.	VLS	DATE 09/02/98

**KINGS**  
ELECTRONICS CO., INC.  
TUCKAHOE, NEW YORK 10707

KA-51-19

SD