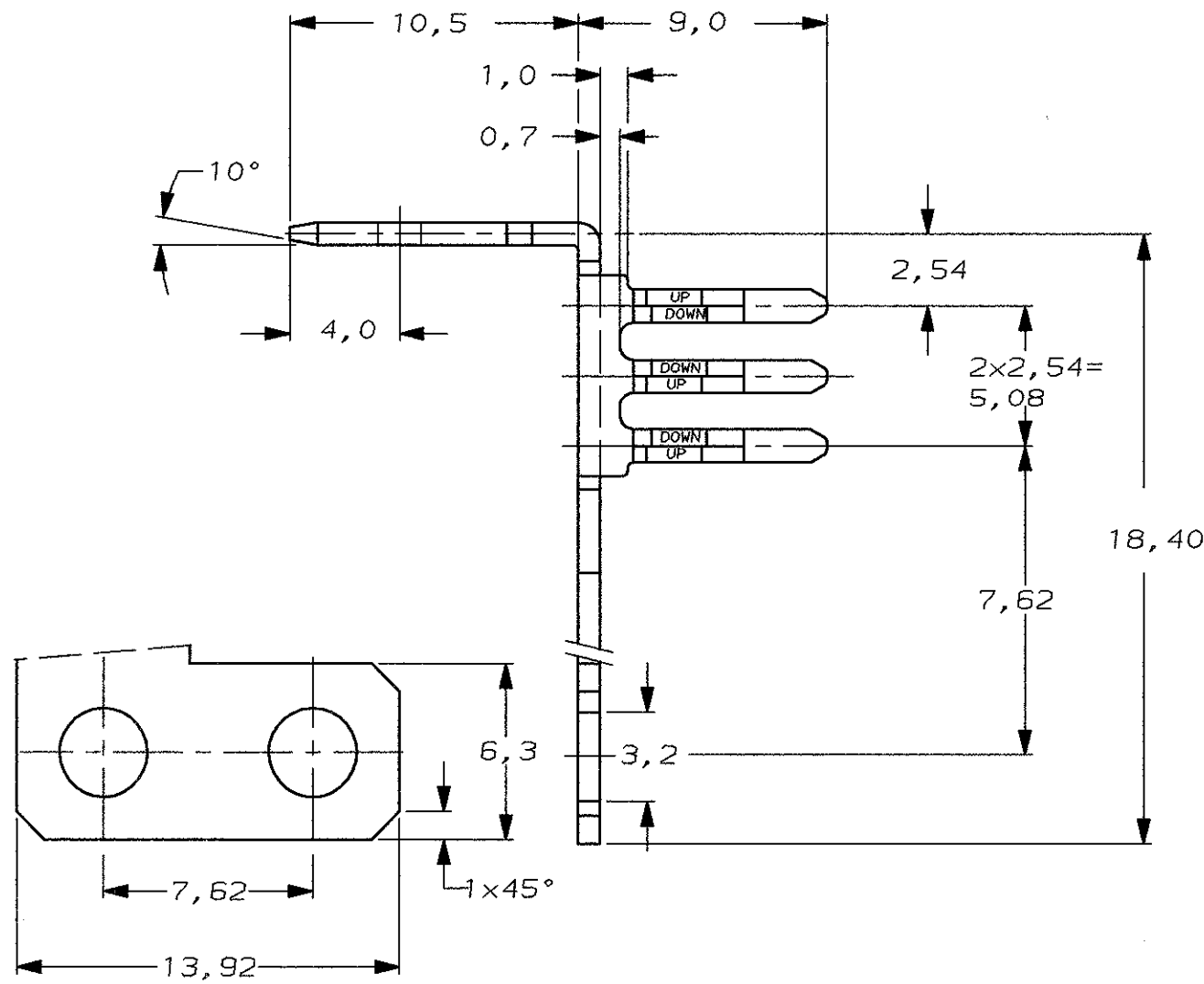
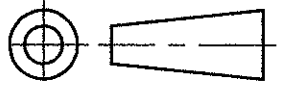


DO NOT SCALE

DIMENSIONS IN mm

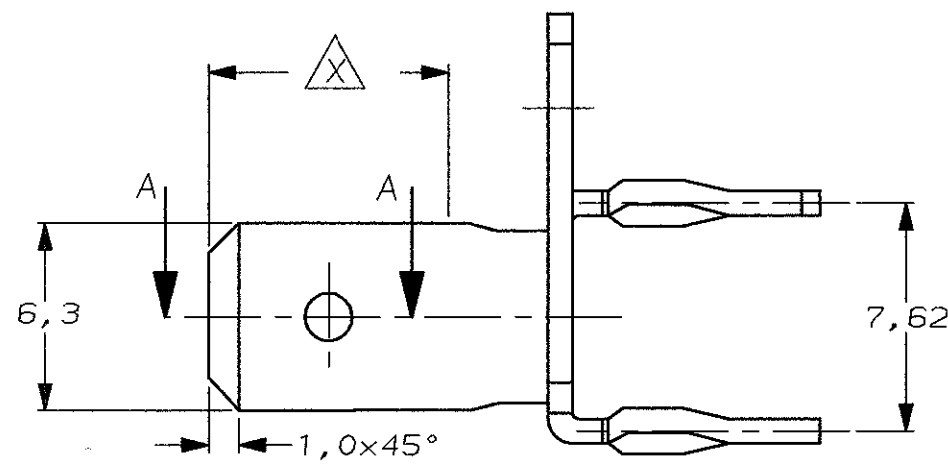
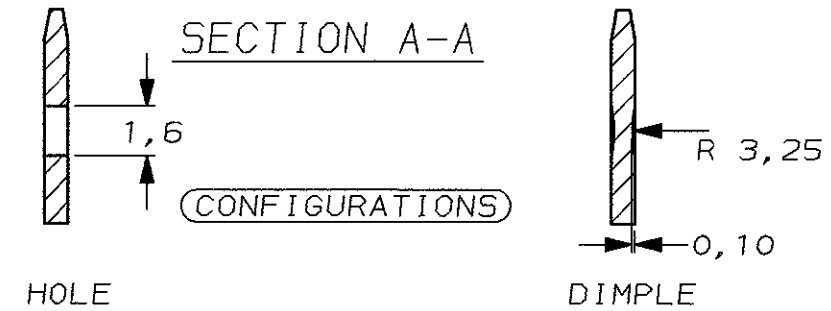
METRIC

THIRD ANGLE
PROJECTION



NOTES:

- ① PHOSPHORBRONZE.
- ② AT AREA ③ 5,0 μm Sn/Pb 93/7 MIN., UNDERCOATING 1,25μm NI MIN.
- ③ 5,0 μm Sn/Pb 93/7 MIN. ALL OVER, UNDERCOATING 1,25μm NI MIN.
- ④ QUANTITY PER PACKAGE 2000 PCS.



PLATED THROUGH HOLE SPECIFICATION	
DRILLED HOLE	1,6 ±0,025
Cu- THICKNESS	25-75 μm
SnPb-THICKNESS	4-10 μm
FINISHED HOLE	1,39 ^{+0,15} ₋₀
FINISHED HOLE (AFTER REFLOW)	1,36 ^{+0,18} ₋₀

DIMPLE	④②	①	1-215512-2
HOLE	②	①	215512-7
HOLE	③	①	215512-6
-			-
DIMPLE	③	①	215512-3
DIMPLE	②	①	215512-2
CONFIGURATION	FINISH	MATERIAL	PARTNUMBER

CUSTOMER DRAWING FOR REFERENCE ONLY WILL NOT BE UPDATED
 © COPYRIGHT 19- BY AMP HOLLAND B.V.
 ALL INTERNATIONAL RIGHTS RESERVED. AMP PRODUCTS MAY BE COVERED BY U.S. AND FOREIGN AND/OR PATENTS PENDING.
 THIS DRAWING IS UNPUBLISHED
 RELEASED FOR PUBLICATION _____, 19____

AMP AMP HOLLAND B.V.
 's-Hertogenbosch, The Netherlands.

C	EH-0099-92	S.M.	-	15-01-93
LTR.	REVISION RECORD	DR.	CHK.	DATE
DR.:	S.Meeuwsen	CHK.:	R.v.Lokven	APP.:
DATE:	15.01.93	DATE:	22.01.93	DATE:
				L.v.Soest

NAME 6 POS. POWER LINKING TERMINAL WITH ACTION PIN (RIGHT HANDED VERSION)

DWG.No.	215512	REV.LTR.	C	SHEET	1 OF 1	A3
---------	--------	----------	---	-------	--------	----