



Partly Order Discontinued as of August 31, 2011



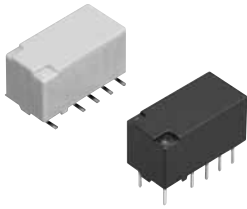
Panasonic

ideas for life

Small size, controlled 7.5A
inrush current possible

TX RELAYS

TH types



Compliance with RoHS Directive

FEATURES

- Small size, controlled 7.5A inrush current possible**
- 2,000 V breakdown voltage between contact and coil**
The body block construction of the coil that is sealed at formation offers a high breakdown voltage of 2,000 V between contact and coil, and 1,000 V between open contacts.
- Outstanding surge resistance.**
Surge breakdown voltage between open contacts:
1,500 V 10×160μ sec. (FCC part 68)

- Surge breakdown voltage between contact and coil:
2,500 V 2×10μ sec. (Bellcore)
- Nominal operating power: High sensitivity of 140mW**
By using the highly efficient polar magnetic circuit "seesaw balance mechanism", a nominal operating power of 140 mW (minimum operating power of 79 mW) has been achieved.
 - High contact capacity: 2 A 30 V DC**
 - Compact size**
15.0(L) × 7.4(W) × 8.2(H) .591(L) × .291(W) × .323(H)
 - Outstanding vibration and shock resistance.**
Functional shock resistance: 750 m/s²
Destructive shock resistance: 1,000 m/s²
Functional vibration resistance: 10 to 55 Hz (at double amplitude of 3.3 mm .130 inch)
Destructive vibration resistance: 10 to 55 Hz (at double amplitude of 5 mm .197 inch)
 - Sealed construction allows automatic washing.**

9. A range of surface-mount types is also available

SA: Low-profile surface-mount terminal type

⚠ SL: High connection reliability surface-mount terminal type

SS: Space saving surface-mount terminal type

TYPICAL APPLICATIONS

- Air-conditioning control (solenoid load)
- Others, High-capacity control etc.

ORDERING INFORMATION

TX 2 - - - - TH -

Contact arrangement
2: 2 Form C

Surface-mount availability
Nil: Standard PC board terminal type or self-clinching terminal type ⚠
SA: SA type
SL: SL type ⚠
SS: SS type

Operating function
Nil: Single side stable
L: 1 coil latching
L2: 2 coil latching
LT: 2 coil latching

Terminal shape
Nil: Standard PC board terminal or surface-mount terminal
H: Self-clinching terminal ⚠

Nominal coil voltage (DC)*
1.5, 3, 4.5, 5, 6, 9, 12, 24, 48V

Contact material
TH: Power type (Ag+Au clad/stationary, movable)

Packing style
Nil: Tube packing
X: Tape and reel (picked from 1/3/4/5-pin side)
Z: Tape and reel packing (picked from the 8/9/10/12-pin side)

Notes: 1. *48 V coil type: Single side stable only
2. In case of 5 V transistor drive circuit, it is recommended to use 4.5 V type relay.

**TYPES****1. Standard PC board terminal**

| Contact arrangement | Nominal coil voltage | Single side stable | 1 coil latching | 2 coil latching (L2) | 2 coil latching (LT) |
|---------------------|----------------------|--------------------|-----------------|----------------------|----------------------|
| | | Part No. | Part No. | Part No. | Part No. |
| 2 Form C | 1.5V DC | TX2-1.5V-TH | TX2-L-1.5V-TH | TX2-L2-1.5V-TH | TX2-LT-1.5V-TH |
| | 3V DC | TX2-3V-TH | TX2-L-3V-TH | TX2-L2-3V-TH | TX2-LT-3V-TH |
| | 4.5V DC | TX2-4.5V-TH | TX2-L-4.5V-TH | TX2-L2-4.5V-TH | TX2-LT-4.5V-TH |
| | 5V DC | TX2-5V-TH | TX2-L-5V-TH | TX2-L2-5V-TH | TX2-LT-5V-TH |
| | 6V DC | TX2-6V-TH | TX2-L-6V-TH | TX2-L2-6V-TH | TX2-LT-6V-TH |
| | 9V DC | TX2-9V-TH | TX2-L-9V-TH | TX2-L2-9V-TH | TX2-LT-9V-TH |
| | 12V DC | TX2-12V-TH | TX2-L-12V-TH | TX2-L2-12V-TH | TX2-LT-12V-TH |
| | 24V DC | TX2-24V-TH | TX2-L-24V-TH | TX2-L2-24V-TH | TX2-LT-24V-TH |
| | 48V DC | TX2-48V-TH | — | — | — |

Standard packing: Tube: 40 pcs.; Case: 1,000 pcs.

2. self-clinching terminal

| Contact arrangement | Nominal coil voltage | Single side stable | 1 coil latching | 2 coil latching (L2) | 2 coil latching (LT) |
|---------------------|----------------------|--------------------|-----------------|----------------------|----------------------|
| | | Part No. | Part No. | Part No. | Part No. |
| 2 Form C | 1.5V DC | TX2-H-1.5V-TH | TX2-L-H-1.5V-TH | TX2-L2-H-1.5V-TH | TX2-LT-H-1.5V-TH |
| | 3V DC | TX2-H-3V-TH | TX2-L-H-3V-TH | TX2-L2-H-3V-TH | TX2-LT-H-3V-TH |
| | 4.5V DC | TX2-H-4.5V-TH | TX2-L-H-4.5V-TH | TX2-L2-H-4.5V-TH | TX2-LT-H-4.5V-TH |
| | 5V DC | TX2-H-5V-TH | TX2-L-H-5V-TH | TX2-L2-H-5V-TH | TX2-LT-H-5V-TH |
| | 6V DC | TX2-H-6V-TH | TX2-L-H-6V-TH | TX2-L2-H-6V-TH | TX2-LT-H-6V-TH |
| | 9V DC | TX2-H-9V-TH | TX2-L-H-9V-TH | TX2-L2-H-9V-TH | TX2-LT-H-9V-TH |
| | 12V DC | TX2-H-12V-TH | TX2-L-H-12V-TH | TX2-L2-H-12V-TH | TX2-LT-H-12V-TH |
| | 24V DC | TX2-H-24V-TH | TX2-L-H-24V-TH | TX2-L2-H-24V-TH | TX2-LT-H-24V-TH |
| | 48V DC | TX2-H-48V-TH | — | — | — |

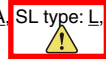
Standard packing: Tube: 40 pcs.; Case: 1,000 pcs.

3. Surface-mount terminal**1) Tube packing**

| Contact arrangement | Nominal coil voltage | Single side stable | 1 coil latching | 2 coil latching (L2) | 2 coil latching (LT) |
|---------------------|----------------------|--------------------|-----------------|----------------------|----------------------|
| | | Part No. | Part No. | Part No. | Part No. |
| 2c | 1.5V DC | TX2S□-1.5V-TH | TX2S□-L-1.5V-TH | TX2S□-L2-1.5V-TH | TX2S□-LT-1.5V-TH |
| | 3V DC | TX2S□-3V-TH | TX2S□-L-3V-TH | TX2S□-L2-3V-TH | TX2S□-LT-3V-TH |
| | 4.5V DC | TX2S□-4.5V-TH | TX2S□-L-4.5V-TH | TX2S□-L2-4.5V-TH | TX2S□-LT-4.5V-TH |
| | 5V DC | TX2S□-5V-TH | TX2S□-L-5V-TH | TX2S□-L2-5V-TH | TX2S□-LT-5V-TH |
| | 6V DC | TX2S□-6V-TH | TX2S□-L-6V-TH | TX2S□-L2-6V-TH | TX2S□-LT-6V-TH |
| | 9V DC | TX2S□-9V-TH | TX2S□-L-9V-TH | TX2S□-L2-9V-TH | TX2S□-LT-9V-TH |
| | 12V DC | TX2S□-12V-TH | TX2S□-L-12V-TH | TX2S□-L2-12V-TH | TX2S□-LT-12V-TH |
| | 24V DC | TX2S□-24V-TH | TX2S□-L-24V-TH | TX2S□-L2-24V-TH | TX2S□-LT-24V-TH |
| | 48V DC | TX2S□-48V-TH | — | — | — |

□: For each surface-mounted terminal identification, input the following letter. SA type: A, SL type: L, SS type: S

Standard packing: Tube: 40 pcs.; Case: 1,000 pcs.

**2) Tape and reel packing**

| Contact arrangement | Nominal coil voltage | Single side stable | 1 coil latching | 2 coil latching (L2) | 2 coil latching (LT) |
|---------------------|----------------------|--------------------|-------------------|----------------------|----------------------|
| | | Part No. | Part No. | Part No. | Part No. |
| 2 Form C | 1.5V DC | TX2S□-1.5V-TH-Z | TX2S□-L-1.5V-TH-Z | TX2S□-L2-1.5V-TH-Z | TX2S□-LT-1.5V-TH-Z |
| | 3V DC | TX2S□-3V-TH-Z | TX2S□-L-3V-TH-Z | TX2S□-L2-3V-TH-Z | TX2S□-LT-3V-TH-Z |
| | 4.5V DC | TX2S□-4.5V-TH-Z | TX2S□-L-4.5V-TH-Z | TX2S□-L2-4.5V-TH-Z | TX2S□-LT-4.5V-TH-Z |
| | 5V DC | TX2S□-5V-TH-Z | TX2S□-L-5V-TH-Z | TX2S□-L2-5V-TH-Z | TX2S□-LT-5V-TH-Z |
| | 6V DC | TX2S□-6V-TH-Z | TX2S□-L-6V-TH-Z | TX2S□-L2-6V-TH-Z | TX2S□-LT-6V-TH-Z |
| | 9V DC | TX2S□-9V-TH-Z | TX2S□-L-9V-TH-Z | TX2S□-L2-9V-TH-Z | TX2S□-LT-9V-TH-Z |
| | 12V DC | TX2S□-12V-TH-Z | TX2S□-L-12V-TH-Z | TX2S□-L2-12V-TH-Z | TX2S□-LT-12V-TH-Z |
| | 24V DC | TX2S□-24V-TH-Z | TX2S□-L-24V-TH-Z | TX2S□-L2-24V-TH-Z | TX2S□-LT-24V-TH-Z |
| | 48V DC | TX2S□-48V-TH-Z | — | — | — |

Standard packing: Tape and reel: 500 pcs.; Case: 1,000 pcs.

Note: Tape and reel packing symbol "Z" is not marked on the relay. "X" type tape and reel packing (picked from 1/2/3/4-pin side) is also available.

**RATING****1. Coil data**

1) Single side stable

| Nominal coil voltage | Pick-up voltage (at 20°C 68°F) | Drop-out voltage (at 20°C 68°F) | Nominal operating current [±10%] (at 20°C 68°F) | Coil resistance [±10%] (at 20°C 68°F) | Nominal operating power | Max. applied voltage (at 20°C 68°F) |
|----------------------|--|--|---|---------------------------------------|-------------------------|-------------------------------------|
| 1.5V DC | 75%V or less of nominal voltage* (Initial) | 10%V or more of nominal voltage* (Initial) | 93.8mA | 16Ω | 140mW | 150%V of nominal voltage |
| 3V DC | | | 46.7mA | 64.3Ω | | |
| 4.5V DC | | | 31mA | 145Ω | | |
| 5V DC | | | 28.1mA | 178Ω | | |
| 6V DC | | | 23.3mA | 257Ω | | |
| 9V DC | | | 15.5mA | 579Ω | | |
| 12V DC | | | 11.7mA | 1,028Ω | | |
| 24V DC | | | 5.8mA | 4,114Ω | | |
| 48V DC | | | 5.6mA | 8,533Ω | 270mW | |

2) 1 coil latching

| Nominal coil voltage | Set voltage (at 20°C 68°F) | Reset voltage (at 20°C 68°F) | Nominal operating current [±10%] (at 20°C 68°F) | Coil resistance [±10%] (at 20°C 68°F) | Nominal operating power | Max. applied voltage (at 20°C 68°F) |
|----------------------|--|--|---|---------------------------------------|-------------------------|-------------------------------------|
| 1.5V DC | 75%V or less of nominal voltage* (Initial) | 75%V or less of nominal voltage* (Initial) | 66.7mA | 22.5Ω | 100mW | 150%V of nominal voltage |
| 3V DC | | | 33.3mA | 90Ω | | |
| 4.5V DC | | | 22.2mA | 202.5Ω | | |
| 5V DC | | | 20mA | 250Ω | | |
| 6V DC | | | 16.7mA | 360Ω | | |
| 9V DC | | | 11.1mA | 810Ω | | |
| 12V DC | | | 8.3mA | 1,440Ω | | |
| 24V DC | | | 4.2mA | 5,760Ω | | |

3) 2 coil latching (L2, LT)

| Nominal coil voltage | Set voltage (at 20°C 68°F) | Reset voltage (at 20°C 68°F) | Nominal operating current [±10%] (at 20°C 68°F) | | Coil resistance [±10%] (at 20°C 68°F) | | Nominal operating power | | Max. applied voltage (at 20°C 68°F) |
|----------------------|--|--|---|------------|---------------------------------------|------------|-------------------------|------------|-------------------------------------|
| | | | Set coil | Reset coil | Set coil | Reset coil | Set coil | Reset coil | |
| 1.5V DC | 75%V or less of nominal voltage* (Initial) | 75%V or less of nominal voltage* (Initial) | 93.8mA | 93.8mA | 16Ω | 16Ω | 140mW | 140mW | 150%V of nominal voltage |
| 3V DC | | | 46.7mA | 46.7mA | 64.3Ω | 64.3Ω | | | |
| 4.5V DC | | | 31mA | 31mA | 145Ω | 145Ω | | | |
| 5V DC | | | 28.1mA | 28.1mA | 178Ω | 178Ω | | | |
| 6V DC | | | 23.3mA | 23.3mA | 257Ω | 257Ω | | | |
| 9V DC | | | 15.5mA | 15.5mA | 579Ω | 579Ω | | | |
| 12V DC | | | 11.7mA | 11.7mA | 1,028Ω | 1,028Ω | | | |
| 24V DC | | | 5.8mA | 5.8mA | 4,114Ω | 4,114Ω | | | |

*Pulse drive (JIS C 5442-1986)

**2. Specifications**

| Characteristics | Item | Specifications | |
|--|--|--|---|
| Contact | Arrangement | 2 Form C | |
| | Initial contact resistance, max. | Max. 100 mΩ (By voltage drop 6 V DC 1A) | |
| | Contact material | Ag+Au plating | |
| Rating | Nominal switching capacity | 2 A 30 V DC, 0.5 A 125 V AC (resistive load) | |
| | Max. switching power | 60 W, 60 VA (resistive load) | |
| | Max. switching voltage | 220V DC, 250V AC | |
| | Max. switching current | 7.5 A (When used at 7.5 A. Regarding connection method, you must follow the precaution, below*.) | |
| | Min. switching capacity (Reference value)*1 | 10μA 10mV DC | |
| | Nominal operating power | Single side stable | 140 mW (1.5 to 24 V DC), 270 mW (48 V DC) |
| | | 1 coil latching | 100 mW (1.5 to 24 V DC) |
| 2 coil latching | | 140 mW (1.5 to 24 V DC) | |
| Electrical characteristics | Insulation resistance (Initial) | Min. 1,000MΩ (at 500V DC) | |
| | | Measurement at same location as "Initial breakdown voltage" section. | |
| | | Breakdown voltage (Initial) | |
| | Between open contacts | 1,000 Vrms for 1min. (Detection current: 10mA) | |
| | Between contact and coil | 2,000 Vrms for 1min. (Detection current: 10mA) | |
| | Between contact sets | 1,000 Vrms for 1min. (Detection current: 10mA) | |
| | Temperature rise (at 20°C 68°F) | Max. 50°C (By resistive method, nominal coil voltage applied to the coil; contact carrying current: 2A.) | |
| | Surge breakdown voltage (Initial) | Between open contacts | 1,500 V (10×160μs) (FCC Part 68) |
| | | Between contacts and coil | 2,500 V (2×10μs) (Telcordia) |
| Operate time [Set time] (at 20°C 68°F) | Max. 4 ms [Max. 4 ms] (Nominal coil voltage applied to the coil, excluding contact bounce time.) | | |
| Release time [Reset time] (at 20°C 68°F) | Max. 4 ms [Max. 4 ms] (Nominal coil voltage applied to the coil, excluding contact bounce time.) (without diode) | | |
| Mechanical characteristics | Shock resistance | Functional | Min. 750 m/s ² (Half-wave pulse of sine wave: 6 ms; detection time: 10μs.) |
| | | Destructive | Min. 1,000 m/s ² (Half-wave pulse of sine wave: 6 ms.) |
| | Vibration resistance | Functional | 10 to 55 Hz at double amplitude of 3.3 mm (Detection time: 10μs.) |
| | | Destructive | 10 to 55 Hz at double amplitude of 5 mm |
| Expected life | Mechanical | Min. 10 ⁸ (at 180 cpm) | |
| | Electrical | Min. 10 ⁵ (2 A 30 V DC resistive), 5×10 ⁵ (1 A 30 V DC resistive), Min. 10 ⁵ (0.5 A 125 V AC resistive) (at 20 cpm) Min. 2×10 ⁵ (7.5 A inrush (250 ms)/1.5 A normal 30 V AC (cosφ = 0.4)) (ON/OFF = 1s/9s) | |
| Conditions | Conditions for operation, transport and storage*2 | Ambient temperature: -40°C to +85°C (up to 24 V coil) -40°F to +185°F [-40°C to +70°C (48 V coil) -40°F to +158°F]; Humidity: 5 to 85% R.H. (Not freezing and condensing at low temperature) | |
| | Max. operating speed (at rated load) | 20 cpm | |
| Unit weight | | Approx. 2 g .071 oz | |

Notes: *1 This value can change due to the switching frequency, environmental conditions, and desired reliability level, therefore it is recommended to check this with the actual load.

*2 Refer to 6. Conditions for operation, transport and storage mentioned in AMBIENT ENVIRONMENT.

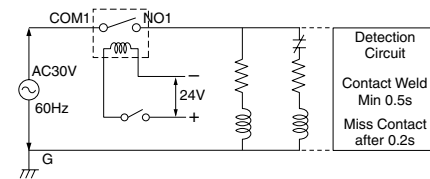
REFERENCE DATA**1. Electrical life (2 × 10⁵ operation is possible)**

Tested sample: TX2SA-24V-TH, 6 pcs.

Switching frequency: ON:OFF = 1s:9s

Ambient temperature: 25°C 77°F

Circuit



Condition: 30 V AC

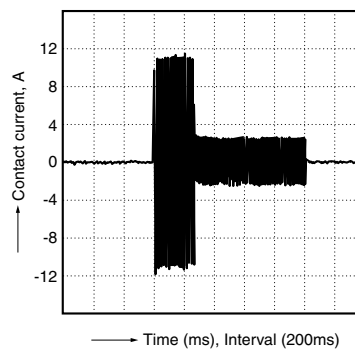
Inrush current 7.5 A (execution value),

inrush time 250 ms

Normal current 1.5 A (execution value),

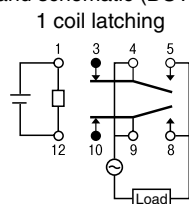
(inductive load cosφ = 0.4)

Inrush current wave form vs time

***Precaution**

When using at 7.5 A, connection of NO (pin #5 and #8) and COM (pin #4 and #9) in the circuit is required.

Pin layout and schematic (BOTTOM VIEW)



For general REFERENCE DATA, DIMENSIONS and NOTES, please refer to the "TX Relay".