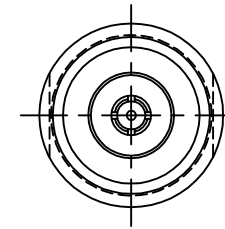
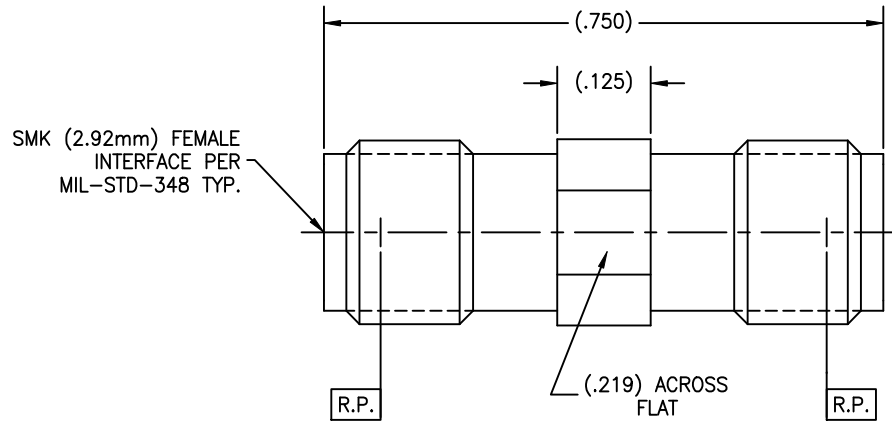


P/N	APPLICABLE NOTE(S)
CC	1,2
CCSF	1,2

REVISIONS				
ZONE	REV	DESCRIPTION	DATE	BY
-	-	-	-	-



DRAWING NO.	224	REV.	-
-------------	-----	------	---

NOTES(S):

1. MATERIAL(S):
 - 1.1 BODY & INSERT: 303 PER ASTM A-582
 - 1.2 CENTER CONDUCTOR: BeCu ALLOY C173 PER ASTM B-196.
 - 1.3 BEAD: (HIGH PERFORMANCE APPLICATION)
2. FINISH(ES):
 - 2.1 BODY & INSERT:
 - (FOR CCSF's) PASSIVATED PER ASTM A-967.
 - (FOR CC's) GOLD PLATE PER ASTM B-488 OVER NICKEL PLATE PER AMS-QQ-N-290.
 - 2.2 CENTER CONDUCTOR: GOLD PLATE PER ASTM B-488 OVER NICKEL PLATE PER AMS-QQ-N-290.
 - 2.3 BEAD: NONE

NOTICE

THIS DRAWING EMBODIES A CONFIDENTIAL PROPRIETARY DESIGN ORIGINATED BY TENSOLITE COMPANY AND ALL DESIGN, MANUFACTURING REPRODUCTION, USE AND SALE RIGHTS REGARDING THE SAME ARE EXPRESSLY RESERVED. IT IS SUBMITTED UNDER A CONFIDENTIAL RELATIONSHIP FOR A SPECIFIED PURPOSE AND THE RESPONDENT AGREES BY ACCEPTING THIS DRAWING NOT TO SUPPLY OR DISCLOSE ANY INFORMATION REGARDING IT TO ANY UNAUTHORIZED PERSON TO INCORPORATE IN OTHER PROJECTS ANY SPECIAL FEATURES RELEVANT TO THIS DESIGN. ALL PATENT RIGHTS HERETO ARE EXPRESSLY RESERVED BY TENSOLITE COMPANY, LONG BEACH, CALIFORNIA 90815.

TOLERANCES AND NOTES EXCEPT AS NOTED		SEE NOTES	-	SEE NOTES	-
DIMENSIONS ARE IN INCHES. LINEAR .001 ± 0.015 ANGULAR ± 1/2° FRACTION ± 1/32		MATERIAL	SIZE	SPECIFICATION	PROCUREMENT
1. MACHINE FINISH: $\sqrt{32}$ RMS 2. BREAK ALL SHARP EDGES .003 MAX.		NEXT ASSY	Tensolite HIGH PERFORMANCE CABLES & INTERCONNECT SYSTEMS Long Beach, California 90815		
3. MACHINED FILLETS .005 MAX. 4. MACHINED SURFACES SQUARE TO RESPECTIVE AXIS WITHIN .005 INCHES PER INCH. 5. MACHINED DIAMETERS CONCENTRIC WITHIN .002 T.I.R. 6. DIMENSIONS TO BE MET BEFORE PLATING. 7. CHAMFER ALL THREADS 45°. 8. THREADS PER 14-28 9. REMOVE FRAVED EDGES ON TEFLON. 10. REMOVE ALL BURRS.		APPROVAL INITIALS	DATE	TITLE	
		DRAWN BY	R.C.	03.13.02	SMK (2.92mm) FEMALE TO FEMALE STRAIGHT ADAPTER
		CHECKED	SCALE		
		ENGINEERING	ATV	06.18.02	8/1 OL
		SIZE		CAGE CODE	DRAWING NO.
		C 30990		224	SHEET 1 OF 1
					REV. -