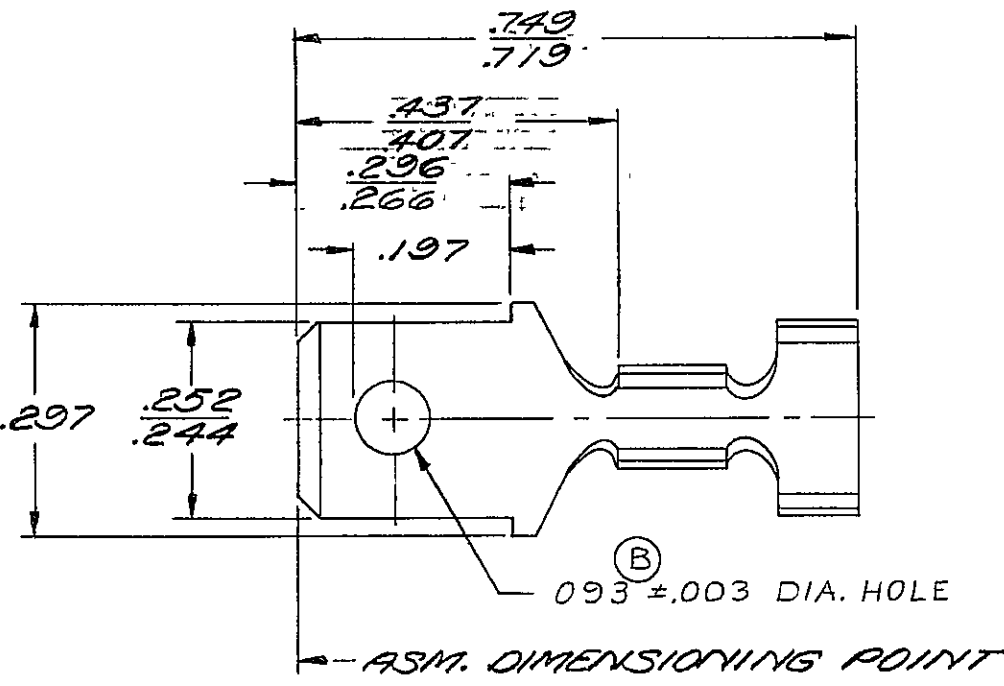


PACKARD ELECTRIC DIVISION
GENERAL MOTORS CORPORATION
WARREN, OHIO

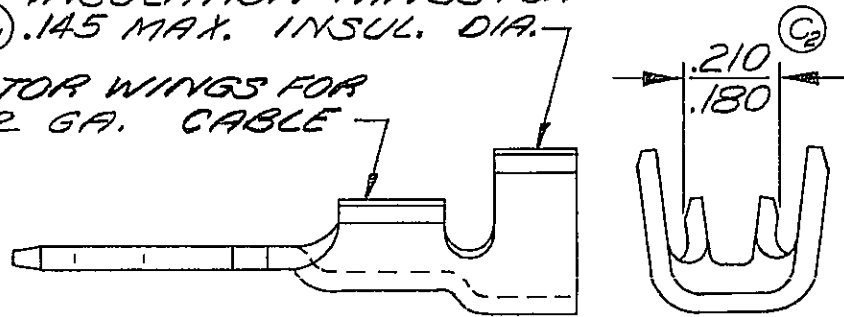
D

DO NOT SCALE
 THIS DRAWING AND DESIGN HEREON CONSTITUTES A PROPRIETARY DESIGN OF PACKARD ELECTRIC DIVISION AND IS NOT TO BE DUPLICATED OR REPRODUCED WITHOUT AUTHORITY OF PACKARD ELECTRIC DIVISION

STRIP—.22
 DEDUCT—.38



INSULATION WINGS FOR
 (C1) .145 MAX. INSUL. DIA.
 CONDUCTOR WINGS FOR
 #12 GA. CABLE



C02D1541

—OUTLINE DRAWING—

PART NO.		2965479		SIZE	A
DATE	SYM	REVISION RECORD		C/N NO.	
9-23-60	A	REVISED & REDRAWN		2721	
1-9-67	B1	±.005 WAS ±.003		3599	
	B	.093 ±.003 WAS .093			
7-5-66	C2	DIMENSIONING POINT		21423	
		& DIMENSION REVISED			
	C1	.145 WAS .155			
	C	MAT'L. SPEC. WAS			
		.032 BRASS-TIN			
		PLATED			
11-21-67	D	MAT'L SPEC. WAS		29765	
		0320 THK. SAE CA260			
		BRASS 1/2 HARD -			
		TIN PLATED.			
12-18-74	-	MAT'L SPEC REVISED		54420	
CODE NO. 6900			TOLERANCE UNLESS OTHERWISE SPECIFIED		
			DECIMAL ±.005 (B1)		
			FRACTIONAL		
			ANGULAR		
DWG DATE	3-19-57	SCALE	NONE	DR	PLYLER
ROUTING		DEPT		CHK	Rease 10-3-60
OUTST		REFERENCE		APPR	
		2977221-D		APPR	R.E. Kirk 10-3
MATERIAL SPEC				CODE NO.	
.032 THK. SAE CA 210					
BRASS-TIN PLATED					
NAME					
TERMINAL-MALE -56 SERIES					
#12 GA. CABLE					
PART NO.				SIZE	
2965479				A	

6 R
 74R
 330R
 350R
 1374R
 FEB-A
 ED-V
 900R
 952R
 2100R
 99