



# Serie FME

## Series FME

# 8

HF-Steckverbindungen der Serie FME können bis zu einer Frequenz von 2 GHz eingesetzt werden. Das Haupteinsatzgebiet dieser Steckverbinderserie liegt im Mobilfunkbereich (C,D und E-Netz). Durch ihre kompakte Bauform eignen sie sich insbesondere für den Einsatz in Fahrzeugen.

RF-Connectors of the series FME are suitable for frequencies up to 2 GHz. The main usage for this connector series is in the area of mobile communication (PCN, GSM). The compact dimensions makes the series FME especially suitable for applications in vehicles.

### Mechanische Eigenschaften

● Lebensdauer (Steckungen)	≥ 500
● Ziehkraft	≥ 0.5 N
● Max. Drehmoment	200 Ncm
● Werkstoffe	
Federnde Kontaktteile	CuPb1.15Ni1(C97)
Crimprohr	SF Cu w
Sonstige Metallteile	CuZn39Pb3
Isolierteile	PP
● Oberflächen	
Innenleiter	Cu2Ag5
Sonstige Metallteile	Cu2Ni5
oder schwarz (auf Anfrage)	Cr; Ag; Ni; Cu

### Mechanical Characteristics

● Durability (mating cycles)	
● Withdrawal force	
● Max. coupling torque	
● Materials	
Spring contacts	
Crimp ferrule	
Other metal parts	
Insulators	
● Finish	
Inner conductor	
Other metal parts	
or black (upon request)	

### Thermische und klimatische Eigenschaften

● Prüfklasse nach DIN IEC 68 Teil 1	55/085/21
-------------------------------------	-----------

### Climatic Characteristics

● Climatic category acc. to IEC 68 - 1	
--	--

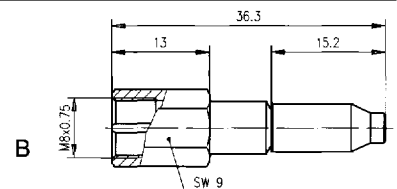
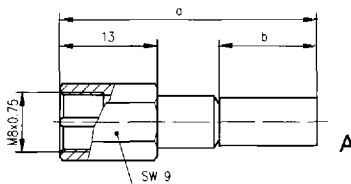
### Elektrische Eigenschaften

● Durchgangswiderstand	
Innenleiter	≤ 10 m Ω
Außenleiter	≤ 5 m Ω
● Isolationswiderstand	≥ 5 G Ω
● Spannungsfestigkeit	1 kVeff/50 Hz
● Wellenwiderstand	50 Ω
● Reflexionsfaktor	≤ 0.1/1.8 GHz
● Betriebsspannung	≤ 100 Veff/50 Hz
● Einfügedämpfung	≤ 0.2 dB/1.8 GHz
● Rückflußdämpfung	≥ 20 dB/1.8 GHz
● Frequenzbereich bis	2 GHz

### Electrical Characteristics

● Contact resistance	
Inner conductor	
Outer conductor	
● Insulation resistance	
● Voltage proof	
● Impedance	
● Reflection factor	
● Working voltage	
● Insertion loss	
● Return loss	
● Frequency range up to	

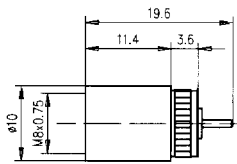
## 1. FME-Kabelstecker Crimp FME Straight Plug Crimp



Bestell-Nr. Order Nr.	Kabelgruppe (Beispiel) / Kabel Cable group (example) / cable	Montage Assembly	Abb. Fig.	Anmerkungen Remarks
J01700A0006	G1 (RG-58C/U)	B1205	A	crimp/crimp a = 34.2 b = 13
J01700A0009	H 155; Low Loss 1.4/3.8	B1206	A	crimp/crimp a = 34.7 b = 13.5
J01700A0010	G7 (RG-316/U)	B2703	A	löt/crimp / solder/crimp a = 31.2 b = 9.5 Low cost 15dB/2Ghz
J01700A0007	G7 (RG-316/U)	B2105	B	crimp/crimp

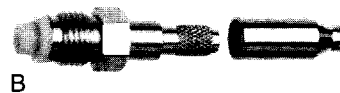
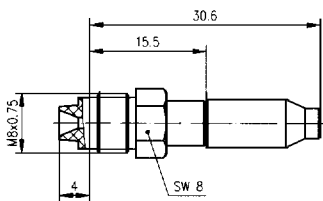
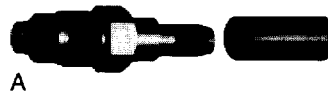
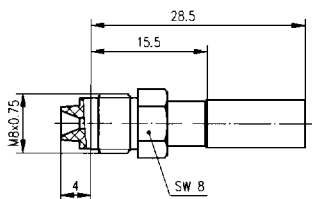


2. FME-Einpreßstecker  
FME Press-In Plug



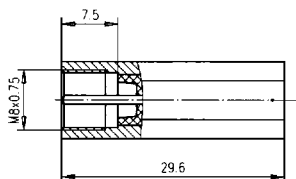
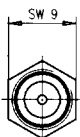
Bestell-Nr. Order Nr.	Montage Assembly	Anmerkungen Remarks
F01700A0000	Z38	Isolierung / insulator POM

3. FME-Kabelbuchse Crimp  
FME Straight Jack Crimp



Bestell-Nr. Order Nr.	Kabelgruppe (Beispiel) / Kabel Cable group (example) / cable	Montage Assembly	Abb. Fig.
J01701A0003	H 155; Low Loss 1.4/3.8	B0806	A
J01701A0004	Low Loss 1.05/2.95	B0801	A
J01701A0007	G1 (RG-58C/U)	B0805	A
J01701A0008	G7 (RG-316/U)	B2005	B

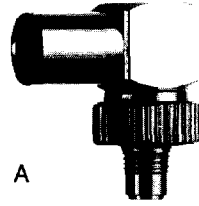
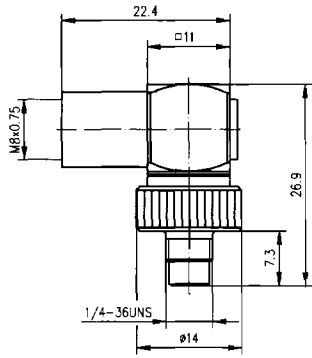
4. FME-Kupplung  
FME Adaptor



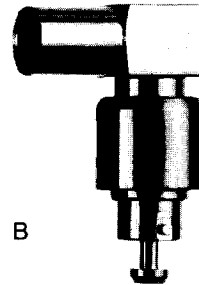
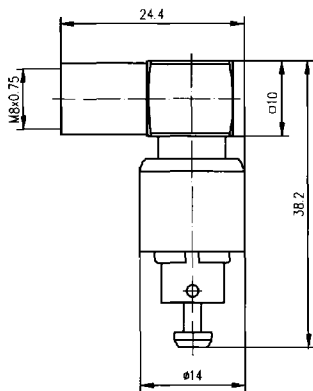
Bestell-Nr. Order Nr.	Anmerkungen Remarks
J01702A0001	Sti-Sti/m-m



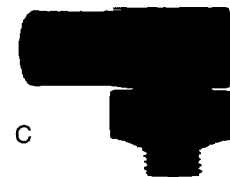
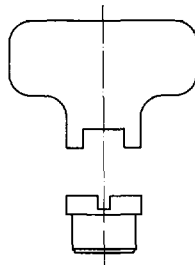
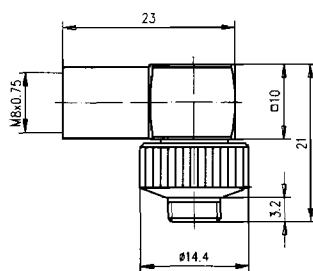
5. FME-Adapter und FME-Adapterkabel für Mobilfunknetze (Handy)  
FME Adaptors and FME Adaptor Cable for mobile communication networks (Handy)



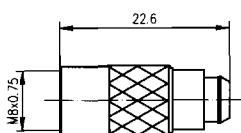
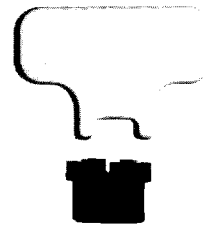
A



B



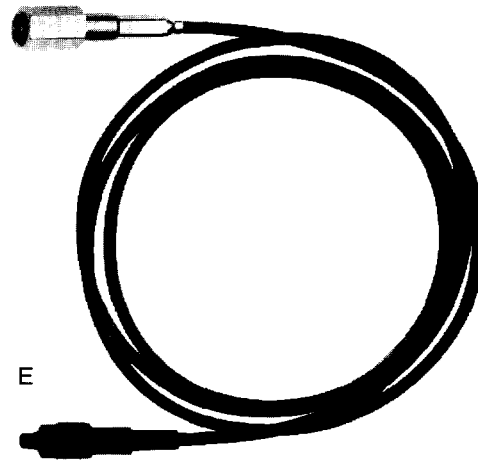
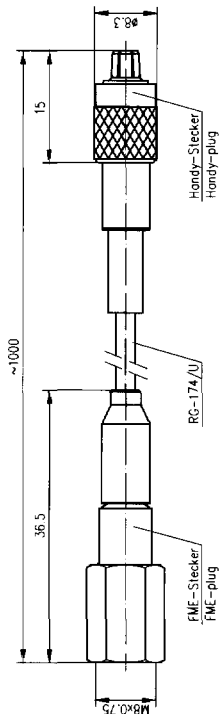
C



D

FME





FME

8

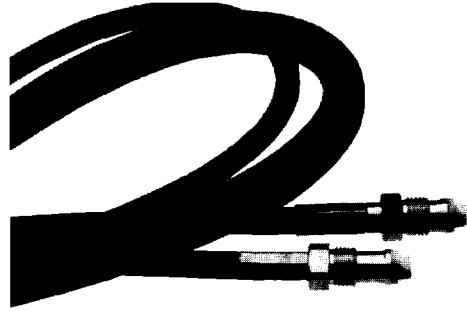
Bestell-Nr. Order Nr.	Abb. Fig.	Anmerkungen Remarks
J01703A0002	A	Winkeladapter FME auf Motorola Handy Serie 3000, vernickelt <i>Angle Adaptor FME to Motorola Handy Serie 3000, nickel-plated</i>
J01703A0005	A	Winkeladapter FME auf Motorola Handy Serie 3000, schwarzverchromt <i>Angle Adaptor FME to Motorola Handy Serie 3000, black chrom-plated</i>
J01703A0004	B	Winkeladapter FME auf Ericsson Handy GH 172/GH 174, vernickelt <i>Angle Adaptor FME to Ericsson Handy GH 172/GH174, nickel-plated</i>
J01703A0003	B	Winkeladapter FME auf Ericsson Handy GH 172/GH 174, schwarzverchromt <i>Angle Adaptor FME to Ericsson Handy GH 172/GH174, black chrom-plated</i>
J01703A0006	C	Winkeladapter FME auf Ericsson Handy GH 197, schwarzverchromt <i>Angle Adaptor FME to Ericsson Handy GH 197, black chrom-plated</i>
J01703A0007	D	Adapter FME auf Nokia Handy Serie 1011, schwarzverchromt <i>Adaptor FME to Nokia Handy Serie 1011, black chrom-plated</i>
L00010A0491	E	Adapterkabel FME auf Nokia Handy Serie 2110 / <i>Adaptor-Cable FME to Nokia Handy Series 2110</i>



Weitere FME-Adapter in Kapitel 17: Adapter zwischen den Serien.  
*For more FME-Adaptors see chapter 17: Inter Series Adaptors.*



6. Norm FME: Beidseitig FME-Buchse  
*Both sides FME-Jack*



FME

8

Kabeltyp: RG-58C/U (50Ω) / *Cable type: RG-58C/U (50Ω)*

Länge Length	Bestell-Nr./Order Nr.
-----------------	-----------------------

l = 1000 mm	L00010A0392
l = 2000 mm	L00011A0135
l = 3000 mm	L00012A0018
l = 4000 mm	L00013A0013
l = 5000 mm	L00013A0014

Kabeltyp: RG-174/U (50Ω) / *Cable type: RG-174/U (50Ω)*


Länge Length	Bestell-Nr./Order Nr.
-----------------	-----------------------

l = 1500 mm	L00011A0161
l = 3000 mm	L00012A0038
l = 4000 mm	L00013A0039
l = 5000 mm	L00013A0040

Kabeltyp: Low Loss (50Ω) / *Cable type: Low Loss (50Ω)*

Länge Length	Bestell-Nr./Order Nr.
-----------------	-----------------------

l = 1500 mm	L00011A0181
l = 3000 mm	L00012A0060
l = 4000 mm	L00013A0054
l = 5000 mm	L00013A0055

 Weitere konfektionierte Kabel auf Anfrage.  
*Further cable assemblies on request.*