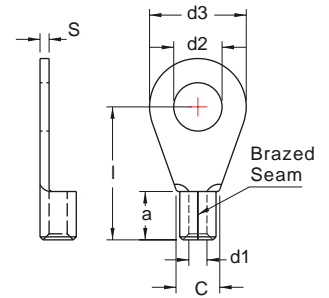


DIN 46234

**NON-INSULATED
RING TERMINALS**



MAXIMUM ELECTRIC CURRENT:

| | | | | | |
|--------|----|----|----|----|----|
| A.W.G. | 16 | 14 | 12 | 10 | 8 |
| AMP. | 18 | 30 | 35 | 50 | 70 |

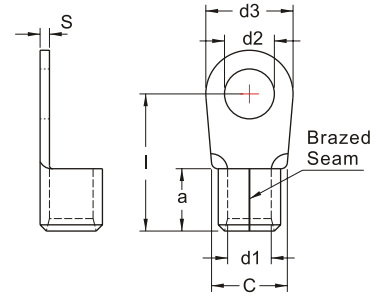
TERMINAL MATERIAL: COPPER

| WIRE RANGE A.W.G. mm ² | ITEM NO. | STUD SIZE | | DIMENSION mm | | | | | CRIMPING TOOL | Q'TY BOX | |
|---|-------------|-----------|------|--------------|------|-----|-----|-----|---------------|---|------|
| | | d2 | d3 | l | a | C | d1 | S | | | |
| 16-14 A.W.G. 1.5-2.5 mm ² | DRNB4-2.5 | #8 | 4.3 | 8.0 | 12.0 | 5.0 | 4.5 | 2.3 | 0.8 | IZUMI MODEL 5N18 WITH DIE INDEX NO:2 OR K.S. MODEL KST2000D-1322 LY-2045A WITH DIE INDEX NO:2 | 1000 |
| | DRNBS5-2.5 | #10 | 5.3 | | 13.5 | | | | | | 1000 |
| | DRNB5-2.5 | #10 | 5.3 | 10.0 | 14.0 | | | | | | 1000 |
| | DRNB6-2.5 | 1/4 | 6.5 | 11.0 | 16.0 | | | | | | 1000 |
| | DRNB8-2.5 | 5/16 | 8.4 | 14.0 | 17.0 | | | | | | 1000 |
| | DRNB10-2.5 | 3/8 | 10.5 | 15.0 | | | | | | | 1000 |
| | DRNBL10-2.5 | 3/8 | 10.5 | 18.0 | 18.5 | | | | | | 1000 |
| | DRNB12-2.5 | 1/2 | 13.0 | | 20.0 | | | | | | 1000 |
| 12-10 A.W.G. 2.5-6 mm ² | DRNB3-6 | #4 | 3.2 | 6.0 | 14.0 | 6.0 | 6.0 | 3.6 | 1.0 | IZUMI MODEL 5N18 WITH DIE INDEX NO:5.5 OR K.S. MODEL KST2000D-1322 LY-2045A WITH DIE INDEX NO:5.5(6.0) | 1000 |
| | DRNBL3-6 | #4 | 3.2 | 7.2 | | | | | | | 1000 |
| | DRNB3.5-6 | #6 | 3.7 | 8.0 | 13.5 | | | | | | 1000 |
| | DRNB4-6 | #8 | 4.3 | | 14.0 | | | | | | 1000 |
| | DRNB5-6 | #10 | 5.3 | 10.0 | 15.0 | | | | | | 1000 |
| | DRNB6-6 | 1/4 | 6.5 | 11.0 | 16.0 | | | | | | 1000 |
| | DRNBL6-6 | 1/4 | 6.5 | 18.0 | 21.0 | | | | | | 1000 |
| | DRNB8-6 | 5/16 | 8.4 | 14.0 | 19.0 | | | | | | 1000 |
| | DRNB10-6 | 3/8 | 10.5 | 18.0 | 21.0 | | | | | | 500 |
| | DRNB12-6 | 1/2 | 13.0 | | 21.0 | | | | | | 500 |
| 8 A.W.G. 10 mm ² | DRNB4-10 | #8 | 4.3 | 10.0 | 16.0 | 8.0 | 8.0 | 4.5 | 1.1 | IZUMI MODEL 5N18 WITH DIE INDEX NO:8 OR K.S. MODEL KST2000D-1322 LY-2045A WITH DIE INDEX NO:8(10) | 500 |
| | DRNB5-10 | #10 | 5.3 | | 17.0 | | | | | | 500 |
| | DRNB6-10 | 1/4 | 6.5 | 11.0 | 17.0 | | | | | | 500 |
| | DRNB8-10 | 5/16 | 8.4 | 14.0 | 20.0 | | | | | | 500 |
| | DRNB10-10 | 3/8 | 10.5 | 18.0 | 21.0 | | | | | | 500 |
| | DRNB12-10 | 1/2 | 13.0 | 22.0 | 23.0 | | | | | | 500 |

UL cUL ALL LISTED

DIN 46234

**NON-INSULATED
RING TERMINALS**



MAXIMUM ELECTRIC CURRENT:

| | | | | |
|--------|----|-----|-----|-----|
| A.W.G. | 6 | 4 | 2 | 1/0 |
| AMP. | 95 | 125 | 170 | 230 |

TERMINAL MATERIAL: COPPER

| WIRE RANGE A.W.G. mm ² | ITEM NO. | STUD SIZE | | DIMENSION mm | | | | | CRIMPING TOOL | Q'TY BOX | |
|---|-----------|-----------|------|--------------|------|------|------|------|---------------|---|-----|
| | | d2 | d3 | I | a | C | d1 | S | | | |
| 6 A.W.G. 16 mm ² | DRNB4-16 | #8 | 4.3 | 11.0 | 20.0 | 10.0 | 10.5 | 5.8 | 1.2 | IZUMI MODEL 9H-60 WITH DIE INDEX NO:14 OR KLAUKE MODEL PK25 WITH DIE INDEX NO.:HQ25/16 OR K.S. MODEL LY-2045E OR KSTP-325T WITH DIE INDEX NO:16 | 500 |
| | DRNB5-16 | #10 | 5.3 | | | | | | | | 500 |
| | DRNB6-16 | 1/4 | 6.5 | 11.0 | 20.0 | | | | | | 500 |
| | DRNB8-16 | 5/16 | 8.4 | 14.0 | 22.0 | | | | | | 500 |
| | DRNB10-16 | 3/8 | 10.5 | 18.0 | 24.0 | | | | | | 500 |
| | DRNB12-16 | 1/2 | 13.0 | 22.0 | 26.0 | | | | | | 400 |
| 4 A.W.G. 25 mm ² | DRNB5-25 | #10 | 5.3 | 12.0 | 25.0 | 11.0 | 12.0 | 7.5 | 1.5 | IZUMI MODEL 9H-60 WITH DIE INDEX NO:22 OR KLAUKE MODEL PK25 WITH DIE INDEX NO.:HQ25/25 OR K.S. MODEL KSTP-325T WITH DIE INDEX NO:25 | 250 |
| | DRNB6-25 | 1/4 | 6.5 | 12.0 | 25.0 | | | | | | 250 |
| | DRNB8-25 | 5/16 | 8.4 | 16.0 | 25.0 | | | | | | 250 |
| | DRNB10-25 | 3/8 | 10.5 | 18.0 | 26.0 | | | | | | 200 |
| | DRNB12-25 | 1/2 | 13.0 | 22.0 | 31.0 | | | | | | 200 |
| | DRNB16-25 | 5/8 | 17.0 | 28.0 | 35.0 | | | | | | 200 |
| 2 A.W.G. 35 mm ² | DRNB6-35 | 1/4 | 6.5 | 15.0 | 26.0 | 12.0 | 15.0 | 9.0 | 1.6 | IZUMI MODEL 9H-60 WITH DIE INDEX NO:38 OR KLAUKE MODEL PK25 WITH DIE INDEX NO.:HQ25/35 OR K.S. MODEL KSTP-325T WITH DIE INDEX NO:35 | 250 |
| | DRNB8-35 | 5/16 | 8.4 | 16.0 | 26.0 | | | | | | 200 |
| | DRNB10-35 | 3/8 | 10.5 | 18.0 | 27.0 | | | | | | 200 |
| | DRNB11-35 | 7/16 | 11.5 | 22.0 | 31.0 | | | | | | 200 |
| | DRNB12-35 | 1/2 | 13.0 | 22.0 | 31.0 | | | | | | 200 |
| | DRNB16-35 | 5/8 | 17.0 | 28.0 | 36.0 | | | | | | 100 |
| 1/0 A.W.G. 50 mm ² | DRNB6-50 | 1/4 | 6.5 | 18.0 | 34.0 | 16.0 | 17.0 | 11.0 | 1.8 | IZUMI MODEL 9H-60 WITH DIE INDEX NO:60 OR KLAUKE MODEL PK25 WITH DIE INDEX NO.:HQ25/50 OR K.S. MODEL KH-150 OR KSTP-325T WITH DIE INDEX NO:50 | 100 |
| | DRNB8-50 | 5/16 | 8.4 | 18.0 | 34.0 | | | | | | 100 |
| | DRNB10-50 | 3/8 | 10.5 | 18.0 | 34.0 | | | | | | 100 |
| | DRNB12-50 | 1/2 | 13.0 | 22.0 | 36.0 | | | | | | 100 |
| | DRNB16-50 | 5/8 | 17.0 | 28.0 | 40.0 | | | | | | 100 |

UL cUL ALL LISTED