

# CAR AUDIO

## 7 Band 1 ch Spectrum Analyzer

KC-830A is an integrated IC of 7 band spectrum analyzers in a package.

### FEATURES

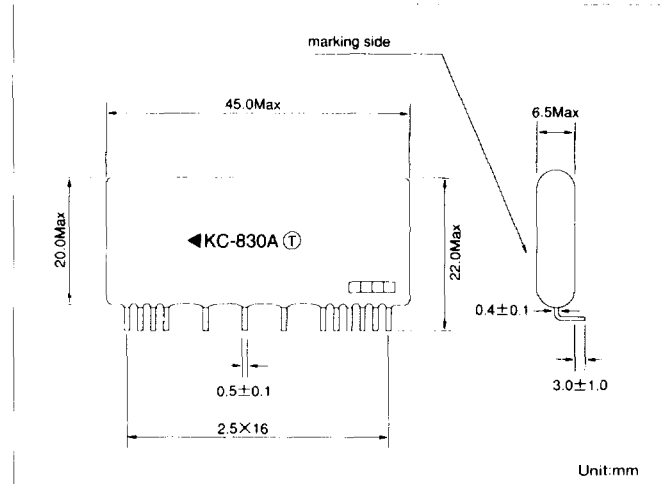
- Low back form is realized as leadframe shape is devised.
- Frequency centers: 60Hz, 125Hz, 250Hz, 1kHz, 3.5kHz, and 10kHz.

### ABSOLUTE MAXIMUM RATINGS

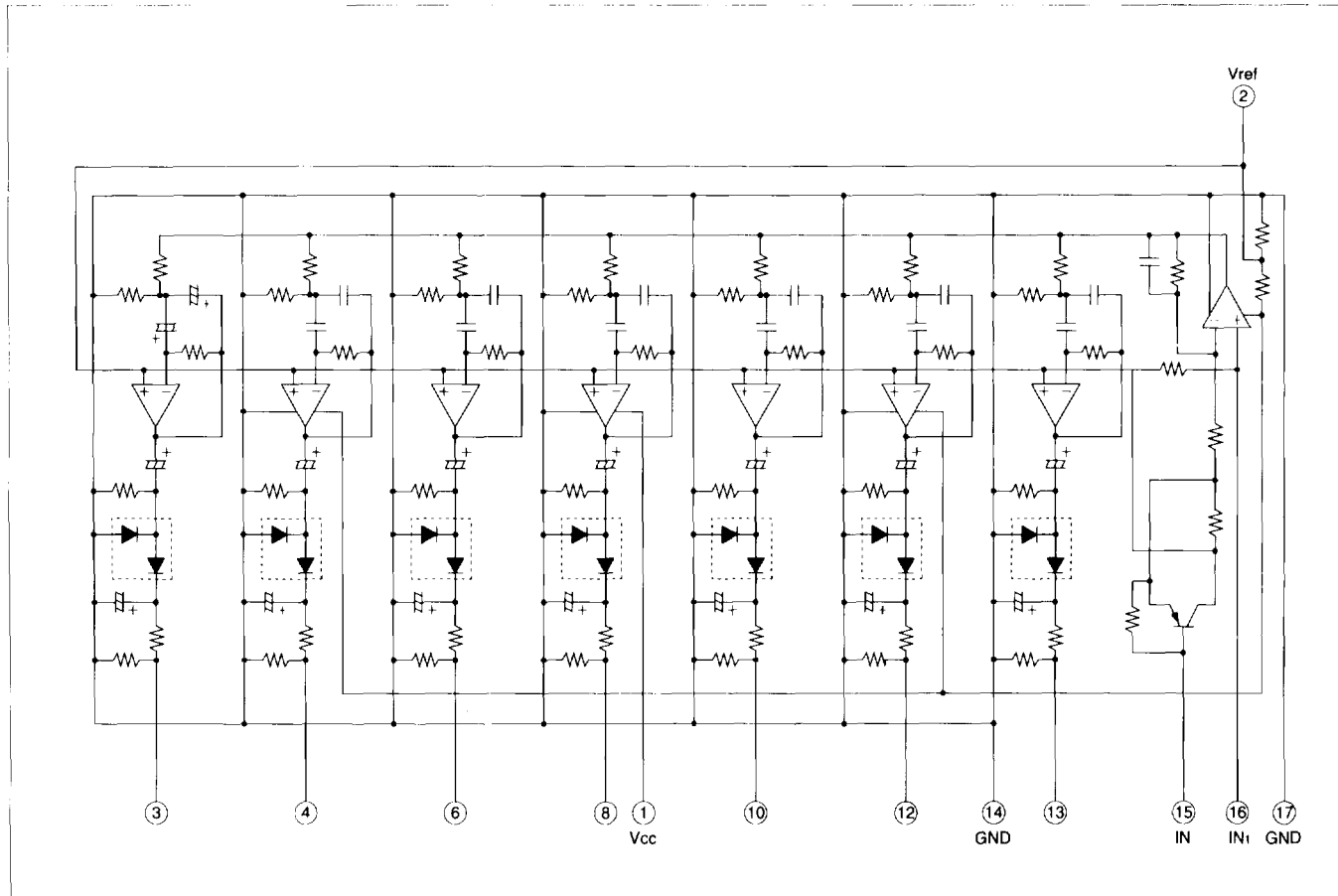
(TA = 25°C, unless

Item	Symbol	Rating	Unit
Supply voltage	Vcc	18	V
Power dissipation	P <sub>D</sub>	800	mW
Operating temperature	T <sub>opr</sub>	20 - +70	°C
Storage temperature	T <sub>stg</sub>	-40 - +85	°C

### OUTLINE DIMENSIONS



### INTERNAL CIRCUIT



# CAR AUDIO

## ELECTRICAL CHARACTERISTICS

T<sub>A</sub> = 25°C, V<sub>CC</sub> = 9.0 ± 0.1V, 1MΩ - Min, impedance equipment used to test all V<sub>DS</sub>, nominal frequency centers 60, 125, 250, 500, 1k, 3.5k and 10k [Hz], Δf<sub>o</sub>: input frequency deviation of V<sub>D</sub> peak levels at nominal frequency centers.

No.	Item	Symbol	Specifications			Unit	Conditions
			Min	Typ	Max		
1	Supply current	I <sub>CC</sub>			25	mA	Short input terminals
2	f <sub>o</sub> deviation	Δf <sub>o</sub>	30	0	±30	%	Each peak frequency of OUT1 - 7 outputs with IN1:50mVrms, IN2:0V inputs
3	Output DC voltage 1	V <sub>D1</sub>	0.5	0.75	1.1	V	OUT1 - 3 output peak levels with IN:50mVrms, IN2:0V inputs
4	Output DC voltage 2	V <sub>D2</sub>	0.6	0.87	1.2	V	OUT4 - 6 output peak levels with IN:50mVrms, IN2:0V inputs
5	Output DC voltage 3	V <sub>D3</sub>	0.8	1.16	1.5	V	OUT7 output peak level with IN:50mVrms, IN2:0V inputs
6	Output DC voltage 4	V <sub>D4</sub>	2.1	3.1	4.1	V	OUT1 - 3 output peak levels with IN1:50mVrms, IN2:5V inputs
7	Output DC voltage 5	V <sub>D5</sub>	2.7	3.7	4.7	V	OUT4 - 6 output peak level with IN1:50mVrms, IN2:5V inputs
8	Output DC voltage 6	V <sub>D6</sub>	2.9	3.9	4.9	V	OUT7 output peak level with IN1:50mVrms, IN2:5V inputs

## TEST CIRCUIT

