



## Features

- Frequency Range: 2.0~8.0GHz
- Custom design available
- The film,high reliable
- Connectorized package available
- Operating Temperature Range: -55°C~+85°C

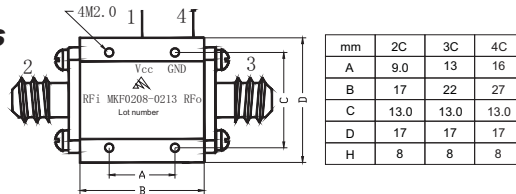
## Electrical (50 Ω, $f_L \sim f_H$ : 2~8GHz, $V_{CC}=+12V$ , $T_A=-55^\circ C \sim +85^\circ C$ )

Model	Parameter	Gain	Gain Flatness	Noise Figure	Input VSWR	Output VSWR	For 1dB Compression	Supply Current	Pack-age
		Gp dB	$\Delta$ Gp dB	F <sub>n</sub> dB	VSWR <sub>i</sub> --	VSWR <sub>o</sub> --	P <sub>-1</sub> * dBm	I <sub>cc</sub> MA	
MKF0208-0110	Typical	11	1.1	2.2	1.8	2.0	10.5	40	2C
	Guaranteed	≥10	≤2	≤2.5Δ	≤2.5:1Δ	≤2.5:1Δ	≥10.0*Δ	≤60	
MKF0208-0210	Typical	21	1.1	2.7	1.8	1.6	10.5	50	2C
	Guaranteed	≥20	≤2	≤3.0Δ	≤2.5:1Δ	≤2.5:1Δ	≥10.0*Δ	≤80	
MKF0208-0310	Typical	32	1.2	2.8	1.8	1.8	10.5	80	3C
	Guaranteed	≥30	≤2	≤3.0Δ	≤2.5:1Δ	≤2.5:1Δ	≥10.0*Δ	≤100	
MKF0208-0213	Typical	21	1.2	2.7	1.8	1.6	13.5	60	2C
	Guaranteed	≥20	≤2	≤3.0Δ	≤2.5:1Δ	≤2.5:1Δ	≥13.0*Δ	≤100	
MKF0208-0313	Typical	32	1.2	2.8	1.8	2.0	13.5	80	3C
	Guaranteed	≥30	≤2	≤3.0Δ	≤2.5:1Δ	≤2.5:1Δ	≥13.0*Δ	≤140	

Note: "\*" f=5GHz. "Δ" T<sub>A</sub>=24±1°C.

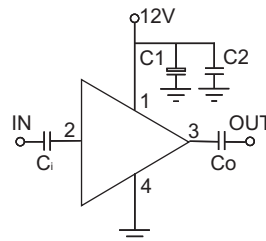
## Maximum Ratings

- Power supply: +14V<sub>DC</sub>
- RF input: +10dBm
- Storage Temp: +125°C



## Application Notes

1. Typical application shown as right, C<sub>1</sub>=3.3~22 μF, C<sub>2</sub>=1000~3300pF.
2. Connectorized package available.
3. See assembly section for outline and mounting information.



## Typical Curves (MKF0208-0213)

