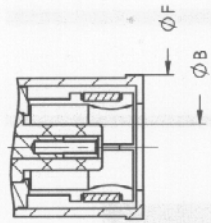


SMB Coaxial Connectors, Mating Area Dimensions

SMB Koaxialkontakte, Abmessungen Steckbereich

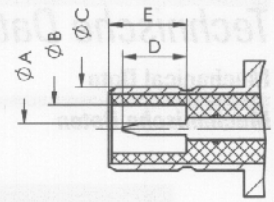
Plug

Stift



Jack

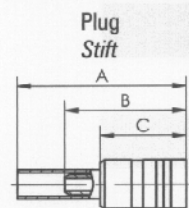
Buchse



	Plug / Stift		Jack / Buchse	
	min.	max.	min.	max.
A	—	—	0,48 (0.019)	0,53 (0.021)
B	—	2,06 (0.081)	2,08 (0.082)	—
C	—	—	3,66 (0.144)	3,71 (0.146)
D	—	—	—	2,97 (0.117)
E	—	—	3,35 (0.132)	3,48 (0.137)
F	—	6,60 (0.260)	—	—

Dimensions Straight Cable Termination (SMB)

Abmessungen gerader Kabelanschluss (SMB)



FCT Part Number FCT Teilenummer	A	B	C	Characteristic Impedance Wellenwiderstand	Suitable cable Verwendbares Kabel
A26J1NA-201-10	19,1 (0.750)	17,8 (0.700)	11,8 (0.463)	50 Ohm	RG316, 188, 174
A26J1NA-205-10	19,1 (0.750)	17,8 (0.700)	11,8 (0.463)		RG316, 188, 174 D.S.
A26P1NA-201-10	19,1 (0.750)	17,8 (0.700)	10,8 (0.425)		RG316, 188, 174
A26P1NA-205-10	19,1 (0.750)	17,8 (0.700)	10,8 (0.425)		RG316, 188, 174
A29J1NA-201-10	19,1 (0.750)	17,8 (0.700)	11,8 (0.463)	MINI / 75 Ohm	RG179, 187
A29J1NA-205-10	19,1 (0.750)	17,8 (0.700)	11,8 (0.463)		RG179, 187 D.S.
A29P1NA-201-10	19,1 (0.750)	17,8 (0.700)	10,8 (0.425)		RG179, 187
A29P1NA-205-10	19,1 (0.750)	17,8 (0.700)	10,8 (0.425)		RG179, 187 D.S.

