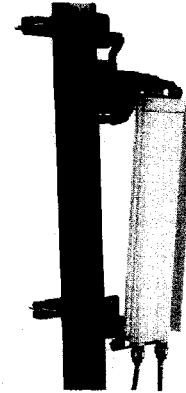


PCS 1900 Planar Antennas (1850 – 1990 MHz) Optional Mounting Brackets

Pole Clamp Mechanical Downtilt Bracket

- Adapts to Entire PCS Antenna Family
- 2 to 5" Diameter Pole
- Stainless Steel
- 9.5 lbs.
- Wind Tunnel Tested to 125 mph Survivability

Antenna length	Downtilt angle
20"	0 – 28°
40"	0 – 15°
60"	0 – 10°
75"	0 – 8°

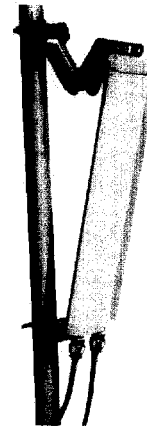


Model number HS0001

Band Strap Mechanical Downtilt Bracket

- Adapts to Entire PCS Antenna Family
- Small Diameter (2" to 5") or Monopole (up to 12" dia.) Type Mounting
- 3-Sector Versions Available
- Two 3/8"-thick Stainless Steel Band Straps
- Stainless Steel
- 1.75 lbs.
- Wind Tunnel Tested to 125 mph Survivability

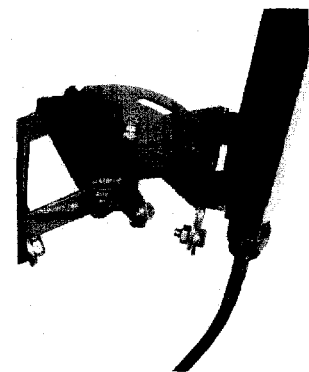
Antenna length	Downtilt angle
20"	0 – 26°
40"	0 – 13°
60"	0 – 9°
75"	0 – 7°



Model number HS0002

Azimuth Pan-tilt Bracket

- Wall or Pole Mount
- Stainless Steel
- Locking Nut to Set Azimuth Angle
- ±40° Adjustment
- 2.5 lbs.
- Wind Tunnel Tested to 125 mph Survivability



Model number HS0003