

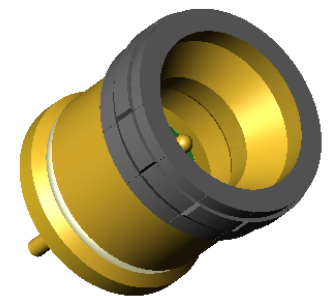
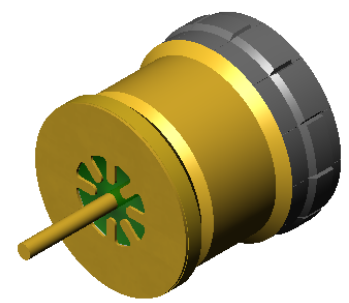
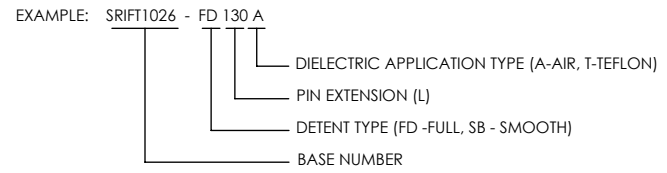
TITANIUM COMPATIBLE LASER WELDABLE 50 OHM FEEDTHROUGH SMPM ADAPTABLE, .012 DIAMETER CENTER CONTACT, PRESS-IN

REVISIONS			
REV	DCN	REVISION DATE	RELEASE APPROVAL
-	INIT RLSE	5/13/15	

- CONFIGURATION FOR INTERFACING TO SMPM "BULLET" STYLE ADAPTER
- DESIGNED TO LASER WELD INTO AN ELECTRONIC CHASSIS
- INDUSTRY STANDARD NICKEL-IRON-COBALT ALLOY CONTACT WITH CORNING 7070 EQUIVALENT GLASS
- INTEGRAL RF GROUNDING TAB FOR EXCELLENT PERFORMANCE OVER TEMPERATURE

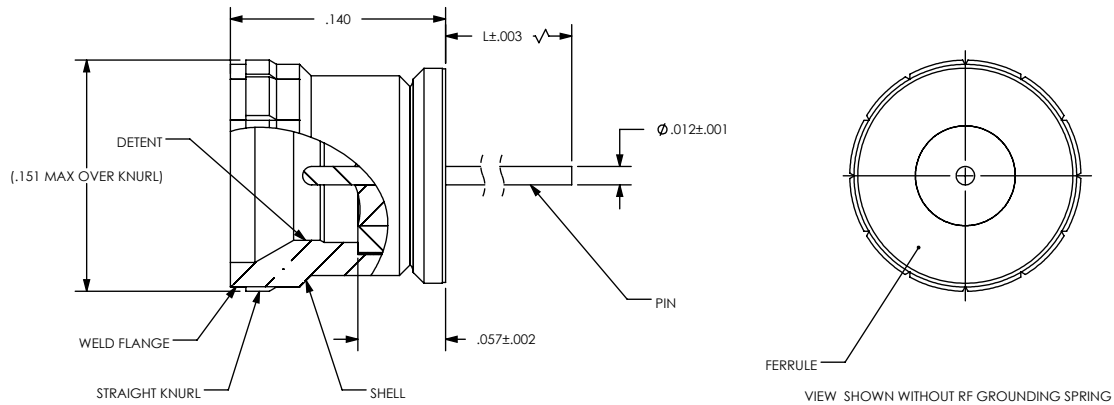
1. LEAK RATE: LESS THAN OR EQUAL TO 1X10E-9 CC/SEC He @ ONE ATMOSPHERE DIFFERENTIAL PRESSURE.
2. NOMINAL IMPEDANCE: 50 OHMS
3. INTERFACE IN ACCORDANCE WITH MIL-STD-348, SMPM.
4. MATERIALS:
 PIN: NICKEL-IRON-COBALT ALLOY IN ACCORDANCE WITH ASTM F15.
 DIELECTRIC: CORNING 7070 EQUIVALENT GLASS (MATCHED SEAL).
 SHELL (WELD FLANGE): TITANIUM UNALLOYED GRADE 2 IN ACCORDANCE WITH ASTM B265 OR B348.
 RF GROUNDING SPRING: BERYLLIUM-COPPER ALLOY 172/173 IN ACCORDANCE WITH ASTM B 194 (NICKEL/GOLD PLATE)
5. FINISH:
 FERRULE AND PIN: NICKEL PLATE PER AMS-QQ-N-290, .000100/.000250 THICK
 GOLD PLATE PER ASTM B488, TYPE III, CODE A, .000050/.000100 THICK.
 GROUNDING SPRING: NICKEL PLATE PER QQ-N-290, .000100/.000250 THICK
 GOLD PLATE PER ASTM B488, TYPE III, CODE A, .000030/.000050 THICK.

6. ORDERING INSTRUCTIONS:
 SPECIFY BASE NUMBER FOLLOWED BY DASH NUMBER INDICATING DETENT TYPE, PIN EXTENSION AND DIELECTRIC APPLICATION TYPE:



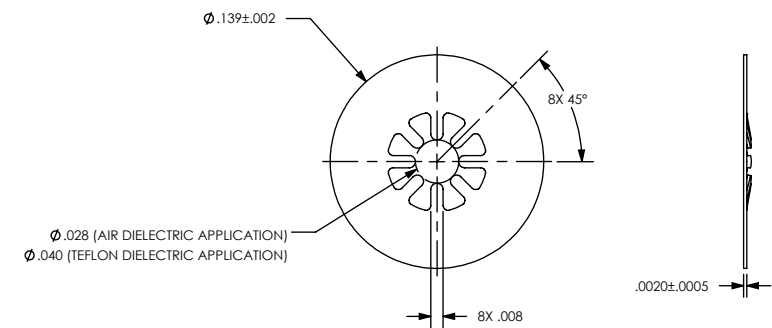
VIEWS SHOWN WITHOUT GROUNDING SPRING

DIMENSIONING IAW ASME Y14.5M-1994 DIMENSIONS APPLY AFTER PROCESSES DIMENSIONS IAW US CUSTOMARY UNITS X ± .1, XX ± .01, XXX ± .005, $\angle \pm .5^\circ$.010 MAX OUTSIDE R, .005 MAX INSIDE R 63 RMS SURFACE FINISH THIRD ANGLE PROJECTION 		SRI HERMETICS a division of WINCHESTER (321) 254-4067 www.srihermetics.com	
TITLE FEEDTHROUGH, SMPM COMPATIBLE, TITANIUM LASER WELDABLE			
SIZE A	DOCUMENT SRIFT1026	REV -	
DO NOT SCALE DRAWING		SCALE 8:1	CAGE CODE 3PJY7
		SHEET 1	OF 2



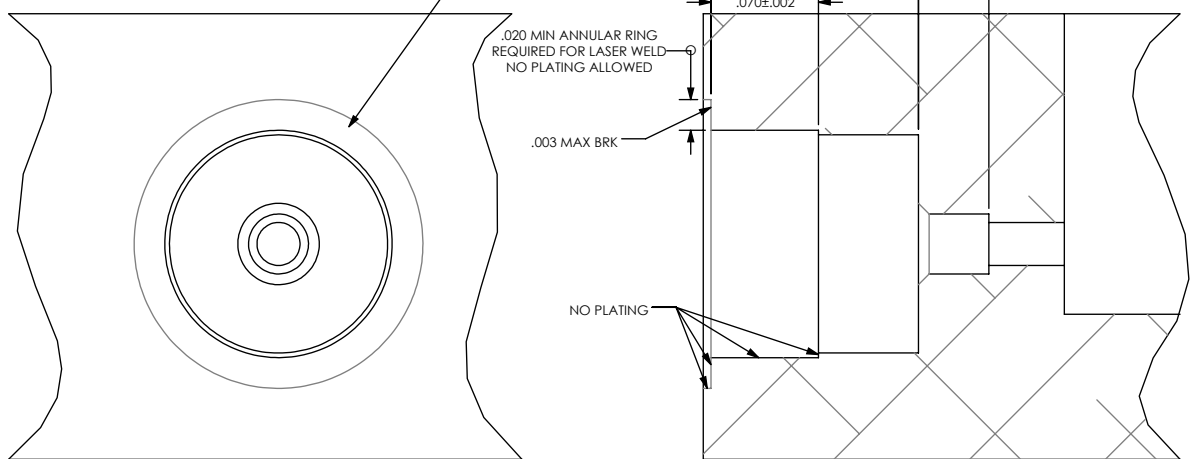
VIEW SHOWN WITHOUT RF GROUNDING SPRING

INSTALL THIS DIRECTION →



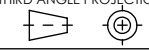
RF GROUNDING SPRING, SHIPPED UNINSTALLED
PART NUMBER SRIFT1007-GS1, AIR DIELECTRIC
PART NUMBER SRIFT1007-GS2, TEFLON DIELECTRIC

- Ø.028±.001 THRU (AIR DIELECTRIC)
- Ø.039±.001 SHOWN (PTFE DIELECTRIC)
- ✓ Ø.053±.002 X 90° (PTFE DIELECTRIC ONLY)
- ┌┐ Ø.142±.001 ▽ SHOWN
- ┌┐ Ø.148±.001 ▽ SHOWN
- ┌┐ ØAS SHOWN ▽.005±.002



RECOMMENDED HOLE DETAIL

DIMENSIONING IAW ASME Y14.5M-1994
DIMENSIONS APPLY AFTER PROCESSES
DIMENSIONS IAW US CUSTOMARY UNITS
X±.1, XX±.01, XXX±.005, $\angle \pm 5^\circ$
.010 MAX OUTSIDE R, .005 MAX INSIDE R
63 RMS SURFACE FINISH
THIRD ANGLE PROJECTION



DO NOT SCALE DRAWING



(321) 254-4067
www.srihermetics.com

TITLE FEEDTHROUGH, SMPM COMPATIBLE, TITANIUM LASER WELDABLE

SIZE DOCUMENT SRIFT1026 REV

SCALE 8:1 CAGE CODE 3PJY7 SHEET 2 OF 2