

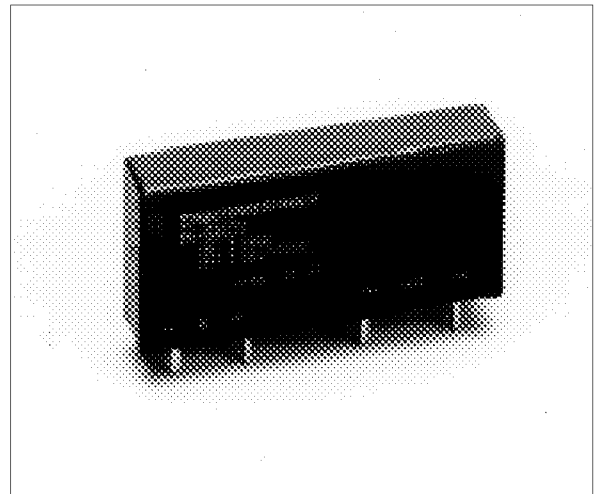
SOLID STATE RELAY

MAXIMUM LOAD CURRENT 3 A

SG SERIES

■ FEATURES

- Conforms to UL, CSA Standards
- Slim, SIL Terminal Type
 - Size: 9.0 (W) × 40.0 (L) × 20.0(H) mm
 - Weight: approximately 13g
- High reliability, long life and maintenance free
- High isolation (between input and output)
 - Dielectric strength: 2,500 Vrms
- Internal zero cross circuit type available
- Internal output surge absorber (varistor) type available.



■ ORDERING INFORMATION

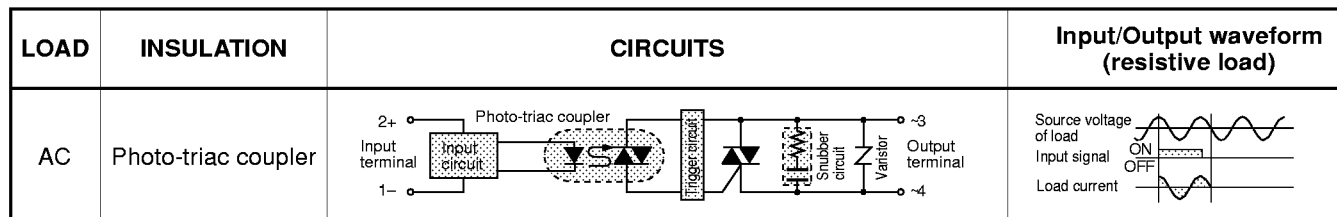
[Example] SG - 12 A 03 C V L
 (a) (b) (c) (d) (e) (f) (g)

(a)	Series Name	SG: SG Series
(b)	Nominal Voltage (Input side)	3 : 3 VDC 5 : 5 VDC 12 : 12 VDC 24 : 24 VDC
(c)	Load Voltage	A: AC type
(d)	Load Current	03 : 3 A rms
(e)	Zero Cross Circuit	Nil : No zero cross tyoe C : Zero cross type
(f)	Varistor	Nil : No varistor type V : Internal varistor type
(g)	Input Terminal Distance	Nil : 7.62 mm L : 5.08 mm

■ SPECIFICATIONS

Item		AC		Remarks
		TYPE 3 A		
INPUT side	Nominal Voltage (DC)	3 V, 5 V, 12 V, 24 V		
	Operate Range	±20% of nominal voltage		
	Must Operate Voltage	80% of nominal voltage		
	Must Release Voltage	Minimum 1 V		
	Input Impedance	3 VDC Type	130Ω ±10%	
5 VDC Type		330Ω ±10%		
12 VDC Type		1.0 kΩ ±10%		
24 VDC Type		2.2 kΩ ±10%		
OUTPUT side	Load Voltage Range	75 to 265 Vrms		
	Maximum Load Current	3.0 Arms		CHARACTERISTIC DATA
	Minimum Load Current	10 mArms		
	1 Cycle Surge Current	132 A (60 Hz)		
	Max. Off-state Leakage Current	2.5 mArms (at 100 Vrms 60 Hz) 5.0 mArms (at 200 Vrms 60 Hz)		
	Max. Off-state Voltage Drop	1.5 Vrms		at max. load current
Max. Operate Time	at no zero cross type	1 ms		
	at zero cross type	1/2 cycle + 1 ms		
Max. Release Time		1/2 cycle + 1 ms		
Insulation Resistance		Minimum 1,000 MΩ (at 500 VDC)		for input-output
Dielectric Strength		2,500 Vrms for 1 minute		for input-output
Operating Temperature Range		-30°C to + 85°C		
Storage Temperature Range		-40°C to + 100°C		
Case Color		Black		
Weight		Approximately 13g		

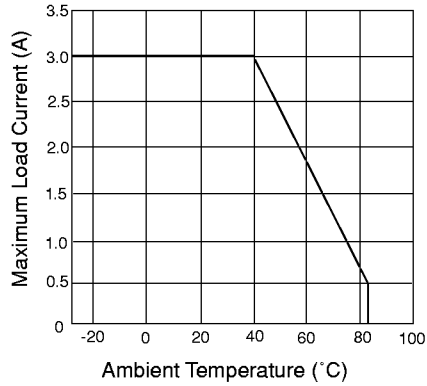
■ BLOCK DIAGRAM



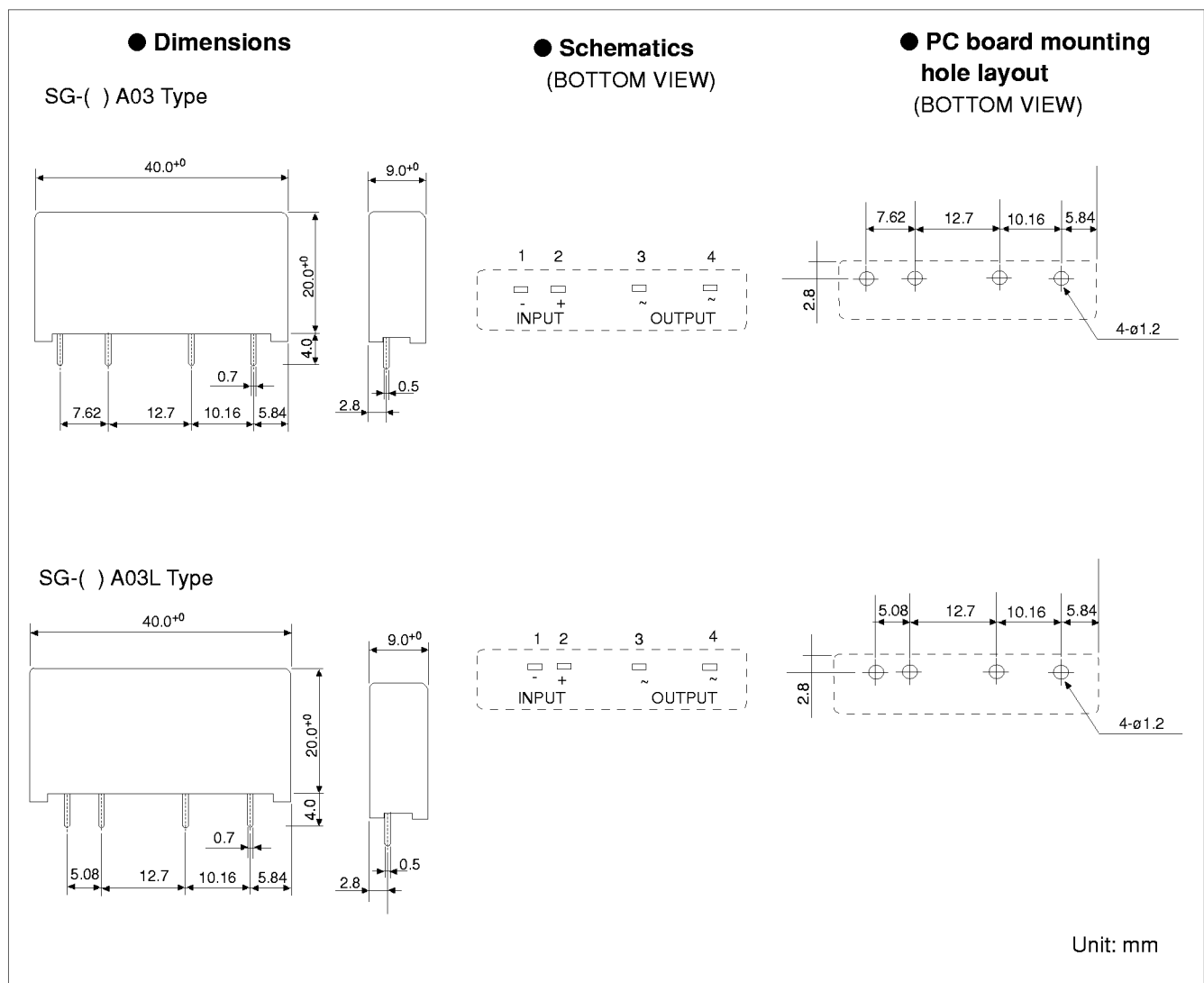
CHARACTERISTIC DATA

SG-A03 (3.0A type)

Ambient Temperature vs. Maximum Load Current



DIMENSIONS



■ NOTES

1. Polarity of terminals are pre-determined. Please design accordingly.
2. If using non-Varistor enclosure type please use Varistor type as in Figure 1.

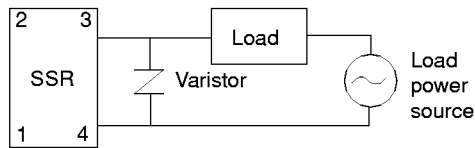


Figure 1

Fujitsu Takamisawa International Headquarter Offices

www.fujitsu.takamisawa.com

Japan

Fujitsu Takamisawa Component Limited
Global Marketing and Sales
Gotanda-Chuo Building
3-5, Higashigotanda 2-chome, Shinagawa-ku
Tokyo 141, Japan
Tel: (81-3) 5449-7010
Fax: (81-3) 5449-2626

North and South America

Fujitsu Takamisawa America, Inc.
250 E. Caribbean Drive
Sunnyvale, CA 94089 U.S.A.
Tel: (1-408) 745-4900
Fax: (1-408) 745-4970

Europe

Fujitsu Takamisawa Europe B.V.
Diamantlaan 25
2132 WV Hoofddorp
Netherlands
Tel: (31-23) 5560910
Fax: (31-23) 5560950

Asia Pacific

Fujitsu Takamisawa Asia Pacific Pte. Ltd.
102E Pasir Panjang Road
#04-01 Citilink Warehouse Complex
Singapore 118529
Tel: (65) 375-8560
Fax: (65) 273-3021