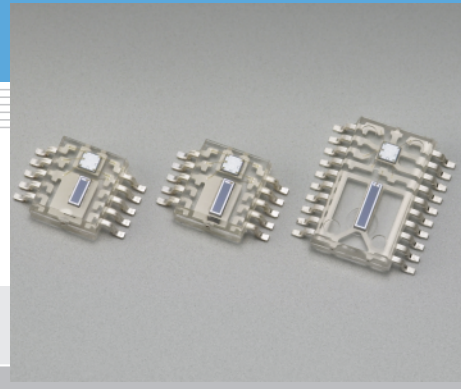


Photo IC for laser beam synchronous detection

S6174, S6874-10, S8041

Photo IC for start timing detection for laser printers, etc.



S6174, S6874-10, S8041 are designed for laser beam synchronous detection in laser printers, etc. These photo ICs use a single-element photodiode and a signal processing circuit integrated in a small package. For more precision printing, Hamamatsu also provides S5049 series photo ICs using a dual-element photodiode.

Features

- Small plastic package: 4.5 × 5.5 mm (S6174, S6874-10)
- Built-in signal processing circuit
- Photodiode length
 - S6174 : 1.65 mm
 - S6874-10: 2.17 mm
 - S8041 : 3.0 mm

Applications

- Print start timing detection for laser printers, digital copiers, etc.

■ Absolute maximum ratings (Ta=25 °C)

Parameter	Symbol	S6174	S6874-10	S8041	Unit
Supply voltage	Vcc		-0.5 to +7		V
Power dissipation *1	P		150		mW
Output voltage	Vo		-0.5 to Vcc		V
Output current	Io		20		mA
Ro terminal current	IRO		2		mA
Operating temperature	Topr		-25 to +80		°C
Storage temperature	Tstg		-40 to +85		°C
Soldering	-		230 °C, 5 s		-

*1: Derate power dissipation at a rate of 2 mW/°C above Ta=25 °C.

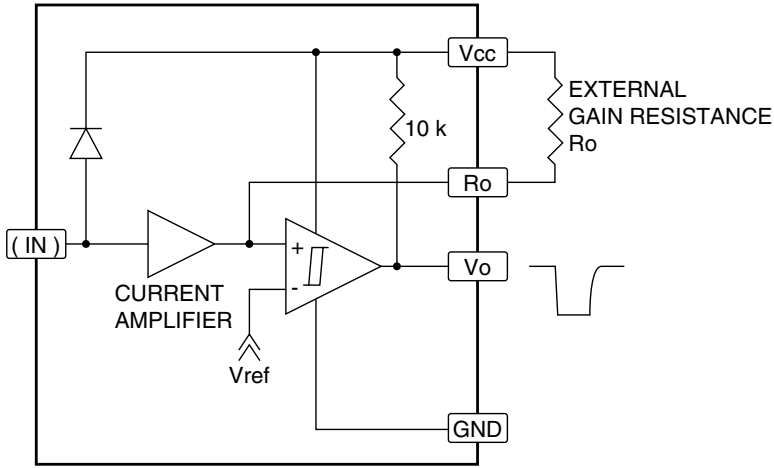
■ Electrical and optical characteristics (Ta=25 °C, λ=780 nm, Vcc=Vcc1=Vcc2=5 V, Ro=5.1 kΩ, unless otherwise noted)

Parameter	Symbol	Condition	S6174			S6874-10			S8041			Unit
			Min.	Typ.	Max.	Min.	Typ.	Max.	Min.	Typ.	Max.	
Supply voltage	Vcc		4.5	5.0	5.5	4.5	5.0	5.5	4.5	5.0	5.5	V
High level output voltage	VOH	Pin=0	4.9	-	-	4.9	-	-	4.9	-	-	V
Low level output voltage	VOL	Pin=200 μW, IoL=10 mA	-	0.4	0.6	-	0.4	0.6	-	0.4	0.6	V
Current consumption	ICC	Pin=0, at high level output	-	-	5	-	-	5	-	-	5	mA
		Pin=200 μW	-	-	6	-	-	6	-	-	6	mA
Threshold input power	PTH		55	70	85	55	70	85	60	75	90	μW
H→L propagation delay time	tPHL	Pin=200 μW Duty ratio 1: 1 RL=510 Ω, CL=15 pF *2	-	-	400	-	-	400	-	-	400	ns
L→H propagation delay time	tPLH		-	-	600	-	-	600	-	-	600	
Rise time	tr		-	-	200	-	-	200	-	-	200	
Fall time	tf		-	-	100	-	-	100	-	-	100	

*2: Measured by pulse-driving a laser diode. Rise time (tr) and fall time (tf) of input light waveform are less than 1 ns.

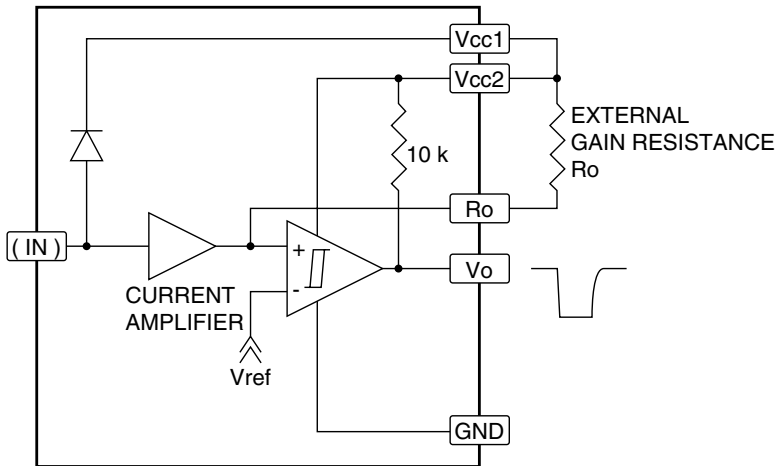
■ Block diagram

S6174, S6874-10



KPIC0020EA

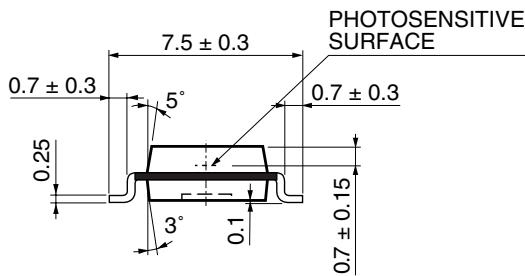
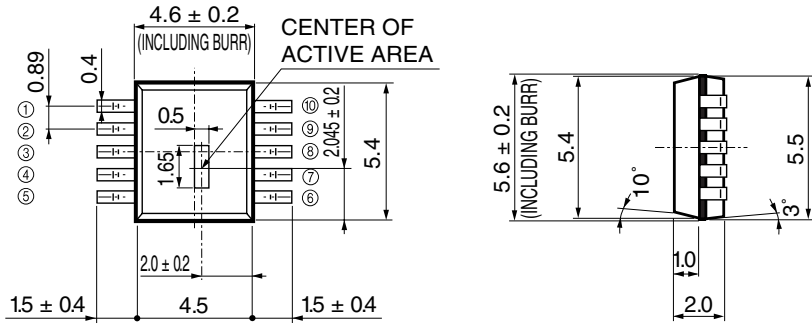
S8041



KPIC0058EA

■ Dimensional outlines (unit: mm)

S6174

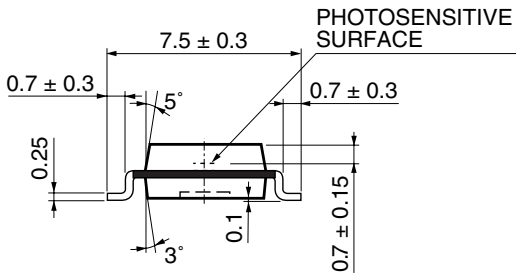
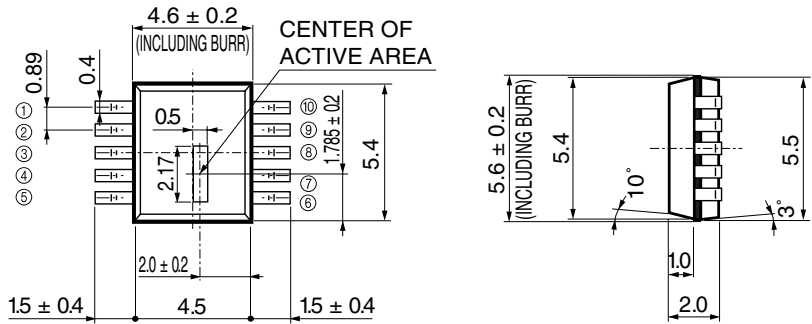


- ① Vo ⑥ NC
- ② Ro ⑦ NC
- ③ Vcc ⑧ NC
- ④ NC ⑨ (IN)
- ⑤ NC ⑩ GND

Tolerance unless otherwise noted: ± 0.1 , $\pm 2^\circ$
Shaded area indicates burr.

KPICA0011EB

S6874-10

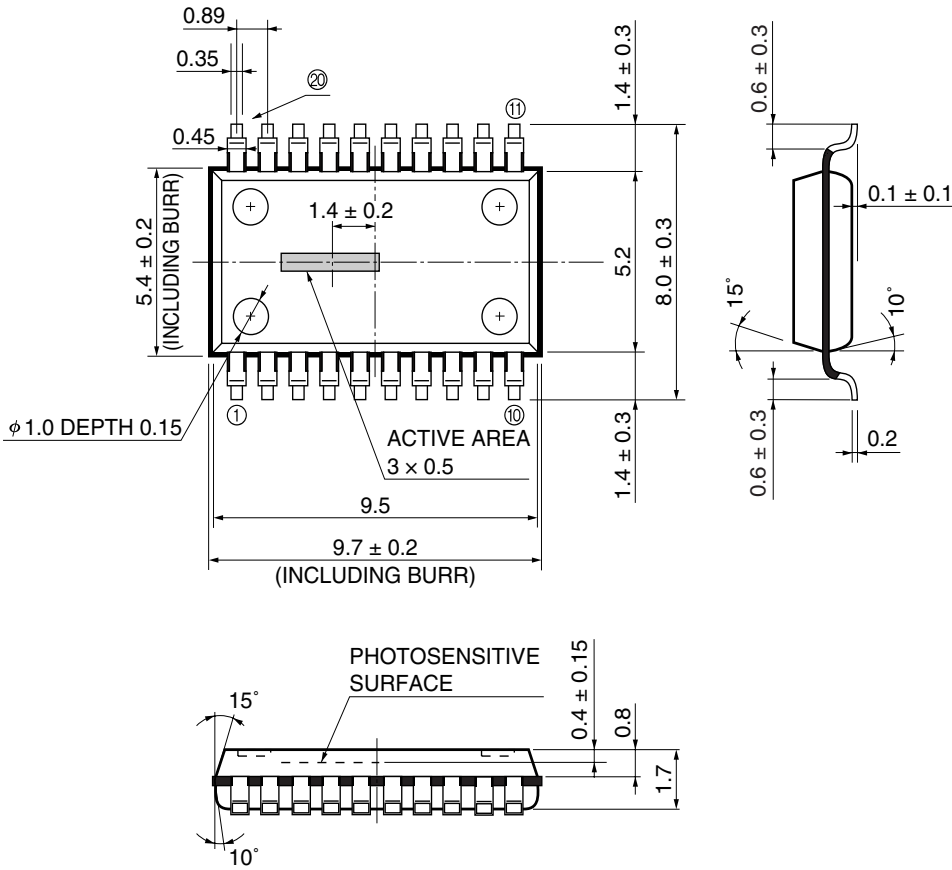


- ① Vo ⑥ NC
- ② Ro ⑦ NC
- ③ Vcc ⑧ NC
- ④ NC ⑨ (IN)
- ⑤ NC ⑩ GND

Tolerance unless otherwise noted: ± 0.1 , $\pm 2^\circ$
Shaded area indicates burr.

KPICA0033EA

S8041



①		⑪	Vo
②		⑫	(GND)
③	Vcc1	⑬	Ro
④		⑭	Vcc2
⑤		⑮	Vcc1
⑥		⑯	
⑦	IN (PD)	⑰	
⑧	(GND)	⑱	
⑨	(GND)	⑲	
⑩	GND	⑳	

Tolerance unless otherwise noted: ± 0.1 , $\pm 2^\circ$
 Shaded area indicates burr.
 Pins ⑧, ⑨ and ⑫ should be connected to pin ⑩ on the PC board.

KPICA0032EA

HAMAMATSU

Information furnished by HAMAMATSU is believed to be reliable. However, no responsibility is assumed for possible inaccuracies or omissions. Specifications are subject to change without notice. No patent rights are granted to any of the circuits described herein. ©2001 Hamamatsu Photonics K.K.

HAMAMATSU PHOTONICS K.K., Solid State Division

1126-1 Ichino-cho, Hamamatsu City, 435-8558 Japan, Telephone: (81) 053-434-3311, Fax: (81) 053-434-5184, <http://www.hamamatsu.com>

U.S.A.: Hamamatsu Corporation: 360 Foothill Road, P.O.Box 6910, Bridgewater, N.J. 08807-0910, U.S.A., Telephone: (1) 908-231-0960, Fax: (1) 908-231-1218

Germany: Hamamatsu Photonics Deutschland GmbH: Arzbergerstr. 10, D-82211 Herrsching am Ammersee, Germany, Telephone: (49) 08152-3750, Fax: (49) 08152-2658

France: Hamamatsu Photonics France S.A.R.L.: 8, Rue du Saule Trapu, Parc du Moulin de Massy, 91882 Massy Cedex, France, Telephone: 33-(1) 69 53 71 00, Fax: 33-(1) 69 53 71 10

United Kingdom: Hamamatsu Photonics UK Limited: 2 Howard Court, 10 Tewin Road, Welwyn Garden City, Hertfordshire AL7 1BW, United Kingdom, Telephone: (44) 1707-294888, Fax: (44) 1707-325777

North Europe: Hamamatsu Photonics Norden AB: Smidesvägen 12, SE-171 41 Solna, Sweden, Telephone: (46) 8-509-031-00, Fax: (46) 8-509-031-01

Italy: Hamamatsu Photonics Italia S.R.L.: Strada della Moia, 1/E, 20020 Arese, (Milano), Italy, Telephone: (39) 02-935-81-733, Fax: (39) 02-935-81-741