

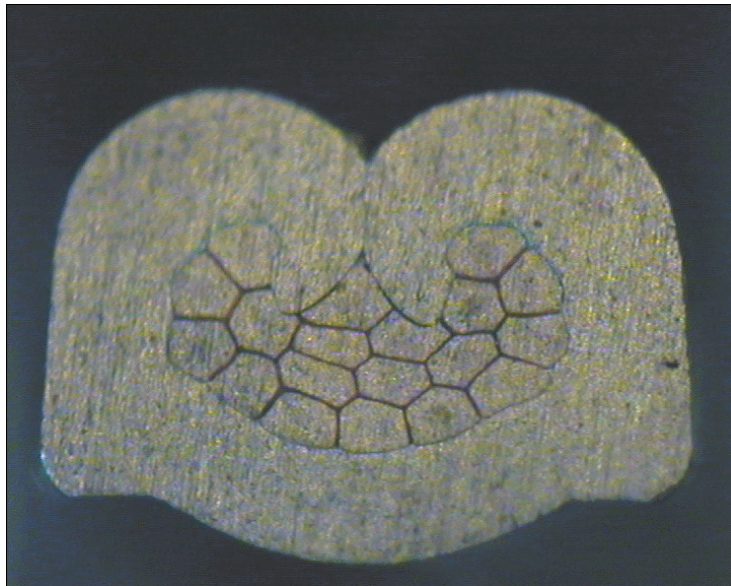
DELPHI PN 13644607



cable:
 $0,50 \text{ mm}^2 = 19 \times 0,19 \text{ mm}$

crimp height:
1,30 mm

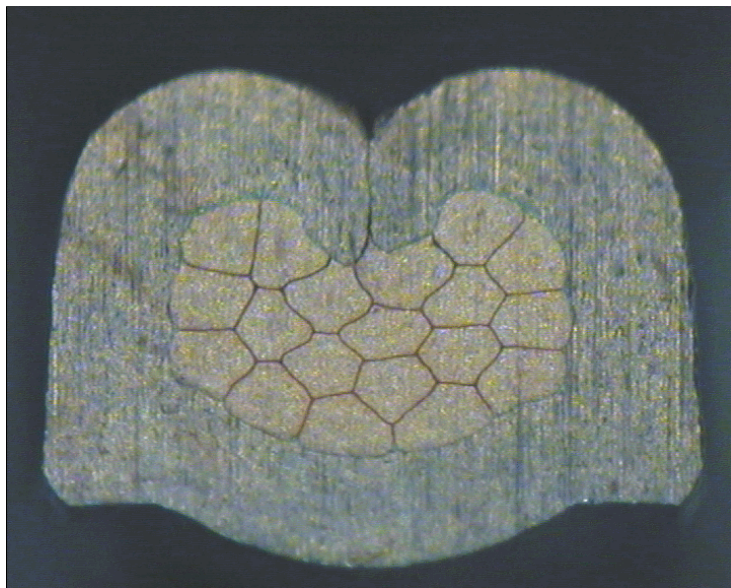
crimp width:
1,90 mm



cable:
 $0,75 \text{ mm}^2 = 19 \times 0,23 \text{ mm}$

crimp height:
1,40 mm

crimp width:
1,95 mm



cable:
 $1,00 \text{ mm}^2 = 19 \times 0,26 \text{ mm}$

crimp height:
1,50 mm

crimp width:
1,95 mm