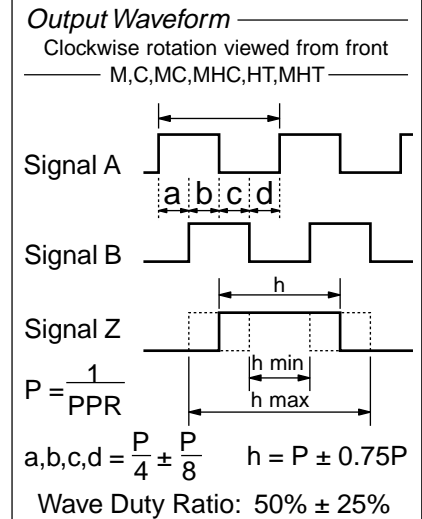
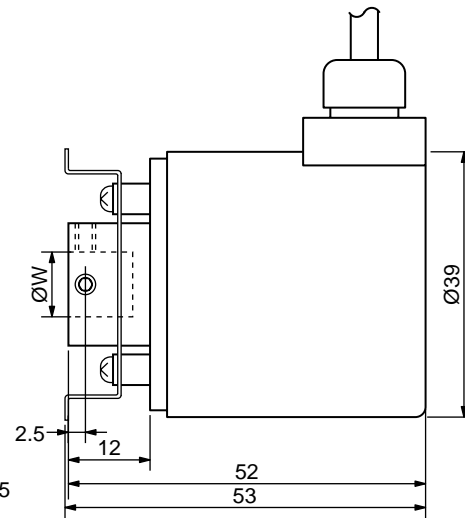
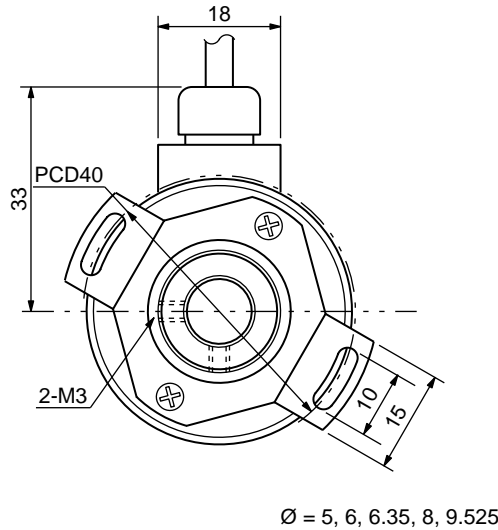


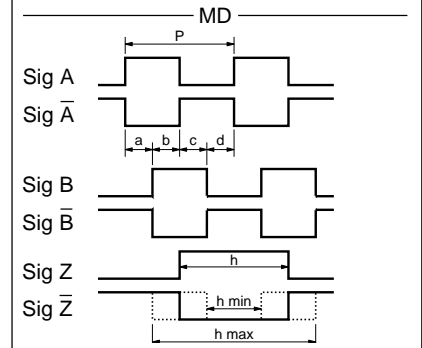
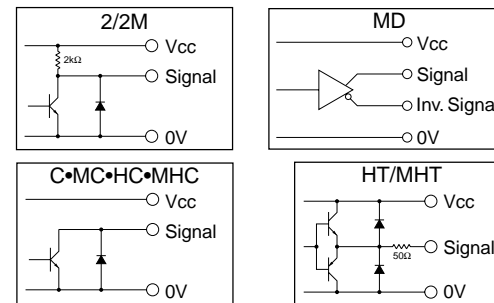
**IP65
Dust Proof
Drip Proof**



Electrical Specifications

TYPE		2/2M	C/MC	HC/MHC	MT/MHT	MD
Supply Voltage		4.5 ~ 13.2VDC		10.6 to 26.4 VDC		5.0 VDC ±5%
Current		50mA max	60mA max			150mA max
Output Voltage	H	Vcc -1V			Vcc -3V	≥ 2.5V
	L	≤ 0.5V		≤ 3.0V	≤ 0.5V	
Sink Current		20mA max		40mA max	20mA max	
Signal Risetime		≤ 1µS				≤ 200 nS
Freq. Response		200kHz				

Output Circuits



Mechanical

- Max Shaft Load, radial: 2.0 kgf axial: 1.0 kgf
- Moment of Inertia: 12.0 g•cm²
- Angular Acceleration: 1x10⁵ rad/S²
- Max Slewing Speed: 6000 RPM
- Starting Torque: 50 gf•cm max.
- Rotational Life: 1 x 10⁸ rpm•hrs

Environmental

- Operating Temp: -10° to +70° C
- Storage Temp: -30° to +80° C
- Humidity: ≤ 85% RH, no condensation
- Vibration: 10~55 Hz, 1.5 mm, 2 hrs
- Shock: 30G, 11ms, 3 axes, 3 reps
- Protection: IP65

Standard Resolutions

NHF-XXX			
003	30 P/R	0646	646 P/R
01	100 P/R	08	800 P/R
02	200 P/R	09	900 P/R
025	250 P/R	10	1000 P/R
0256	256 P/R	1024	1024 P/R
03	300 P/R	12	1200 P/R
036	360 P/R	15	1500 P/R
04	400 P/R	18	1800 P/R
05	500 P/R	20	2000 P/R
0512	512 P/R	2048	2048 P/R
06	600 P/R	25	2500 P/R

Ordering Information

NHF-□□□-□□□□-□□□□-□□□□

- Resolution(P/R) Channels: 2=A/B M=Index Channel
- Output Type:
" " = TTL Voltage
C = Open Collector
T = Push-Pull
D = Diff Driver
- Shaft Bore:
500 = Ø5mm
600 = Ø6mm
635 = Ø6.35mm
800 = Ø8mm
- Cable Length:
050 = 0.5m
100 = 1.0m
300 = 3.0m

CUI Stack, Inc.
9615 SW Allen Blvd. #103
Beaverton, OR 97005
Tel: 503/643-4899 FAX: 503/643-6129

DRAWN BY JAS	UPDATED 02/05/01	CHECKED 02/05/01	RELEASED
PART NO. NHF-XXX-2XXX-XXX-XXX			REV. A