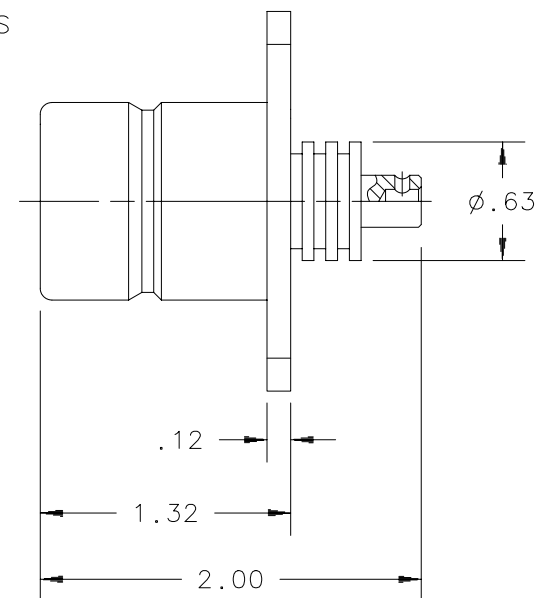
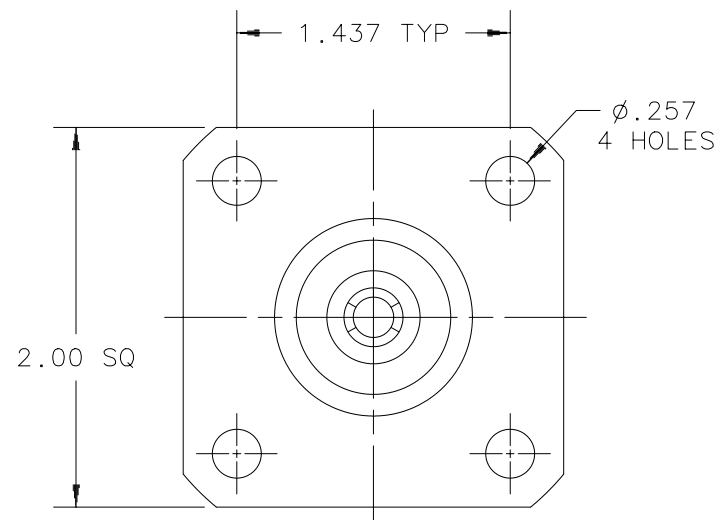


This document, including the design, configuration and mechanical features revealed herein are the sole, confidential and proprietary property of Tru-Connector Corporation. Reproduction or use thereof, in whole or part, is prohibited without the prior written consent of Tru-Connector Corporation.

REV	DESCRIPTION	DATE	APPROVAL
/	ORIGINAL ISSUE	1/28/97	RMK
B	SEE ECO 2323 FOR CHANGES	9/8/03	RMK


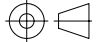


# MATERIAL:

FEMALE CONTACT: BERYLLIUM COPPER  
 OTHER METAL PARTS: BRASS  
 INSULATOR: TEFLON

# FINISH:

CONTACT: SILVER PLATED  
 OTHER METAL PARTS: NICKEL PLATED

Material:	UNLESS OTHERWISE SPECIFIED: DIMENSIONS ARE IN INCHES CHAMFER FIRST THREAD 45° DIMENSIONS BEFORE PLATING  TOLERANCES: FRACTIONS: ±1/64 .XX : ±.01 .XXX: ±.005 ANGLES: ±1/2° MACHINED SURFACES 63 ✓	DRAWN BY Warren Whitten	DATE 1/28/97	 TRU-CONNECTOR CORPORATION 245 LYNNFIELD STREET PEABODY, MASSACHUSETTS	
		ENG APPROVAL Koch	DATE 1/28/97		
		MFG APPROVAL	DATE	TITLE	
		OTHER APPROVAL	DATE	CONNECTOR, COAXIAL, RF SQS(f) RECEPTACLE, PANEL FRONT MOUNTING	
THIRD ANGLE PROJECTION 	REFERENCE	SIZE A	CAGE CODE 92180	DWG NO. TRU-7776	REV B
CAD FILE:			SCALE 1.5 X	SHEET 1 of 1	