

AC feedthrough capacitors

- EN 132400 approval
 - 10 to 300A current ratings
 - 5kV pulse test capability
 - Class Y2 capacitors
- nach EN 132400 geprüft
 - Nennströme von 10 bis 300A
 - für 5kV-Pulsprüfungen geeignet
 - Kondensator der Klasse Y2
- Homologation EN 132400
 - De 10 à 300A
 - Possibilité de test d'impulsions 5kV
 - Condensateurs de classe Y2



Feedthrough capacitor selection table

Choose the AC feedthrough capacitor FN 751x offering the required current rating and characteristics. Schaffner's numbering scheme provides a quick verification of selection. For example: FN 7510-32/M4 is a low capacitance (4.7nF) AC feedthrough capacitor with a 32A current rating, fitted with M4 terminals.

Approvals

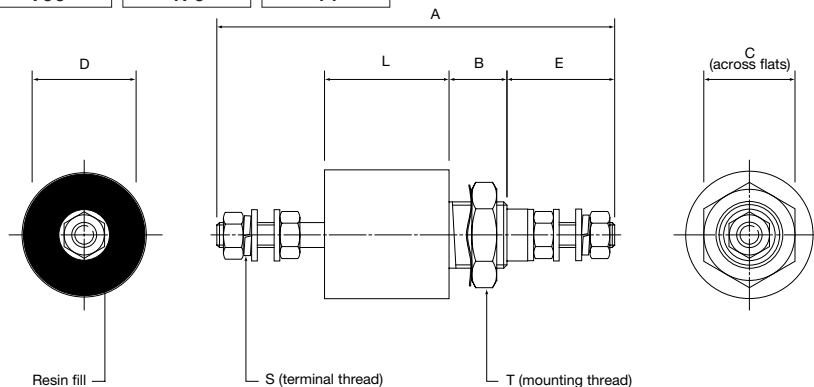


Part number	Current rating A @ 60°C*	C value nF	I (max) leakage mA
FN 7510-10/M3	10	2.2	0.21
FN 7511-10/M3	10	4.7	0.44
FN 7510-16/M4	16	4.7	0.44
FN 7511-16/M4	16	10	0.94
FN 7512-16/M4	16	47	4.4
FN 7513-16/M4	16	100	9.4
FN 7510-20/M4	20	4.7	0.44
FN 7510-32/M4	32	4.7	0.44
FN 7511-32/M4	32	10	0.94
FN 7512-32/M4	32	33	3.1
FN 7513-32/M4	32	47	4.4
FN 7514-32/M4	32	100	9.4
FN 7510-63/M6	63	10	0.94
FN 7511-63/M6	63	47	4.4
FN 7512-63/M6	63	100	9.4
FN 7510-100/M8	100	47	4.4
FN 7511-100/M8	100	100	9.4
FN 7512-100/M8	100	220	21
FN 7513-100/M8	100	470	44

Part number	Current rating A @ 60°C*	C value nF	I (max) leakage mA
FN 7510-200/M10	200	100	9.4
FN 7511-200/M10	200	220	21
FN 7512-200/M10	200	470	44
FN 7512-200/M10A	200	470	44
FN 7512-200/M10B	200	470	44
FN 7513-200/M10	200	1000	94
FN 7513-200/M10A	200	1000	94
FN 7513-200/M10B	200	1000	94
FN 7510-250/M12	250	100	9.4
FN 7511-250/M12	250	220	21
FN 7512-250/M12	250	470	44
FN 7513-250/M12	250	1000	94
FN 7510-300/M16	300	100	9.4
FN 7511-300/M16	300	220	21
FN 7512-300/M16	300	470	44
FN 7513-300/M16	300	1000	94

*40°C for 250/300A capacitors

Mechanical data

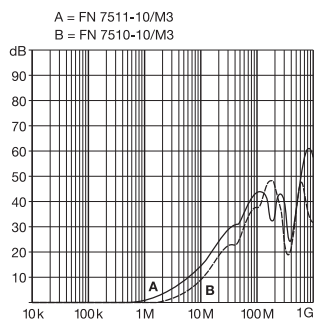


Additional specifications

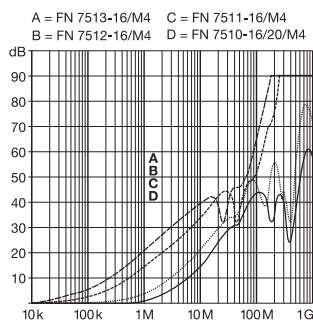
Rated voltage: 250VAC @ 50/60Hz (EN 132400 approval)
300VAC @ 50/60Hz (other applications)
Test voltage: 3000VDC for 2 seconds

Capacitor class: Y2
Insulation resistance: for capacitance < 0.33μF, R > 15000MΩ
for capacitance > 0.33μF, R > 5000s
Measured at: 100VDC after 60s, @ 20°C

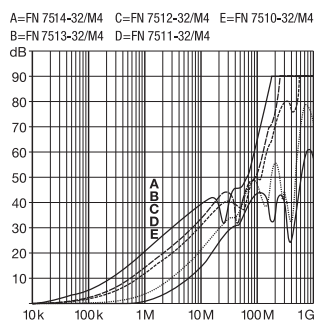
FN 751X insertion loss (typical, 50Ω system)



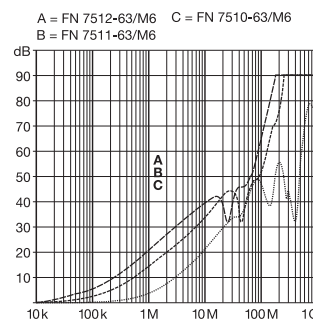
AC Capacitors 10 A



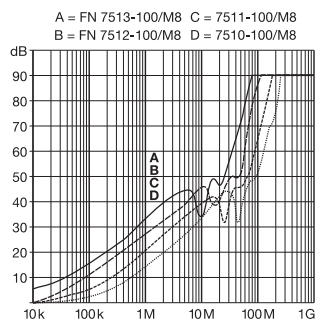
AC Capacitors 16 A



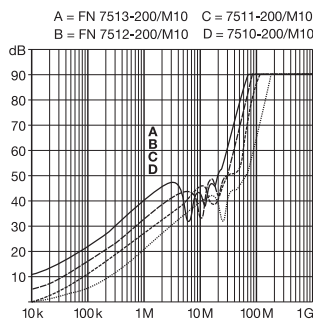
AC Capacitors 32 A



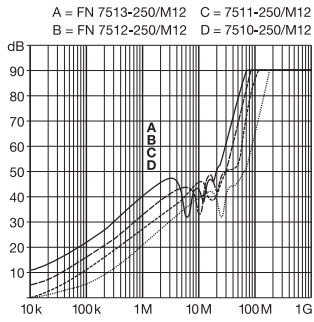
AC Capacitors 63 A



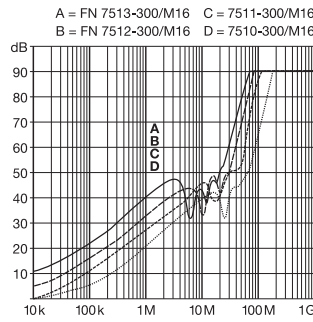
AC Capacitors 100 A



AC Capacitors 200 A



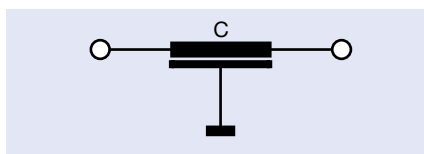
AC Capacitors 250 A



AC Capacitors 300 A

Electrical schematic

(see tables for component values)



Part number	Dimensions (mm)						Thread		Torque		Weight (g)
	Diameter (D) ±0.5mm	Length (L) ±1mm	A ±1mm	B ±1mm	C ±2mm	E ±2mm	Mounting T	Terminal stud S	on T Nm	on S Nm	
FN 7510-10/M3	15	18	57	10	13	16	M10 x 1	M3	3	0.5	22
FN 7511-10/M3	15	18	57	10	13	16	M10 x 1	M3	3	0.5	22
FN 7510-16/M4	20	18	63	12	17	18	M12 x 1	M4	4	1.2	36
FN 7511-16/M4	20	18	63	12	17	18	M12 x 1	M4	4	1.2	36
FN 7512-16/M4	20	30	75	12	17	18	M12 x 1	M4	4	1.2	60
FN 7513-16/M4	25	30	77	14	22	18	M16 x 1	M4	7	1.2	75
FN 7510-20/M4	20	18	63	12	17	18	M12 x 1	M4	4	1.2	36
FN 7510-32/M4	20	18	63	12	17	18	M12 x 1	M4	4	1.2	36
FN 7511-32/M4	20	18	63	12	17	18	M12 x 1	M4	4	1.2	36
FN 7512-32/M4	20	30	75	12	17	18	M12 x 1	M4	4	1.2	60
FN 7513-32/M4	20	30	75	12	17	18	M12 x 1	M4	4	1.2	60
FN 7514-32/M4	25	30	77	14	22	18	M16 x 1	M4	7	1.2	75
FN 7510-63/M6	25	30	96	14	22	26	M16 x 1	M6	7	2.5	85
FN 7511-63/M6	25	30	96	14	22	26	M16 x 1	M6	7	2.5	85
FN 7512-63/M6	25	30	96	14	22	26	M16 x 1	M6	7	2.5	85
FN 7510-100/M8	32	33	113	16	27	32	M20 x 1	M8	10	5	160
FN 7511-100/M8	32	33	113	16	27	32	M20 x 1	M8	10	5	160
FN 7512-100/M8	38	33	116	19	27	32	M24 x 1	M8	14	5	200
FN 7513-100/M8	38	50	133	19	27	32	M24 x 1	M8	14	5	260
FN 7510-200/M10	38	33	130	19	27	40	M24 x 1	M10	14	8	200
FN 7511-200/M10	38	33	130	19	27	40	M24 x 1	M10	14	8	200
FN 7512-200/M10	54	50	147	19	40	40	M27 x 1.5	M10	16	8	560
FN 7512-200/M10A	54	50	147	19	40	40	M30 x 1.5	M10	20	8	560
FN 7512-200/M10B	54	50	147	19	40	40	M32 x 1.5	M10	24	8	560
FN 7513-200/M10	54	50	147	19	40	40	M27 x 1.5	M10	16	8	560
FN 7513-200/M10A	54	50	147	19	40	40	M30 x 1.5	M10	20	8	560
FN 7513-200/M10B	54	50	147	19	40	40	M32 x 1.5	M10	24	8	560
FN 7510-250/M12	54	42	148	19	40	46	M32 x 1.5	M12	24	11	600
FN 7511-250/M12	54	42	148	19	40	46	M32 x 1.5	M12	24	11	600
FN 7512-250/M12	54	54	160	19	40	46	M32 x 1.5	M12	24	11	650
FN 7513-250/M12	54	54	160	19	40	46	M32 x 1.5	M12	24	11	650
FN 7510-300/M16	54	42	148	19	40	46	M32 x 1.5	M16	24	20	750
FN 7511-300/M16	54	42	148	19	40	46	M32 x 1.5	M16	24	20	750
FN 7512-300/M16	54	54	160	19	40	46	M32 x 1.5	M16	24	20	850
FN 7513-300/M16	54	54	160	19	40	46	M32 x 1.5	M16	24	20	850