

4

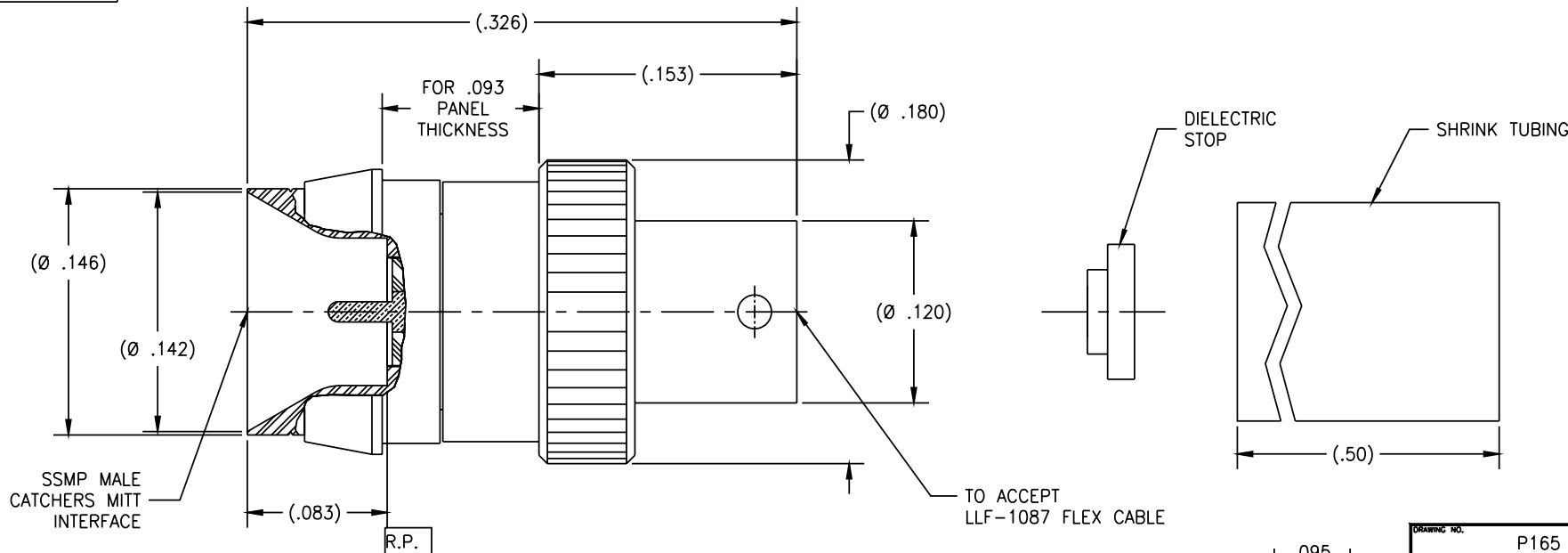
3

2

1

P/N	APPLICABLE NOTE(S)
-1CC	1,2,3,4

REVISIONS				
ZONE	REV	DESCRIPTION	DATE	BY
-	-	-	-	-



NOTE(S):

1. MATERIAL(S):

- 1.1 BODY: 303 SST PER ASTM A-582.
- 1.2 SNAP RING & CENTER CONDUCTOR: BeCu ALLOY PER ASTM B-196.
- 1.3 INSULATOR: PTFE PER ASTM D-1710.
- 1.4 SHRINK TUBING: HEAT SHRINKABLE INSULATION SLEEVE PER AMS DTL-23053.

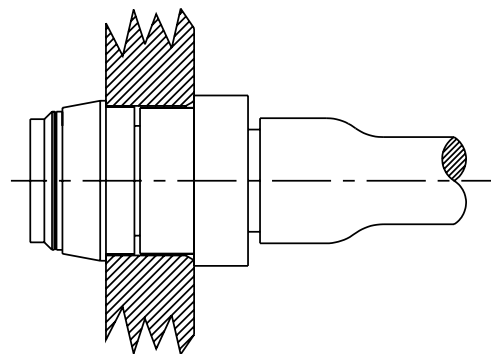
2. FINISH(ES):

- 2.1 BODY & CENTER CONDUCTOR: GOLD PLATE PER ASTM B-488 OVER NICKEL PLATE PER AMS-QQ-N-290.
- 2.2 SNAP RING: NICKEL PLATE PER AMS-QQ-N-290.
- 2.3 INSULATOR & SHRINK TUBING: NONE

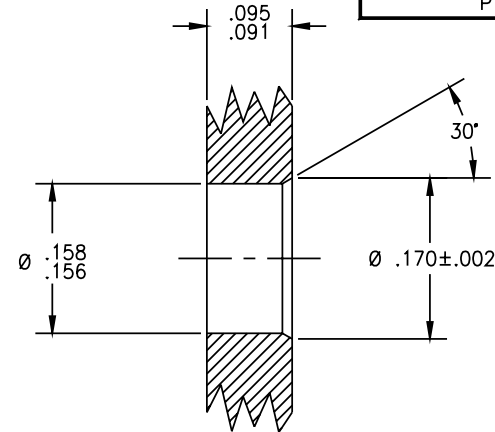
3. ELECTRICAL PERFORMANCE(S):

- 3.1 FREQUENCY : DC - 26.5 GHz.
- 3.2 VSWR: 1.15:1 MAX TO 18.0 GHz.
1.25:1 MAX TO 26.5 GHz.
- 3.3 INSERTION LOSS: 0.10 dB MAX TO 18.0 GHz.
0.20 dB MAX 18.0 TO 26.5 GHz.

4. ALL ITEMS TO BE PACKAGED AND SHIPPED UNASSEMBLED.



INSTALLED VIEW



MOUNTING PANEL

DRAWING NO.	P165	REV.	-
-------------	------	------	---

TOLERANCES AND NOTES
EXCEPT AS NOTED

DIMENSIONS ARE IN INCHES.
LINEAR .XXX ±.015
ANGULAR ± 1/2°
FRACTION ± 1/32

1. MACHINE FINISH: \sqrt{R}
2. BREAK ALL SHARP EDGES .003 MAX.
3. MACHINED FILLETS .005 MAX.
4. MACHINED SURFACES SQUARE TO RESPECTIVE AXIS WITHIN .005 INCHES PER INCH.
5. MACHINED DIAMETERS CONCENTRIC WITHIN .002 T.I.R.
6. DIMENSIONS TO BE MET BEFORE PLATING.
7. CHAMFER ALL THREADS 45°.
8. THREADS PER H-20
9. REMOVE FRAYED EDGES ON TEFLON.
10. REMOVE ALL BURRS.

NOTICE

THIS DRAWING EMBODIES A CONFIDENTIAL PROPRIETARY DESIGN ORIGINATED BY TENSOLITE COMPANY AND ALL DESIGN, MANUFACTURING, REPRODUCTION, USE AND SALE RIGHTS REGARDING THE SAME ARE EXPRESSLY RESERVED. IT IS SUBMITTED UNDER A CONFIDENTIAL RELATIONSHIP FOR A SPECIFIED PURPOSE AND THE RECIPIENT AGREES BY ACCEPTING THIS DRAWING NOT TO SUPPLY OR DISCLOSE ANY INFORMATION REGARDING IT TO ANY UNAUTHORIZED PERSON TO INCORPORATE IN OTHER PRODUCTS ANY SPECIAL FEATURES PECULIAR TO THIS DESIGN. ALL PATENT RIGHTS HERETO ARE EXPRESSLY RESERVED BY TENSOLITE COMPANY, LONG BEACH, CALIFORNIA 90810.

SEE NOTE(S)	-	SEE NOTE(S)	-
MATERIAL	SIZE	SPECIFICATION	PROCUREMENT
NEXT ASSY	Tensolite HIGH PERFORMANCE CABLES & INTERCONNECT SYSTEMS Long Beach, California 90815		
APPROVAL INITIALS	DATE	TITLE	
DRAWN BY JF	11.08.04	SSMP MALE CATCHERS MITT STRAIGHT SNAP-IN PANEL MOUNT TO LLF1087 CABLE	
CHECKED DNG	11.10.04	SCALE	SUB-DIRECTORY/FILENAME
QUALITY		20:1	OLP_
ENGINEERING SMP	11.10.04	SIZE	CASE CODE
DNG	11.10.04	C 30990	DRAWING NO. P165
		SHEET 1 of 1	REV. -

4

3

2

1