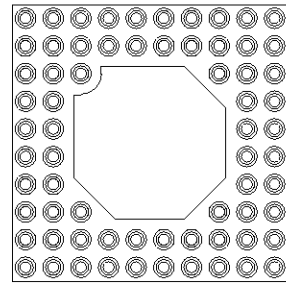


DRAWING NO
C - 345608



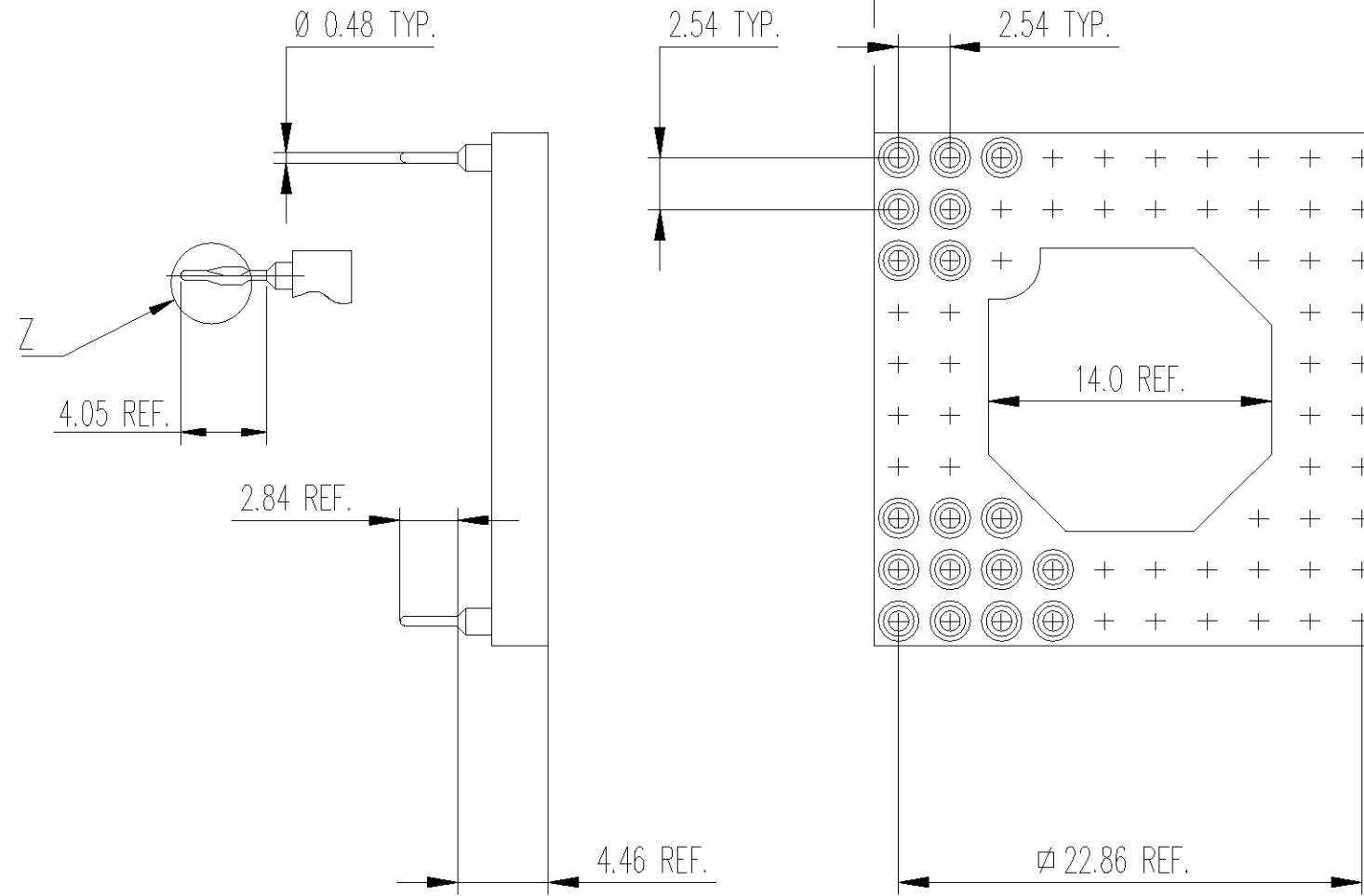
68 POSITIONS
Ech. 1:1

NOTE :

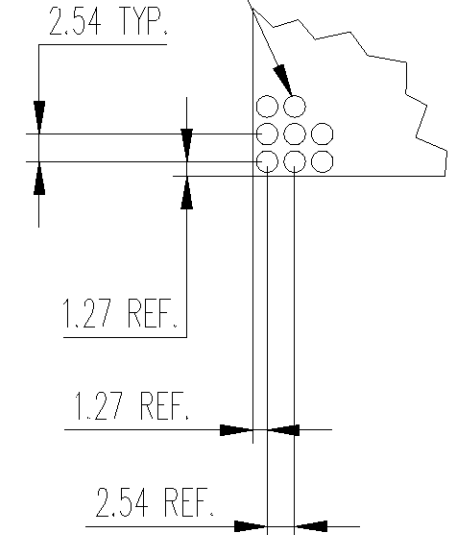
1. MATERIAL
 - INSULATOR : GLASSFILLED THERMOPLASTIC POLYESTER
 - SOLDER TAIL SLEEVE : BRASS
 - PRESS-FIT SLEEVE : PHOSPHOR BRONZE
 - CLIP : STAMPED BERYLLIUM COPPER
2. SLEEVE PLATING:
 - PREFIX "0-" AND "2-": 5µm Sn/Pb OVER 2-3µm Ni
 - PREFIX "1-" AND "3-": 0.25µm Au OVER 2-3µm Ni
 - PREFIX "4-" AND "5-": 3µm Sn/Pb OVER 2-3µm Ni
3. INNER CONTACT PLATING
 - SUFFIX "-1" 0.25µm 18c. Au
 - SUFFIX "-3" 0.75µm 18c. Au
 - SUFFIX "-4" 0.75µm 24c. Au
 - SUFFIX "-5" 5µm MIN. Sn/Pb **
 - SUFFIX "-6" 0.1µm FLASH 24c. Au
 - SUFFIX "-7" 0.70µm 18c. Au
 - ** ONLY WITH PREFIX "0-", "2-", "4-" AND "5-"
4. INNER SPRING CONTACT ACCEPT Ø 0.40 TO 0.56
OR RECTANGULAR PIN 0.25 x 0.45
5. INSERTION CHARACTERISTICS:
 - PREFIX "0-", "1-" AND "4-": VERY LOW FORCE
 - PREFIX "2-", "3-" AND "5-": ULTRA LOW FORCE
6. MECHANICAL DATA WITH A Ø 0.43 TEST PIN :

	VLI	ULI
-MAX. INSERTION FORCE :	0.7N	0.2N
-MIN. EXTRACTION FORCE :	0.1N	0.05N
-MECHANICAL LIFE : 100 CYCLES MIN.		

WAS 700-68-10-0-CC AND CCAP

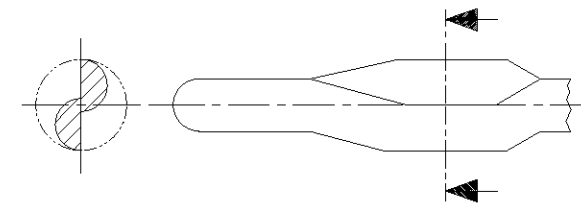


Ø 0.8 TYP.
⊕ Ø 0.10 ⊖



RECOMMENDED P.C.
BOARD PATTERN

PRESS-FIT, DETAIL Z



PREFIX : "4-" AND "5-"
RECOMMENDED PCB FINISHED
HOLE SIZE Ø 0.60 +/-0.05

DIMENSIONS	mm						DRAWN P.-A. MEIER	17 MAR 97	THIS INFORMATION IS CONFIDENTIAL AND IS DISCLOSED TO YOU ON CONDITION THAT NO FUTHER DISCLOSURE IS MADE BY YOU TO OTHER THAN AMP PERSONNEL WITHOUT WRITTEN AUTHORIZATION FROM DSM SWITZERLAND.			
							CHECKED A. BOLIS	18 MAR 97				
SURFACE TEXTURE							APPROVED					
CONCENTRICITY		0.15	B2	DRAWING UPDATED	P.-A. MEIER	14 APR 98	CUSTOMER DRAWING FOR REFERENCE ONLY		NAME OPEN FRAME PGA 10 x 10, 68 SOCKETS			
PRODUCT SPEC.			B1	EW00-0013-97	P.-A. MEIER	17 MAR 97				P.-A. MEIER		
			P	REV	ECN	DRWN	DATE	APVD				
AMP DSM DECOLLETAGE SA SAINT-MAURICE CH 1890 SAINT-MAURICE (VS)							LOC EK	SCALE 2:1	SIZE A4	DRAWING NO C - 345608	SHEET 1 of 1	REVISION B2

**Pin Grid Array-Stecksocket
LIF, ZIF und
gedrehte Kontakte
(Fortsetzung)**

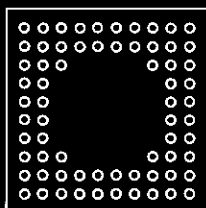
**Pin Grid Array Sockets
LIF, ZIF and Screw-
Machined Contacts
(continued)**

**Rastergröße 10 x 10
(Fortsetzung)**

**Grid Size 10 x 10
(continued)**

**68polig
(symmetrisch)**

**68 Positions
(Symmetrical)**



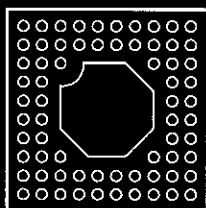
Typ Style	Seite Page	Lötbeinchenlänge Solder Tail Length	Bestell-Nummer Part Number
LIF-P	24-64	2,8	55270-3
LIF-S	24-64	2,8	916220-2
LIF-S	24-64	2,8	916221-7
ZIF	24-67	2,8	55280-3
ZIF	24-67	3,6	1- 55280-1
ZBI	24-67	2,8	55380-2
ZBI	24-67	2,8	55573-6*

* mit Erweiterungen
in einigen Positionen

* has counter bores
in some locations

68polig

68 Positions



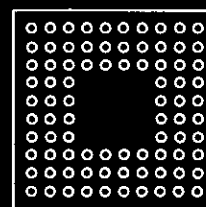
Typ Style	Seite Page	Lötbeinchenlänge Solder Tail Length	Bestell-Nummer Part Number
gedreht/screw-machined	24-70	2,8	345608-1 ... -4

Erläuterungen:

- LIF-P = Low Insertion Force (Premium)
- LIF-S = Low Insertion Force (Standard)
- ZIF = ZIF-Produktion
- ZBI = ZIF-Burn-In
- gedreht = gedrehte Kontakte

**84polig
(symmetrisch)**

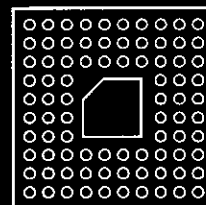
**84 Positions
(Symmetrical)**



Typ Style	Seite Page	Lötbeinchenlänge Solder Tail Length	Bestell-Nummer Part Number
LIF-P	24-64	2,8	55270-2
LIF-S	24-64	2,8	916220-1
ZIF	24-67	2,8	55280-4
ZBI	24-67	2,8	55380-4

84polig

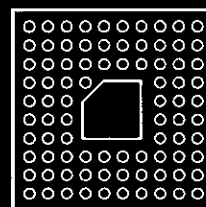
84 Positions



Typ Style	Seite Page	Lötbeinchenlänge Solder Tail Length	Bestell-Nummer Part Number
gedreht/screw-machined	24-70	2,8	345606-1 ... -4

85polig

85 Positions



Typ Style	Seite Page	Lötbeinchenlänge Solder Tail Length	Bestell-Nummer Part Number
gedreht/screw-machined	24-70	2,8	345606-6 ... -9

Legends:

- LIF-P = Low Insertion Force (Premium)
- LIF-S = Low Insertion Force (Standard)
- ZIF = ZIF Production
- ZBI = ZIF Burn-In
- screw-machined = Screw-Machined Contacts

- [Home](#)
- [Part Number Search](#)
- [Document Search](#)
- [Text Search](#)
- [Alternate Part Search](#)
- [Multiple Part Comparison](#)
- [Alphabetical Search](#)
- [Brand Search](#)
- [Industry Product Search](#)
- [Product Type Search](#)
- [Product Family Search](#)
- [Competitor Cross Reference](#)
- [Lead Free Solutions](#)
- [Help/Glossary](#)

Current Brand View	View All Tyco Electronics Brands Click to activate links to all other products
AMP	

Sockets

PGA Sockets

AMP **345608-1** **Active** [Active](#)

(Tyco Electronics P/N: 345608-1)

[Search for Parts](#) | [Previous](#) **[1]** [2](#) [3](#) [4](#) [5](#) [Next](#)

Document links for this part cannot be displayed. Your browser does not support inline frames or is currently configured not to display inline frames. Inline frames are supported in both Internet Explorer 5 and Netscape 6, as well as all later versions of these browsers.

Related Part Information		
General Information	eCommerce	Related Part Information
<input type="checkbox"/> General Info <input type="checkbox"/> Sales Info <input type="checkbox"/> Assembly Subcontractors	<input type="checkbox"/> Pricing <input type="checkbox"/> Product Availability	

Searchable Features:	
Brand:	AMP
Insertion Force:	Very Low
No. of Positions:	68
PCB Mount Style:	Thru Hole
Grid Size:	10x10
Grid Spacing (mm [in]):	Standard: 2.54 x 2.54 [.100 x .100]
Chip Compatibility:	Other
Application:	Production
Frame Style:	Open
Contact Style:	Stamped + Formed
Contact Material:	Beryllium Copper
Packaging Method:	Tube

Other Properties:	
Contact Termination Area Plating:	Tin Lead over Nickel
Housing Color:	Black
Housing Material:	Glass-Filled Thermoplastic Polyester
Housing Flammability Rating:	UL 94V-0
Socket Overall Height (mm [in]):	4.46 [0.176]
Sleeve Plating:	Tin-Lead (200) over nickel
Leg Style:	Standard
Housing Material Temperature:	High

Contact Mating Area Plating:	Gold (10) 18c
Sleeve Material:	Brass
Termination Post Length (mm [in]):	2.84 [0.112]
Heat Sink Attachment:	No
Pick and Place Cover:	None
Socket Identifier:	None
Profile:	Standard

[Copyright](#) and [Privacy Statement](#)

Visit [Tyco International, Ltd.](#)

[Products](#) | [Catalog](#) | [Brands](#) | [Industries](#) | [Commerce](#) | [Supplier](#) | [Customer Service](#) | [About](#) | [Home](#)