

product: DELPHI PN 15409039

material: CUFE2P

surface: F.SN3

material thickness: 0,32 mm

cross section [mm<sup>2</sup>]: 0,5 | 0,75 | 1,0

strip length: 4,00 mm

cable type: FLRY-A

insulation ø [mm]: 1,40 - 2,10

seal:

**Uncontrolled  
Copy  
For Information only!**

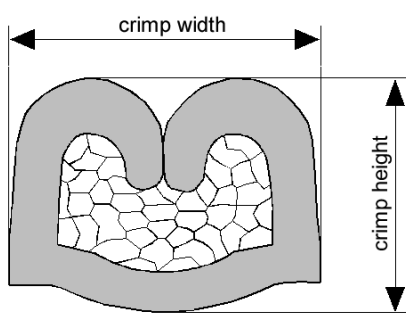
conductor dimension					crimp dimension [mm]					
cable type	cross sect. [mm <sup>2</sup> ]	struct. n x d [mm]	insul. diam. [mm]	tear-out force [N]	core		insulation			
					height ± 0,05	width ± 0,10	height ± 0,10	width ± 0,10	height ± tol.	width ± tol.
FLRY-A	0,5	19 x 0,19	1,50	80	1,30	1,90	2,20	2,60		
FLRY-A	0,75	19 x 0,23	1,80	120	1,40	1,95	2,30	2,60		
FLRY-A	1,0	19 x 0,26	2,00	160	1,50	1,95	2,40	2,60		

core:  
C-1.85-3.0-12  
DPN 10713693

insulation:  
IO-2.50-2.0-10  
DPN 10713879

anvil:

two piece anvil:  
AC-1.85-3.25-B  
DPN 10764220  
AI-2.50-2.8-0.2  
DPN 10764136



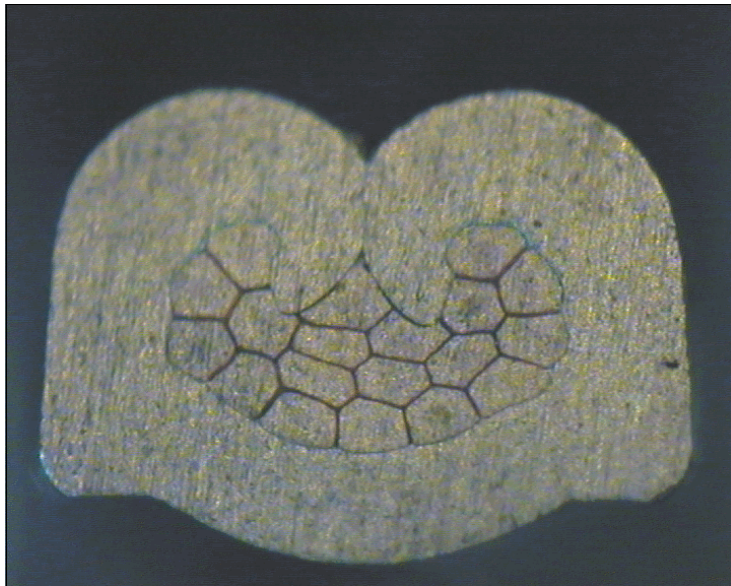
DELPHI PN 15409039



cable:  
 $0,50 \text{ mm}^2 = 19 \times 0,19 \text{ mm}$

crimp height:  
1,30 mm

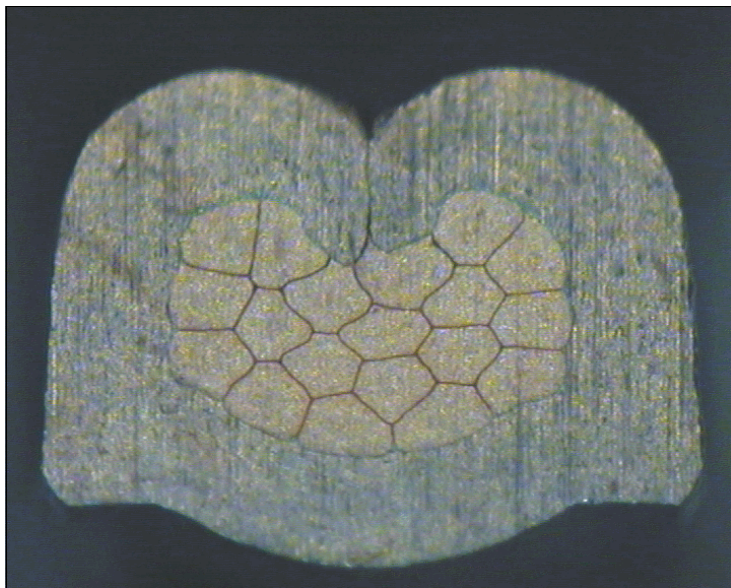
crimp width:  
1,90 mm



cable:  
 $0,75 \text{ mm}^2 = 19 \times 0,23 \text{ mm}$

crimp height:  
1,40 mm

crimp width:  
1,95 mm



cable:  
 $1,00 \text{ mm}^2 = 19 \times 0,26 \text{ mm}$

crimp height:  
1,50 mm

crimp width:  
1,95 mm