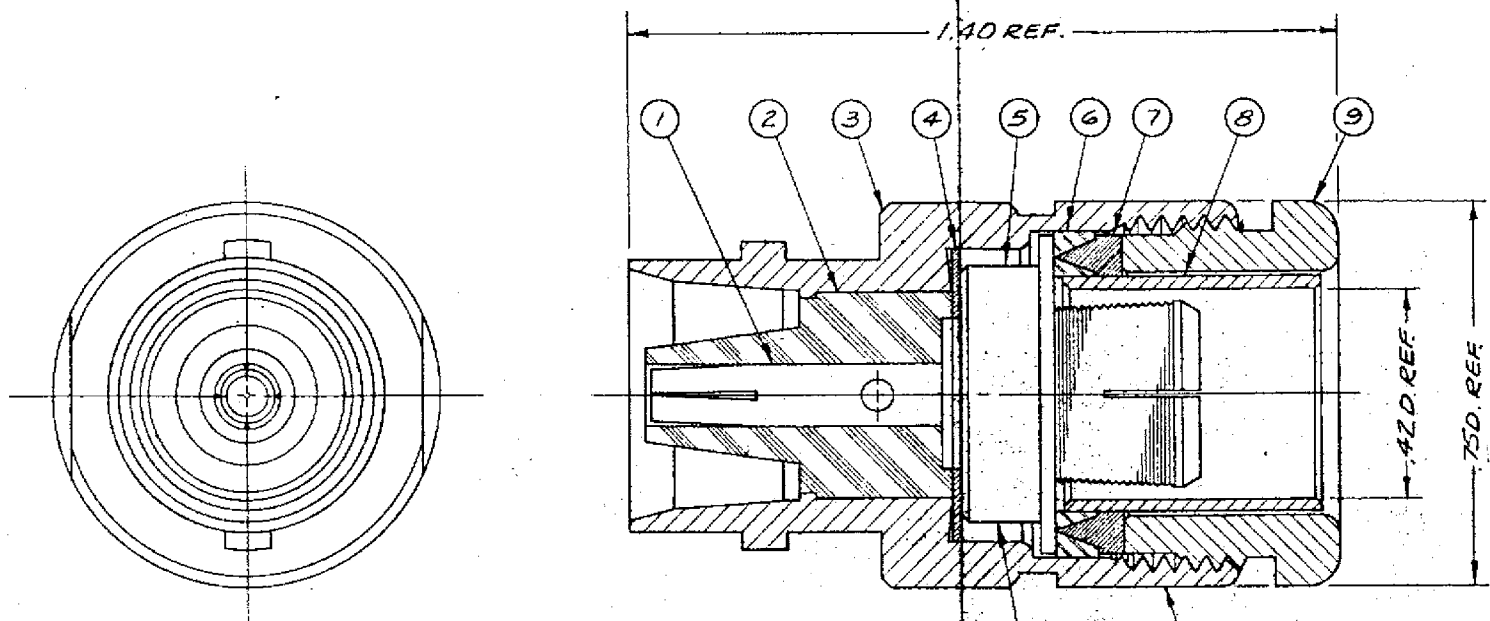


KD-39-08

REVISIONS

ISSUE	CHANGES
1	5-89-36-4 WAS 5-89-04-4, CODE ADDED. 23 FEB 62
2	CN 2900C 13 JAN 65
3	CN 5858A 22 APR 65 H.F.E.
4	CN 13701A W.D. 7 AUG 74
5	CN 15280A JL 17 FEB 76



STAMP: PAT. 3195098

STAMP: KINGS KD-39-08

NOTES:

1. FOR USE WITH RG-8, 11 & 213/U CABLE.
2. FOR CABLING INSTRUCTIONS SEE CP-209A.
3. FOR CABLE TRIMMING USE KTJ-24 & KTD-81.
4. FOR FORMING USE CRIMP DIE SIZE 03.

UNLESS OTHERWISE SPECIFIED:

- | | |
|---|--|
| <ol style="list-style-type: none"> 1. TOLERANCES: FRACTIONS ± .010 DECIMALS ± .004 ANGLES ± 0° 30' T. I. R. CONCENTRICITY OF ANY 2 DIAMETERS MAY NOT EXCEED THE SUM OF THEIR TOLERANCES. | <ol style="list-style-type: none"> 2. REMOVE ALL BURRS. BREAK SHARP EDGES .003 MAX. 3. NO FILLETS PERMITTED. 4. SURFACE ROUGHNESS 100 MICRONS RMS MAX. 5. ALL DIMENSIONS PRIOR TO PLATING. |
|---|--|

9	1	CLAMP NUT	N-59-30-3
8	1	K-GRIP SLEEVE	5-89-04-2
7	1	GLAND	5-89-36-6
6	1	GASKET	571-3
5	1	K-GRIP	5-89-36-1
4	1	WASHER	571-5
3	1	BODY	
2	1	INSULATOR	
1	1	C CONTACT F	1-732-8
ITEM	REQD.	DESCRIPTION	DWG. No.

REF:	
FINISH	
SPEC.	
MATL.	
SPEC.	
C JACK	
DRAWN L1	DATE 18 DEC 61
APPR. PETE	DATE 18 DEC 61
KINGS ELECTRONICS 40 MARLBOROUGH ROAD TUCKAHOE, N. Y.	
KD-39-08	

SD