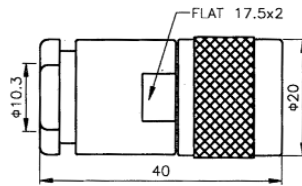


# N CONNECTORS



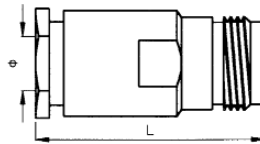
## 2740 SERIES.

### PLUG CLAMP



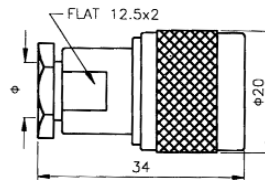
Part Number	Ω	Cable
<b>2740-11541</b>	50	RG-58

### JACK CLAMP



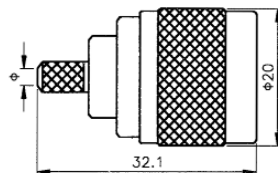
Part Number	Ω	Cable
<b>2740-11542</b>	50	RG-58

### PLUG CLAMP



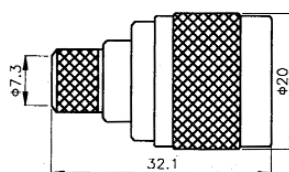
Part Number	Ω	Cable
<b>2740-11543</b>	50	RG-58

### PLUG CRIMP



Part Number	Ω	Cable
<b>2740-21501</b>	50	RG-58
<b>2740-22701</b>	75	RG-59

### PLUG CRIMP



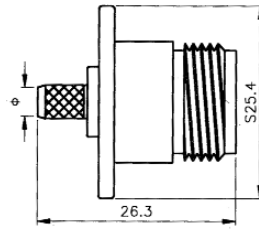
Part Number	Ω	Cable
<b>2740-25502</b>	50	RG-213

# N CONNECTORS



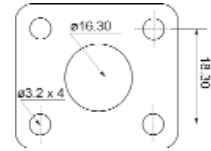
## 2740 SERIES.

### JACK CRIMP PANEL MOUNT

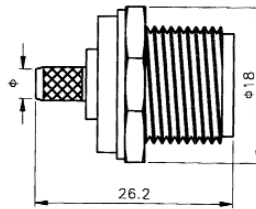


Part Number	$\Omega$	Cable
<b>2740-11503</b>	50	RG-58

RECOMMENDED HOLE PATTERN



### JACK CRIMP

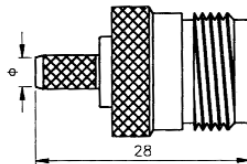


Part Number	$\Omega$	Cable
<b>2740-11504</b>	50	RG-58

RECOMMENDED HOLE PATTERN

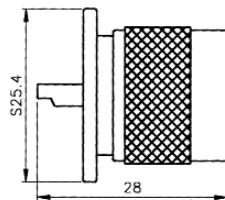


### JACK CRIMP



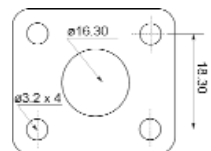
Part Number	$\Omega$	Cable
<b>2740-21505</b>	50	RG-58
<b>2740-22705</b>	75	RG-59
<b>2740-25505</b>	50	RG-213

### PLUG SOLDER PANEL

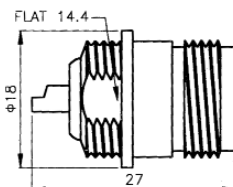


Part Number	$\Omega$
<b>2740-31556</b>	50

RECOMMENDED HOLE PATTERN



### JACK SOLDER BULKHEAD



Part Number	$\Omega$
<b>2740-31557</b>	50

RECOMMENDED HOLE PATTERN

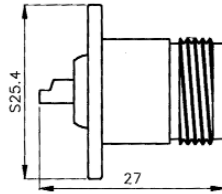


# N CONNECTORS



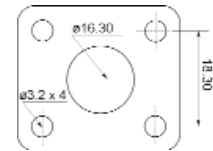
## 2740 SERIES.

### JACK SOLDER PANEL

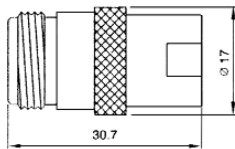


Part Number	Ω
<b>2740-31558</b>	50

RECOMMENDED HOLE PATTERN

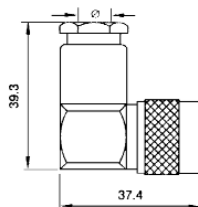


### JACK TWIST ON FOR RG213/U



Part Number	Ω	Cable
<b>2740-35521</b>	50	RG-213

### PLUG RIGHT ANGLE CLAMP



Part Number	Ω	Cable
<b>2740-31545</b>	50	RG-58
<b>2740-35545</b>	50	RG-213