

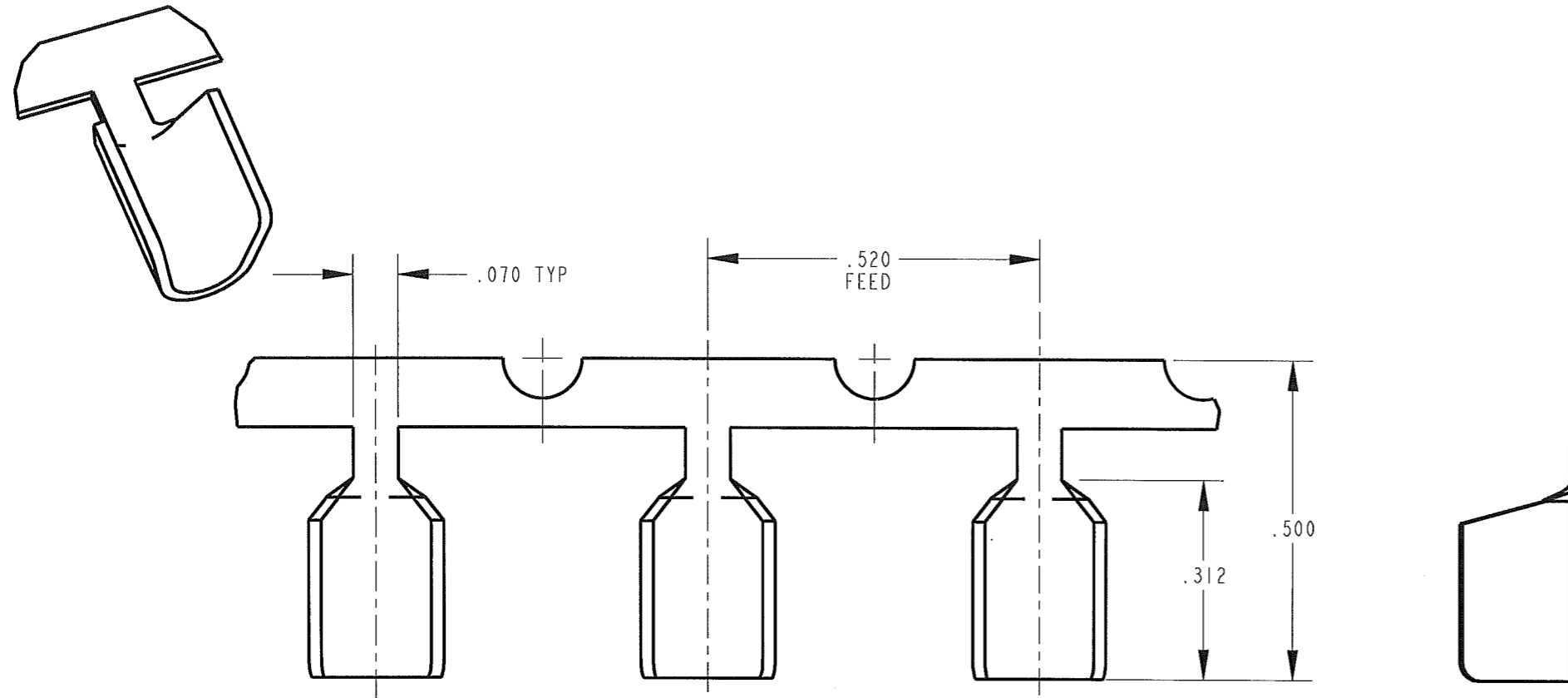
CUSTOMER DRAWING

P/N: 3800S 175/-4

REV

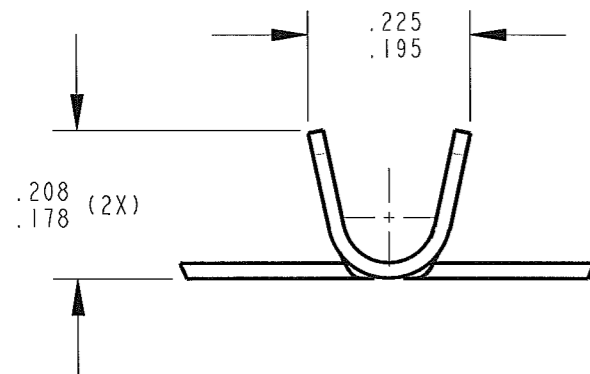
L

PART NUMBER	MATERIAL	FINISH
3800S 175A-4	.020 THICK BRASS	PRETINNED
3800S 175AB-4	.020 THICK BRASS	NONE
3800S 175AD-4	.020 THICK BRASS	POST-TIN
3800S 175J-4	.020 THICK STAINLESS STEEL	NONE

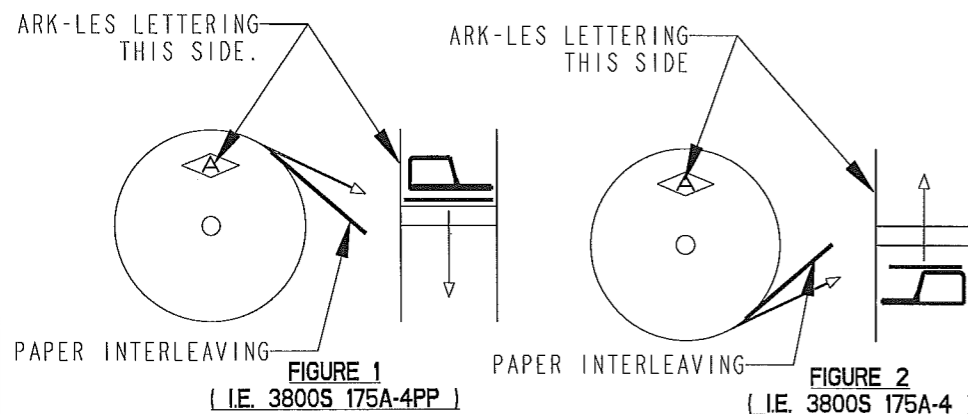


NOTES:

1. CMA RANGE: 3000 TO 6700
2. FOR PIGTAIL SPLICES USED IN A BENCH APPLICATOR, ADD SUFFIX "PP" TO PART NUMBER (i.e. 3800S 175A-4PP), SEE FIGURE 1 FOR REELING.
3. FOR THROUGH SPLICES USED IN A BENCH APPLICATOR, THE PART NUMBER REMAINS THE SAME AS IN THE TABLE (i.e. 3800S 175A-4). SEE FIGURE 2 FOR REELING.
4. FOR PIGTAIL AND THROUGH SPLICES USED IN A SLIM-LINE AIR PRESS, THE PART NUMBER REMAINS THE SAME AS IN THE TABLE (i.e. 3800S 175A-4). SEE FIGURE 2 FOR REELING.
5. PAPER INTERLEAVING ADDED TO REDUCE TANGLING IN REELS.



**ARK-LES  
UNCONTROLLED**



PRINT DIST.	PROD. REL.	SK0678	11/10/1980	CHK'D	TOLERANCES UNLESS OTHERWISE SPECIFIED	 STOUGHTON, MA	
DEPT #	QUOTE REL.			APP.	DECIMALS ± .010		
ENG X	DRAWN BY D. O'NEILL	11/10/06		ET 2.28.09	METRIC ± 0.25mm	ORIGINAL IF RED	
SALES	SUPERSEDES DWG. DATED:	6/9/1997			ANGLES ± 1°	PART NAME CUSTOMER DRAWING SPLICE TERMINAL	
STO X	SCALE 4:1	DO NOT SCALE PRINT				CAD#: 3800S_175-4-REVL_CUST	
DRG	MATERIAL:	SEE TABLE					P/N: 3800S 175/-4
JZ	FINISH:	SEE TABLE					REV L
CHINA							