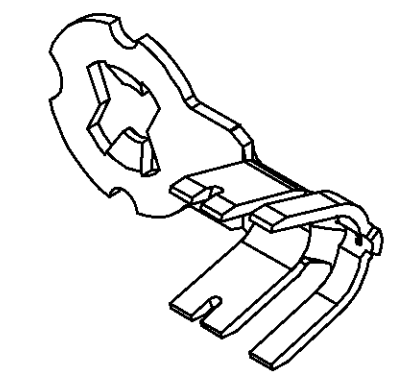
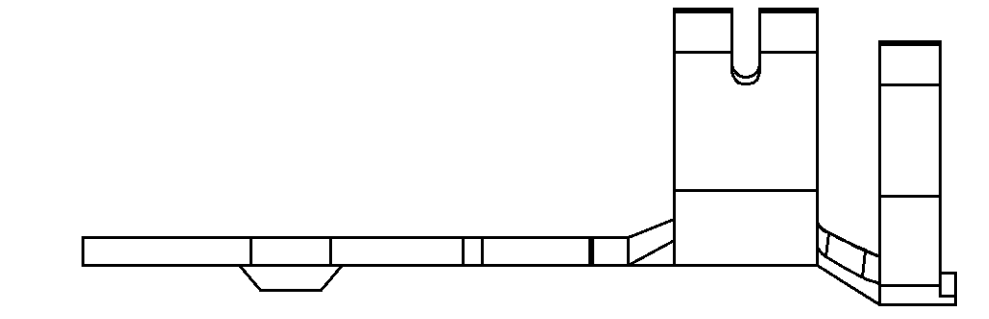
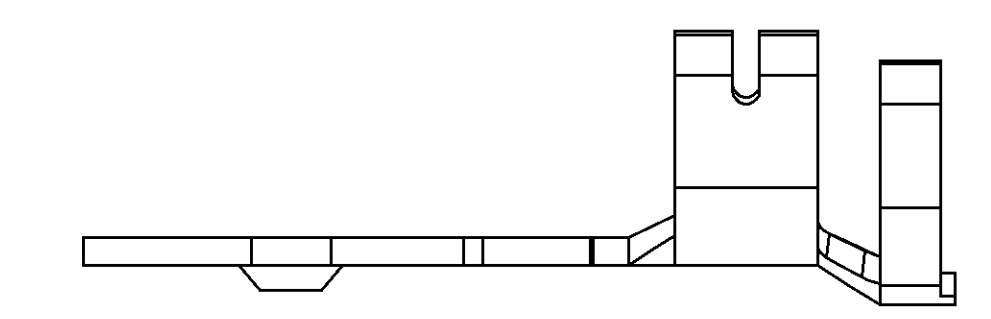
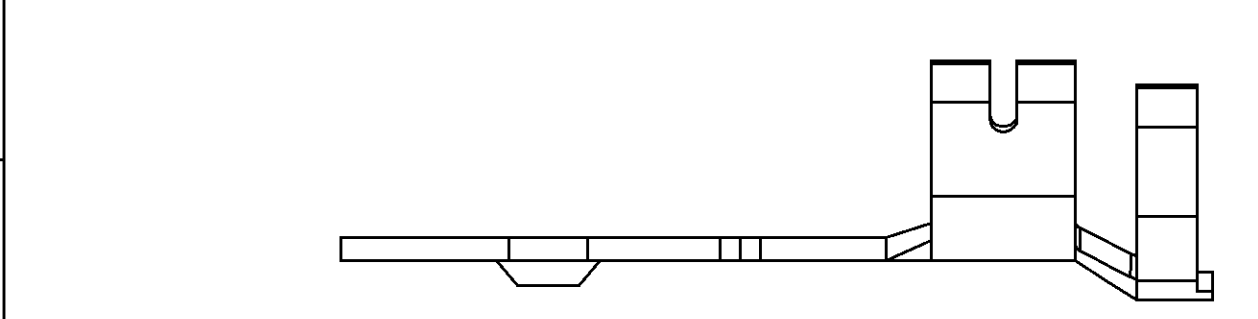
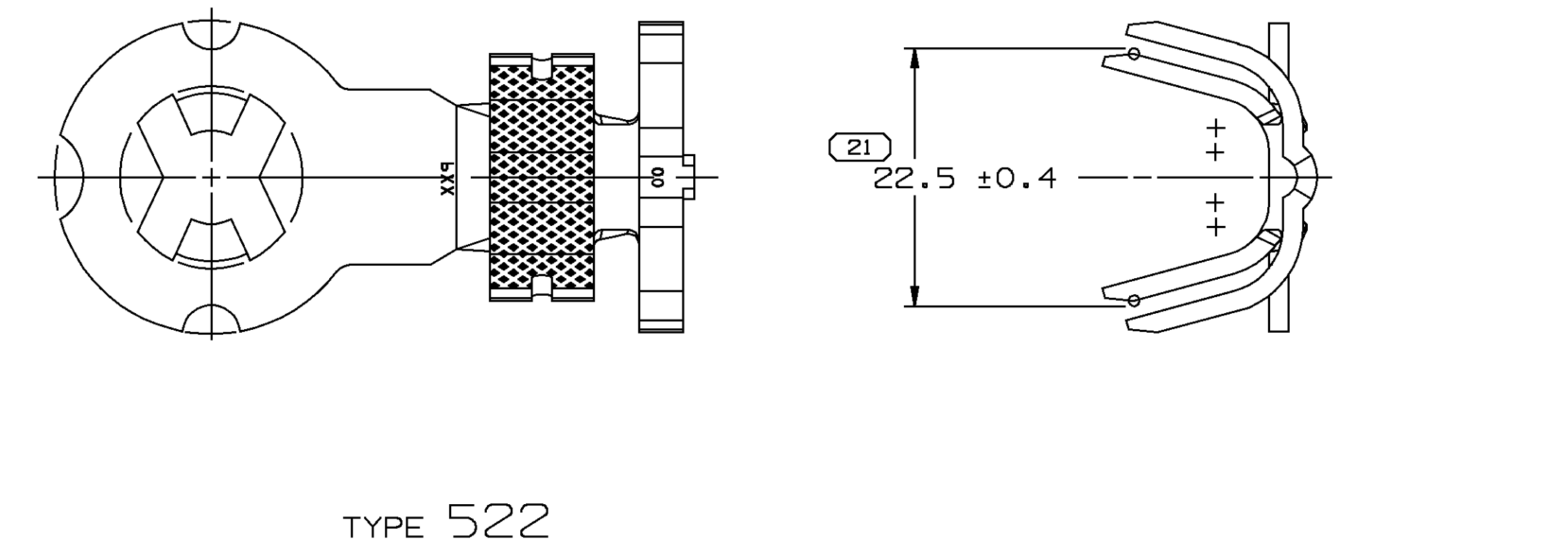
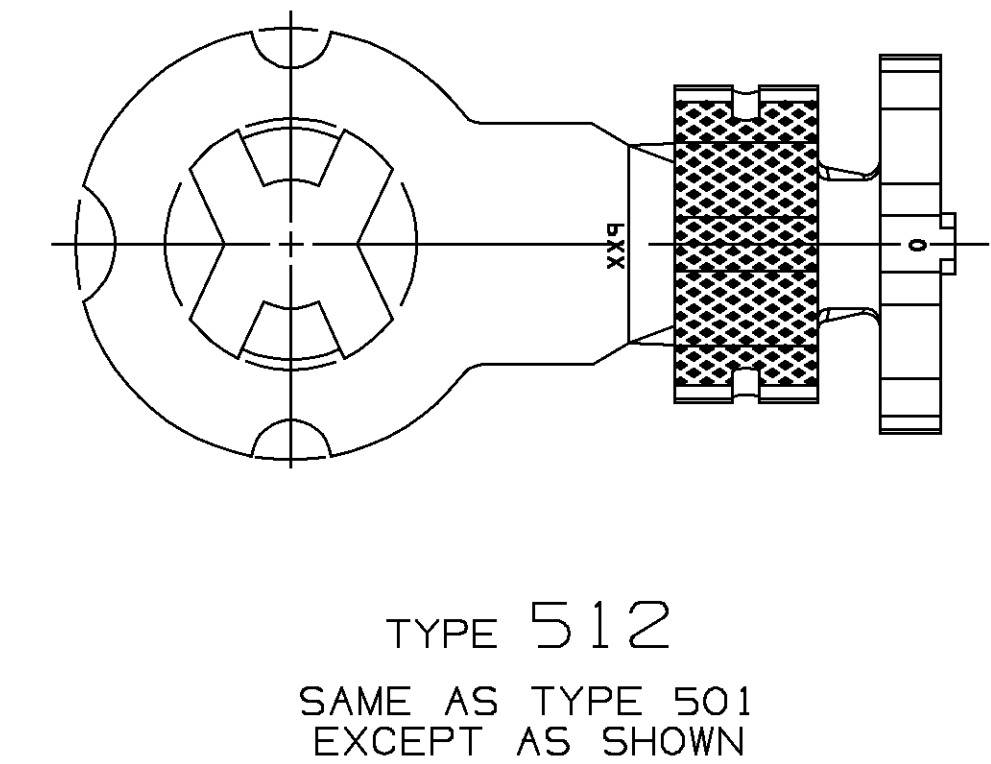
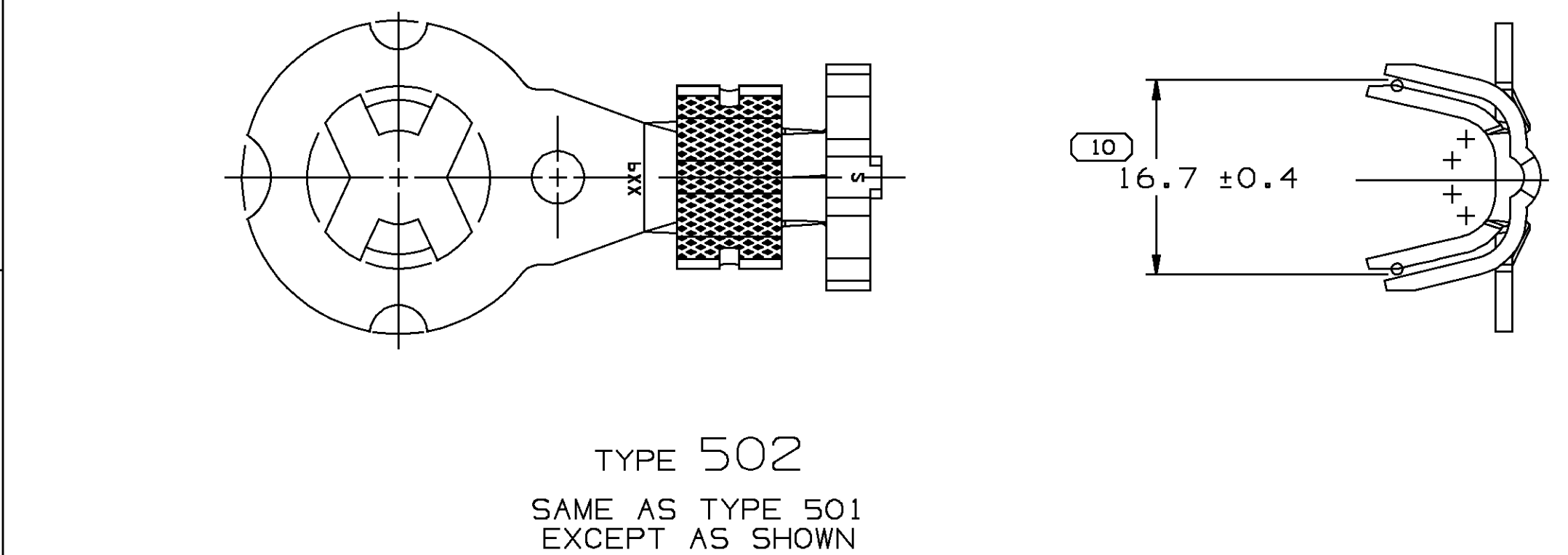
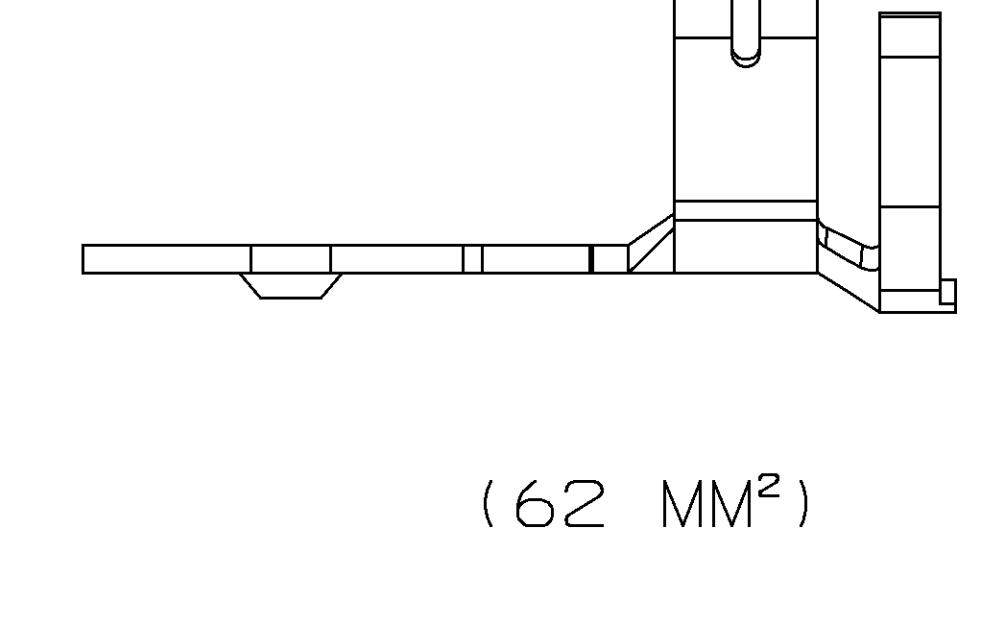
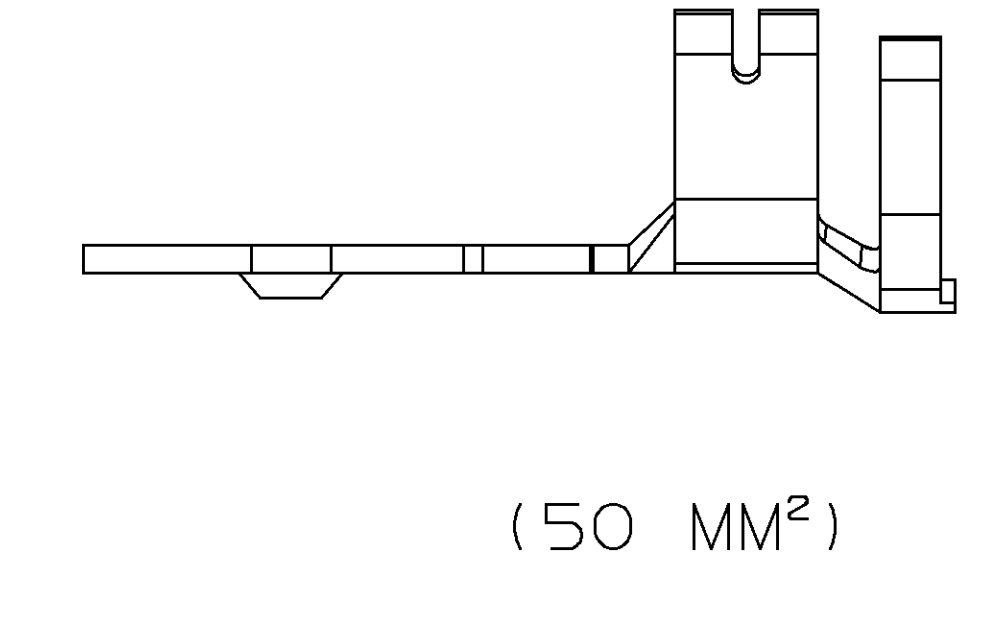
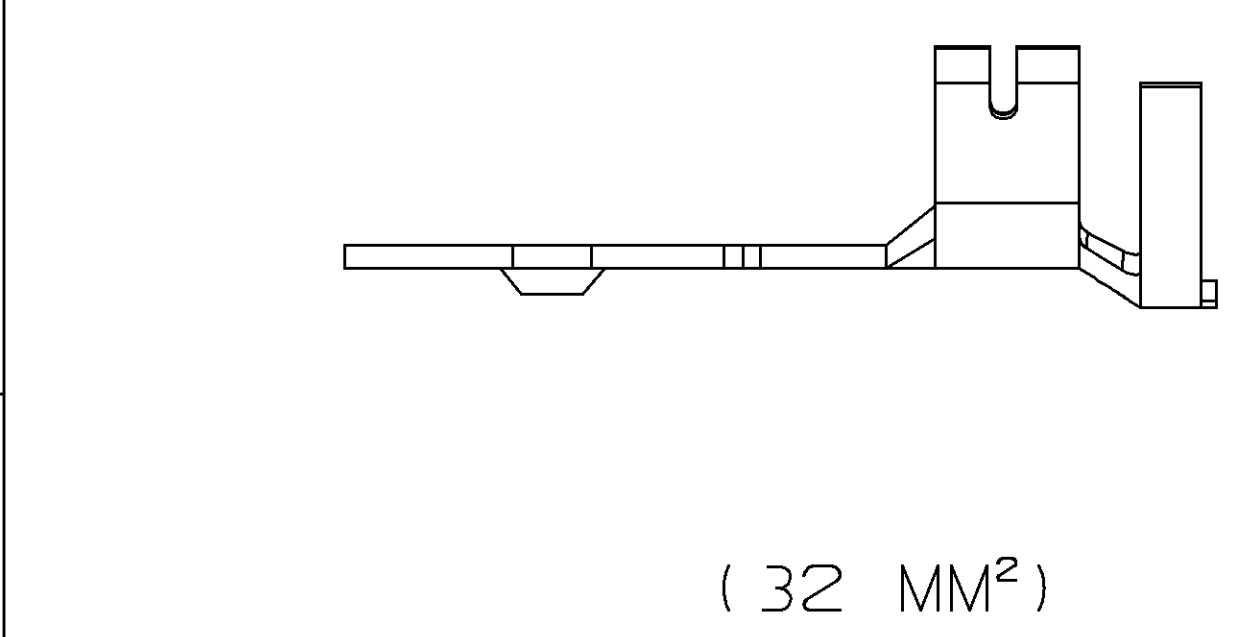
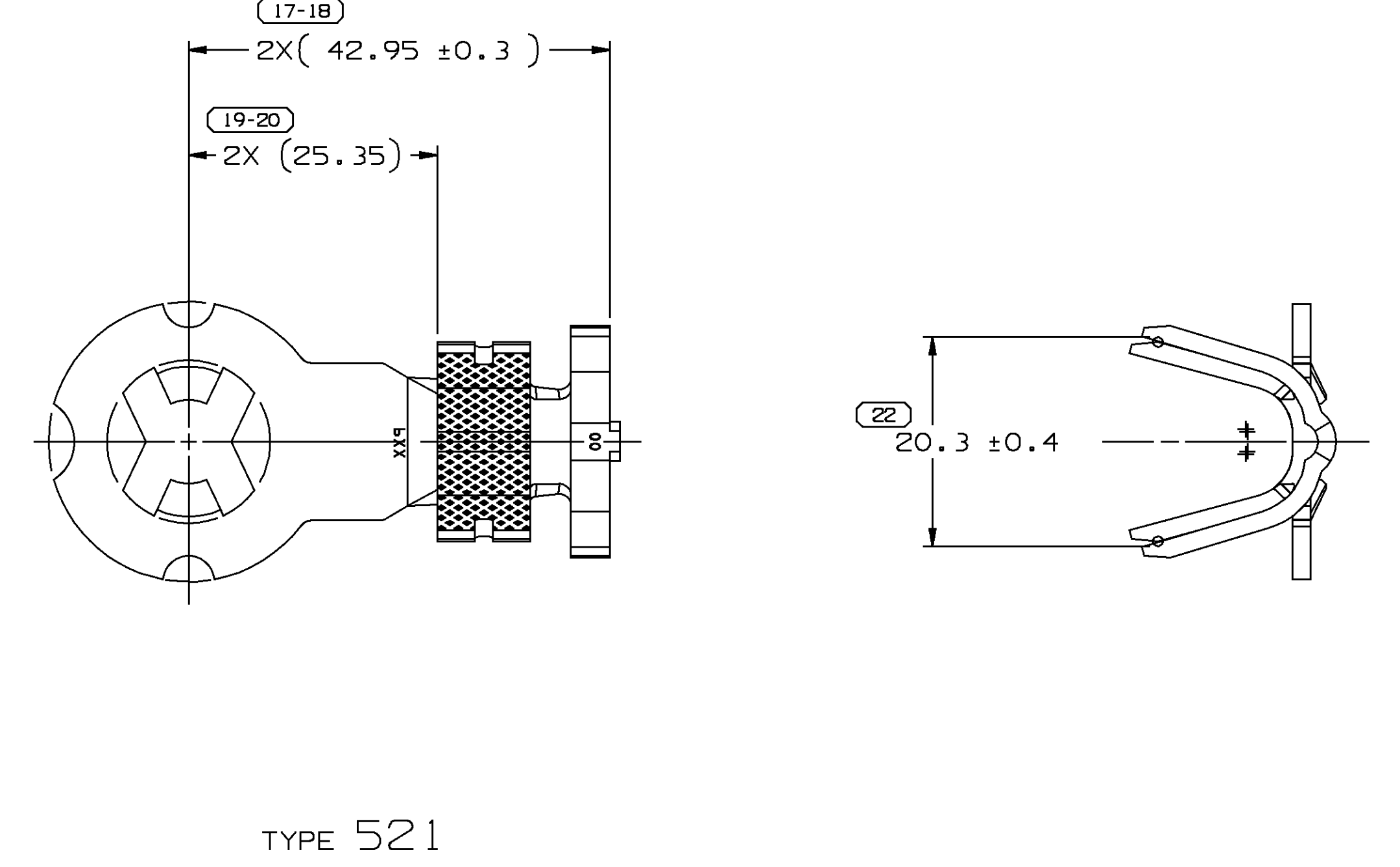
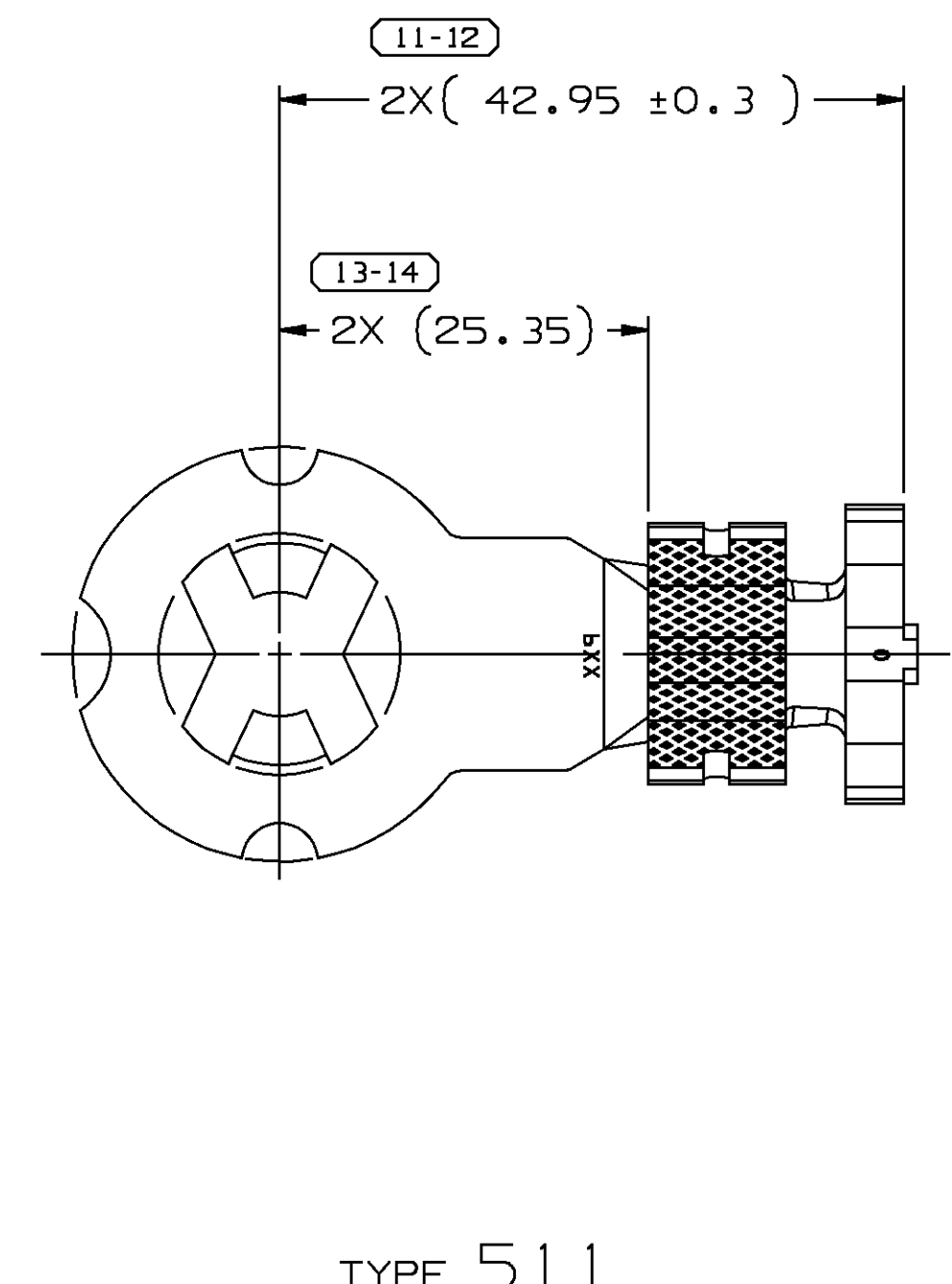
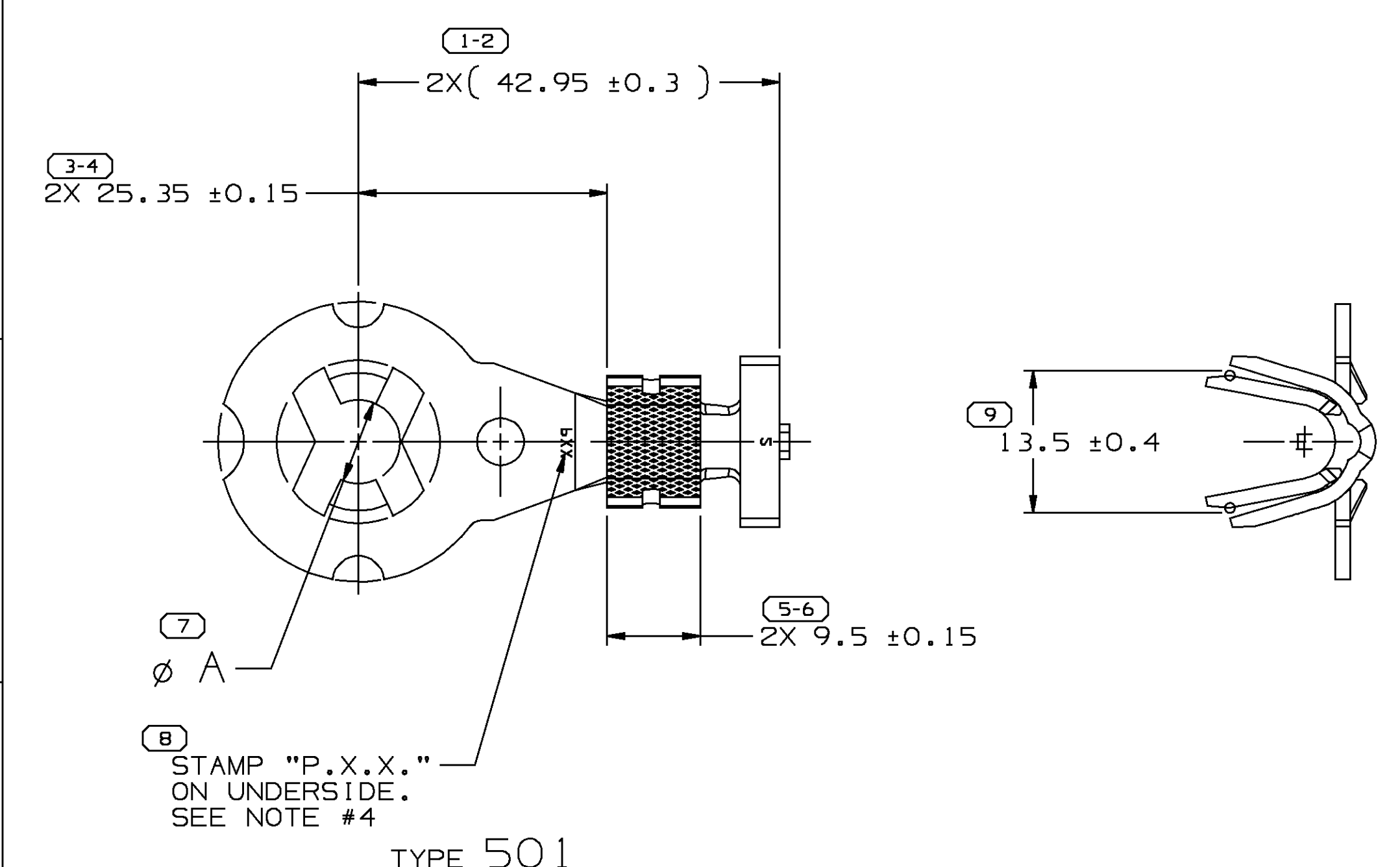


SYMBOL DEFINITION		MISSING NUMBERS		DWG STATUS			REVISION HISTORY			AUTH					
THE NUMBER INSIDE THE SYMBOL CORRESPONDS TO THE NUMBER ON THE INSPECTION REPORT FOR THIS DRAWING/PART NUMBER	TOTAL NO. OF SYMBOLS ON DRAWING	LAST NO. USED	15	22	DATE	STG	REV	CHG	N/P	ZONE	DATE	DR	CK	APVD	
					28AP99	R	001	-	-			193753	JTV	JHV	JF
					25SE99	R	002	-	-			196705	JTV	JVM	JF
					22OC99	R	003	-	-			197410	AAS	MVA	JF



CONSULT ESA-605 FOR CABLE SIZE AND COMBINATIONS USED WITH EACH TERMINAL

NOTES

- UNLESS OTHERWISE SPECIFIED AND/OR INDICATED: DIMENSIONS ARE TO FACE OF VIEW SHOWN AND AUTOMATICALLY ROUNDED BY COMPUTER FOR INSPECTION. (SEE MATH MODEL FOR PRECISE DIMENSIONS.) FOR ALL OTHER DIMENSIONS NOT SHOWN BUT REQUIRED FOR TOOL BUILD, SEE MATH MODEL FOR PRECISE TOOL PATH DATA.
- FOR SOLDERABILITY REQUIREMENTS, SEE ESO-1503.
- FOR ALTERNATIVE CABLE APPLICATIONS, SEE ESA-605.
- "P.X.X." INDICATES "P" PLUS LAST TWO DIGITS OF MAKE DIE SERIES NUMBER. (PO1, PO2 & ETC.)

PART NO	STG	REV	N/P	STATUS	MATERIAL SPECIFICATION AND COLOR	SIZE	SIZE MM²	DIA	GAGE	TYPE	DEDUCT	BARBS
15354967	R	A3			PM001598-174 210 GILDING EX SPR SN PLTD	1.52 X 40.49		32	502	25.35		X
15326134	R	A1			PM001573-229 260 CART BRS 1/2 HD SN PLTD	1.83 X 42.90		50	511	25.35		X
15326133	R	A1			PM001573-174 260 CART BRS 1/2 HD SN PLTD	1.52 X 40.49		32	501	25.35		X
12191287	R	A3			PM001598-229 210 GILDING EX SPR SN PLTD	1.83 X 42.90		50	512	25.35		X
12177187	R	A4			PM001598-182 210 GILDING EX SPR SN PLTD	1.83 X 46.02		62	521	25.35		-
12177185	R	A2			PM001598-229 210 GILDING EX SPR SN PLTD	1.83 X 42.90		50	511	25.35		-
12146466	R	B4			PM001598-174 210 GILDING EX SPR SN PLTD	1.52 X 40.49		32	501	25.35		X
12129465	R	C3			PM001598-229 210 GILDING EX SPR SN PLTD	1.83 X 42.90		50	511	25.35		X
12129221	R	E5			PM001598-182 210 GILDING EX SPR SN PLTD	1.83 X 46.02		62	521	25.35		X

9.9+/-0.13	3/B	M10
A DIA	STANDARD	METRIC
	SCREW/STUD SIZE	

(7) PROCESS SENSITIVE DIMENSION
DIMENSIONS ENCLOSED IN () INDICATE REFERENCE DIMENSIONS AND NO TOLERANCE LIMITS ARE ESTABLISHED

DELPHI Automotive Systems		DIMENSIONAL RANGE (MM) CHART	
MATERIAL SPEC SEE CHART		FROM TO	> 12
		TOLERANCE UNLESS OTHERWISE SPECIFIED	±0.1 ±0.2
		ANGULAR TOLERANCE	± 2°
PART DRAWING			
CODE NUMBER 6900	DWG DATE 10FE92	SCALE 2:1	DISTR CODE D
OC SPEC	STYLE	VOLUME cm³	
PART GEOMETRY 3D SOLID	UNLESS OTHERWISE SPECIFIED: PERFECT FORM REQUIRED FOR FEATURES OF SIZE AT MMC. TRUE POSITION TOLERANCES AND RELATED DATUMS APPLY AT CONDITION OF SIZE INDICATED IN FEATURE CONTROL FRAME. ALL OTHER GEOMETRIC TOLERANCES AND RELATED DATUMS APPLY RFS. SEPARATE TRUE POSITION CALLOUTS MAY BE GAGED SEPARATELY, REGARDLESS OF DATUM REFERENCE.		
COPY OF MATH DATA DO NOT SCALE	REFERENCE 005,705	DR APVD1 J. KENNEDY	DATE 10FE92
		APVD2 J. COLDSNOW	09MR92
METRIC UNLESS OTHERWISE SPECIFIED, ALL DIMENSIONS ARE IN MILLIMETERS		APVD3 T. MORELLO	13MR92
		APVD4	
		APVD5	
THIRD ANGLE PROJECTION	DRAWING NAME TAXI TERM BATT STRIGHT RING		
SHEET NUMBER 5 OF	DRAWING NUMBER 12129597	DWG STATUS R 003	SIZE A0