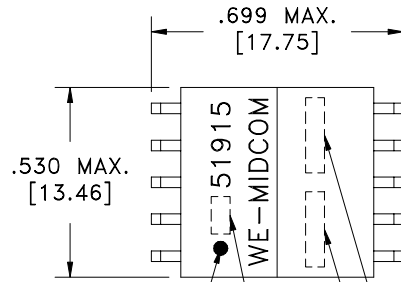
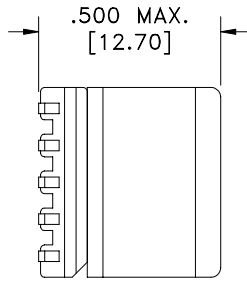
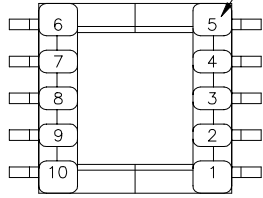


SOLDER SUFFIX	CUSTOMER TERMINAL	RoHS	LEAD(Pb)-FREE
	Sn63%, Pb37%	No	No
LF1	Sn96%, Ag4%	Yes	Yes

6C(6D)

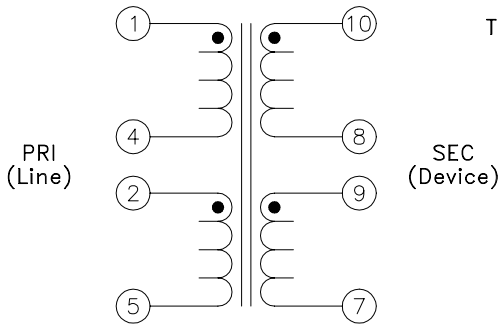
TERM. NO.'s FOR REF. ONLY



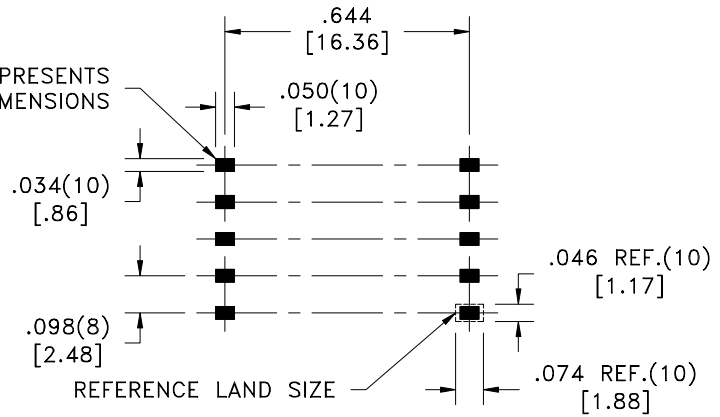
6B

DOT LOCATES TERM. #1
 UL CODE
 LOT CODE & DATE CODE
 SOLDER SUFFIX

6C(6G)



AREA REPRESENTS TERMINAL PAD DIMENSIONS



CUSTOMER TO DETERMINE LAND LAYOUT

ELECTRICAL SPECIFICATIONS @ 25°C unless otherwise noted:

- LONGITUDINAL BALANCE: 40dB min., 30k - 1.1MHz, per ITU Method (L->M).
- D.C. RESISTANCE (@20°C): 1-4, 1.05 ohms ±10%. 10-8, 0.385 ohms ±10%.
2-5, 1.05 ohms ±10%. 9-7, 0.385 ohms ±10%.
- INSERTION LOSS: 0.5dB max., 100kHz, 5.5 ohm load.
- DIELECTRIC RATING: 1500VAC, 1 minute tested by applying 1875VAC for 1 second between 1-10(tie 2+4, 8+9).
- INDUCTANCE: 3mH ±10%, 10kHz, 100mVAC, 1-5(tie 2+4), Ls.
- LEAKAGE INDUCTANCE: 53uH max., 10kHz, 100mVAC, 1-5(tie 2+4, 7+9, 8+10), Ls.
- TURNS RATIO: (1-5):(9-7) = 4.25:1, tie(2+4), ±2%.
(1-5):(10-8) = 4.25:1, tie(2+4), ±2%.
(10-8):(9-7) = 1:1, ±2%.
- TOTAL HARMONIC DISTORTION: -74dB max., 10kHz, 2.5Vrms across PRI, 5.5 ohm load, 100 ohm input, tie(2+4).
- INTERWINDING CAPACITANCE: 20pF max., 100kHz, 100mVAC, 1-9(tie 2+4, 1+5, 7+9, 8+10), Cs.
- OPERATING TEMPERATURE RANGE: -40°C to +85°C.
- Midcom p/n 51915R-LF1 is eiSos p/n: 750051915.

6F Designed to comply with the following requirements as defined by IEC60950-1, EN60950-1, UL60950-1/CSA60950-1 and AS/NZS60950.1:
 - Supplementary insulation for a primary circuit at a working voltage of 250Vrms.

DETAILS SUBJECT TO CHANGE

6G AGENCY NUMBER	
UL CODE	AE
FILE# E205930	

Unless otherwise specified:
 Tolerances:
 Angles: ±1°
 Fractions: ±1/64
 Decimals: ±.005[.13]

DRAWING TITLE

TRANSFORMER

eiSos p/n: 750051915



DRAWING NO.

51915R/-LF1

6C

REV.

6G
4/07

REVISIONS: SEE SHEET 1

SCALE ---

SHEET 2 OF 7

DWG # 51915R/-LF1

This drawing is dual dimensioned.
 Dimensions in brackets are in millimeters.